



NORANDEX™

EXTERIOR PRODUCTS FOR YOUR HOME

*See NEW Premium
Stainless Steel Micro
Mesh Gutter Screen
Pg 24*

**RAINWARE, TRIM COIL
& SIDING ACCESSORIES**

Lodi Plant

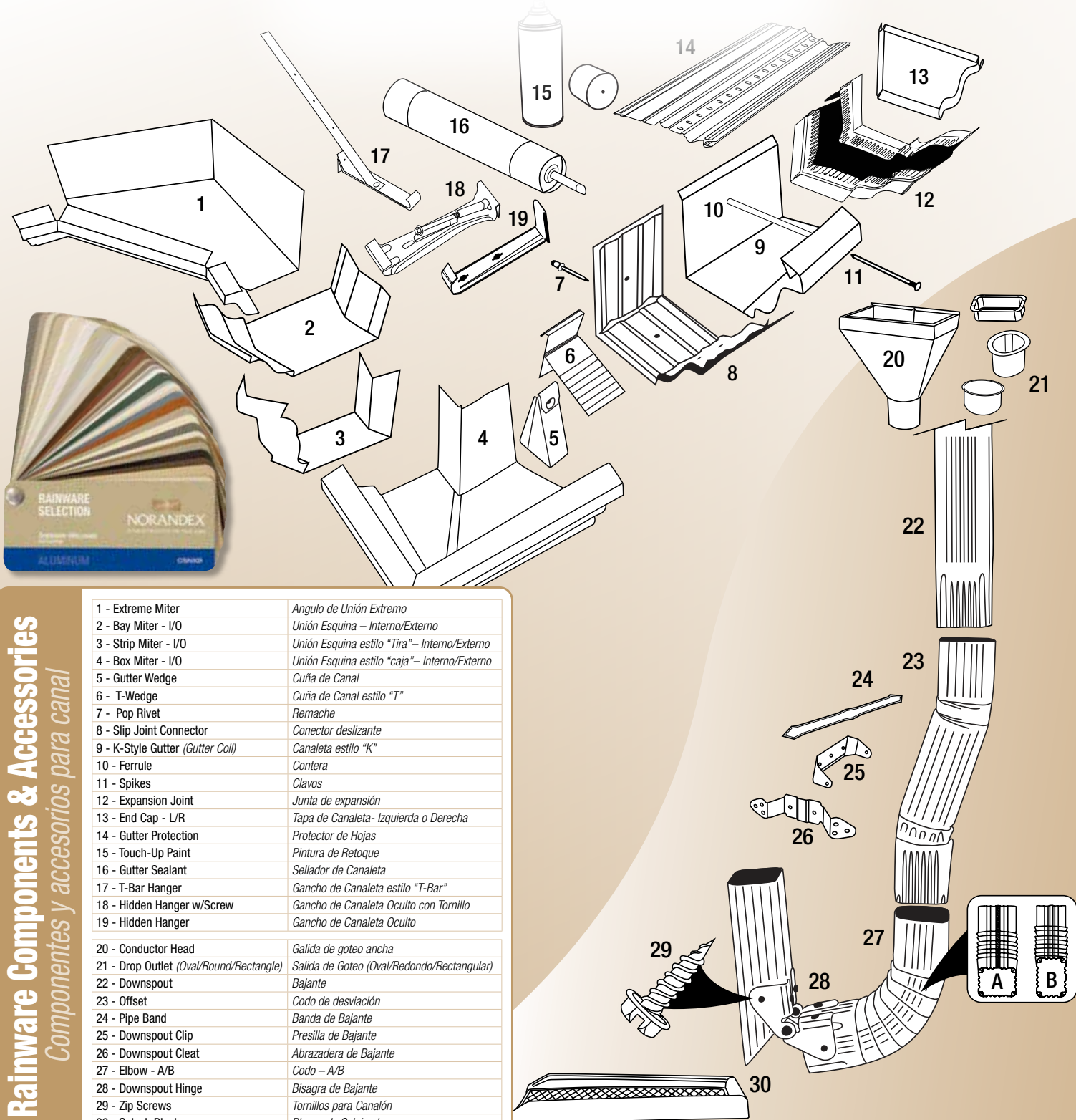
www.acm-metals.com

Rainware Components & Accessories



NORANDEX™

EXTERIOR PRODUCTS FOR YOUR HOME



Rainware Components & Accessories

Componentes y accesorios para canal

1 - Extreme Miter	Angulo de Unión Extremo
2 - Bay Miter - I/O	Unión Esquina - Interno/Externo
3 - Strip Miter - I/O	Unión Esquina estilo "Tira" - Interno/Externo
4 - Box Miter - I/O	Unión Esquina estilo "caja" - Interno/Externo
5 - Gutter Wedge	Cuña de Canal
6 - T-Wedge	Cuña de Canal estilo "T"
7 - Pop Rivet	Remache
8 - Slip Joint Connector	Conector deslizante
9 - K-Style Gutter (Gutter Coil)	Canaleta estilo "K"
10 - Ferrule	Contera
11 - Spikes	Clavos
12 - Expansion Joint	Junta de expansión
13 - End Cap - L/R	Tapa de Canaleta - Izquierda o Derecha
14 - Gutter Protection	Protector de Hojas
15 - Touch-Up Paint	Pintura de Retoque
16 - Gutter Sealant	Sellador de Canaleta
17 - T-Bar Hanger	Gancho de Canaleta estilo "T-Bar"
18 - Hidden Hanger w/Screw	Gancho de Canaleta Oculto con Tornillo
19 - Hidden Hanger	Gancho de Canaleta Oculto
20 - Conductor Head	Galida de goteo ancha
21 - Drop Outlet (Oval/Round/Rectangle)	Salida de Goteo (Oval/Redondo/Rectangular)
22 - Downspout	Bajante
23 - Offset	Codo de desviación
24 - Pipe Band	Banda de Bajante
25 - Downspout Clip	Presilla de Bajante
26 - Downspout Cleat	Abrazadera de Bajante
27 - Elbow - A/B	Codo - A/B
28 - Downspout Hinge	Bisagra de Bajante
29 - Zip Screws	Tornillos para Canalón
30 - Splash Block	Bloque de Salpicaduras



Table of Contents

Gutter Coil Conversion Chart 2

Gutter Coil 3

Spin Down Gutter Coil 4

Gutters 5-6

End Cap Reference Chart 7

Downspouts 8

Elbows 9

 A & B Elbows 9

 Variable Degree Elbows 9

Offsets 10

Downspout Accessories..... 11-12

 Leader Heads 11

 Outlets 11

 Wire Strainers 11

 Drain Tile Adapter 11

Y Adapters 11

 Y Diverters 11

 Funnels 12

 Leader Straps 12

 Pipe Bands/Clips/Cleats 12

 Downspout Hinges 12

 Splash Blocks 12

Miters 13

 Extreme™ Miters 13

 Box Miters 13

 Bay Miters 13

 Strip Miters 13

Joints 14

 Expansion Joints 14

 Slip Joints 14

End Caps 15

Hangers..... 16-17

 Hidden 16

 Hangers with Screws 16

 T-Wedge Hangers 17

 Gutter Wedges 17

 Wrap Around 17

 T-Bar 17

 Hanger Straps 17

Rainware Accessories..... 18

 Ring Shanks 18

 Ferrules 18

Round/Half-Round Products 19-22

 Half-Round Gutters 19

 Round Downspouts 19

 Round Elbows 20

 Round Offsets 20

 Round Leader Heads 20

 Round Leaders Straps 21

 Round & Half Round Outlets 21

 Half-Round Miters 21

 Half-Round End Caps 21

 Half-Round Hidden Hangers 22

 Half-Round Brackets 22

Copper Products..... 23

Gutter Protection..... 24-26

 Drain Guard 24

 Gutter Protection Screen Systems 24-25

 Gutter Protection Perforated 25

 & Cover Systems

 Gutter Protection & Accessories 26

Soffit and F-Channel & J-Channel 27

 Hidden Vent Soffit 27

 F-Channel 27

 J-Channel 27

Warranties 28-30

Norandex™ Rainware Color Swatches 33

PROUDLY FINISHED WITH

SHERWIN-WILLIAMS.

Coil Coatings

To place orders for metal products, please call:

Lodi Plant Customer Service: **Ph 877-213-5962 • Fax 608-362-0599**

www.acm-metals.com

For siding and window inquiries, please call Norandex™ Corporate Customer Service at **800-528-0942**



Gutter Coil Conversion Factors

(Determining Feet to Weight)

Coil Width	Material Thickness	Conversion Multiplier Formula	
11-3/4"	.027" Alum.	lin. ft. _____	X .377 = _____ # lbs.
11-7/8"	.027" Alum.	lin. ft. _____	X .380 = _____ # lbs.
14"	.027" Alum.	lin. ft. _____	X .453 = _____ # lbs.
15"	.027" Alum.	lin. ft. _____	X .476 = _____ # lbs.
11-3/4"	.032" Alum.	lin. ft. _____	X .446 = _____ # lbs.
11-7/8"	.032" Alum.	lin. ft. _____	X .450 = _____ # lbs.
13"	.032" Alum.	lin. ft. _____	X .500 = _____ # lbs.
15"	.032" Alum.	lin. ft. _____	X .571 = _____ # lbs.
18"	.032" Alum.	lin. ft. _____	X .678 = _____ # lbs.
11-7/8"	26 ga. Steel	lin. ft. _____	X .768 = _____ # lbs.
12"	26 ga. Steel	lin. ft. _____	X .775 = _____ # lbs.
13"	26 ga. Steel	lin. ft. _____	X .839 = _____ # lbs.
14"	26 ga. Steel	lin. ft. _____	X .904 = _____ # lbs.
15"	26 ga. Steel	lin. ft. _____	X .969 = _____ # lbs.
19"	26 ga. Steel	lin. ft. _____	X 1.23 = _____ # lbs.
11-7/8"	16 oz. Copper	lin. ft. _____	X 0.99 = _____ # lbs.
15"	16 oz. Copper	lin. ft. _____	X 1.25 = _____ # lbs.

To process an order for a spin down quantity, determine the number of pounds based on the requested footage by the contractor. Enter the number of pounds on the ticket noting the required footage. After spinning down the required coil footage, re-weigh the coil to verify the actual pounds of coil taken out of inventory. Note the actual weight in shipped column of the ticket. Update the tickets to adjust the invoice accordingly. This process ensures proper invoicing and accurate inventory levels.

These coils are cut from master coils which are slightly thicker in the middle to avoid oil canning during the painting process. The gauge can vary slightly depending on where the coil was cut from the master coil. Inventory will vary if the product is sold by footage and not weight. Remember, product is purchased by the pound. Re-weighing is necessary for accuracy.

A NOTE ABOUT COLOR SELECTION

NORANDEX™ provides color chip cards which show a close representation of the color. The purpose of color chip cards is to narrow down the homeowner choice of colors. Depending upon the substrate, the final selection should always be based on either an aluminum or steel color tile fan deck, viewed in full sunlight.

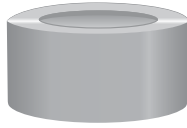
Metallic colors, such as Copper Penny (CP), Bronze (BZ), Rustic Copper (M2), and Weathered Bronze (WB), have mica (refractive) or aluminum (reflective) flakes added to the paint finish. The color of different products may be the same (as measured on a colorimeter), but the visual appearance may look slightly different when viewed from different angles and varying amount of sunlight. This is a normal occurring phenomenon and is due the chance positioning of the mica and aluminum flakes when added to the paint finish.



NORANDEX™ Gutter Coil

LODI PLANT

Gutter Coil



Part #	Description	Colors	Nom. Gauge/ Thickness	Pieces/ Pound
*AGC21178 - -	Alum. 11-7/8" Coil	CP, FR, LN, MS, SS, SI, WH	0.027	350 Lbs.
*AGC21178M2	Alum. 11-7/8" Coil	M2 (Premium Color)	0.027	350 Lbs.
AGC278 - - - -	Alum. 11-7/8" Coil	30/30, 50/80, 80/RB, AL/WI, BB/BZ, BU/NW, CC/CA, DS/VG, EG/WH, HC/LI, HG/CG, MR/SP, PC/ST, PH/WH, RB/HV, RB/MB, RS/DM, RW/BK, S7/WH, TA/CU, TB/BB, WB/HV, WB/MB, WH/HV, WT/CA	0.027	350 Lbs.
AGC214WH	Alum. 14" Coil	WH	0.027	375 Lbs.
AGC214 - - - -	Alum. 14" Coil	50/80, BB/BZ, DS/VG, EG/WH, HC/LI, HG/CG, PC/ST, RB/MB, RB/HV, RW/BK, WB/MB	0.027	375 Lbs.
*AGC215 - -	Alum. 15" Coil	AD, CP, FR, LN, MS, SS, SI, WH	0.027	375 Lbs.
*AGC215M2	Alum. 15" Coil	M2 (Premium Color)	0.027	375 Lbs.
AGC215 - - - -	Alum. 15" Coil	50/80, 80/RB, AL/WI, BB/BZ, BU/NW, CC/CA, DS/VG, EG/WH, HC/LI, HG/CG, MR/SP, PC/ST, PH/WH, RB/HV, RB/MB, RS/DM, RW/BK, S7/WH, TA/CU, TB/BB, WB/HV, WB/MB, WH/HV, WT/CA	0.027	375 Lbs.
AGC31178 - -	Alum. 11-7/8" Coil	BK, BZ, HV, MS, WH	0.032	350 Lbs.
AGC315 - -	Alum. 15" Coil	BK, BZ, CA, CG, HV, LI, MB, TB, WH	0.032	375 Lbs.
GGC612 - - - -	Galv. 12" Coil	BB/WH, CC/WH, CG/HG, DS/WH, EG/WH, HV/WH, PC/WH, RB/WH, RW/BK, VG/WH, WI/WH	26 ga	1,000 Lbs.
GGC613 - - - -	Galv. 13" Coil	BB/WH, CC/WH, CG/HG, DS/WH, HV/WH, PC/WH, RB/WH, RW/BK, VG/WH	26 ga	1,000 Lbs.
GGC614RBWH	Galv. 14" Coil	RB/WH	26 ga	400 Lbs.
GGC154PR	Galv. 15" Coil	Prime	26 ga	400 Lbs.
GGC154HVWH	Galv. 15" Coil	HV/WH	26 ga	400 Lbs.
GGC615WH	Galv. 15" Coil	WH	26 ga	1,000 Lbs.
GGC615 - - - -	Galv. 15" Coil	BB/WH, CC/WH, CG/HG, DS/WH, EG/WH, HV/WH, PC/WH, RB/WH, RW/BK, TA/CU, VG/WH, WI/WH	26 ga	1,000 Lbs.
GGC619WH	Galv. 19" Coil	WH	26 ga	1,000 Lbs.
GGC619 - - - -	Galv. 19" Coil	BB/WH, CC/WH, CG/HG, DS/WH, EG/WH, HV/WH, PC/WH, RB/WH, RW/BK, TA/CU, VG/WH, WI/WH	26 ga	1,000 Lbs.
GGC6E5 - - - -	Galv. 15" Coil "E" Grade	BB/WH, CC/WH, CG/HG, DS/WH, EG/WH, HV/WH, PC/WH, RB/WH, RW/BK, TA/CU, VG/WH, WH/WH, WI/WH	26 ga	1,000 Lbs.
GGC6E9 - - - -	Galv. 19" Coil "E" Grade	BB/WH, CC/WH, CG/HG, DS/WH, EG/WH, HV/WH, PC/WH, RB/WH, RW/BK, TA/CU, VG/WH, WH/WH, WI/WH	26 ga	1,000 Lbs.
PGC261178	Bond. 11-7/8" Coil	Bond.	26 ga	400 Lbs.
PGC2615	Bond. 15" Coil	Bond.	26 ga	400 Lbs.

***NOTE:** One week extended lead-time for these gutter coil colors.

Note: .032 aluminum thickness also available with additional lead-time and potential freight charges. Consult your customer service rep for color and coil width availability.

Rainware & Accessories Colors:

COLOR	CODE	COLOR	CODE	COLOR	CODE	COLOR	CODE	COLOR	CODE
NX ALMOND	AD	COPPER PENNY	CP	HERITAGE CREAM	HC	REDWOOD	RW*	TAHOE BLUE	TA*
ALMOND	AL	COUNTRY BLUE	CU*	NX LINEN	LN	ROSEWOOD	RS	TERRA BRONZE	TB
BEAVER BROWN	BB*	DESERT MAUVE	DM	LINEN	LI	ROYAL BROWN	RB*	VICTORIAN GREY	VG*
BLACK	BK*	DESERT SAND	DS*	MARINE GREEN	MR	RUSTIC COPPER	M2**	WEATHERED BRONZE	WB
BRONZE	BZ	EVERGREEN	EG*	MONTANA SUEDE	MS	NX SAND STONE	SS	WHEAT	WT
BUCKSKIN	BU	FROST	FR	MUSKET BROWN	MB	SANDTONE	ST	WICKER	WI*
CAMEO	CA	HARBOR GREY	HG*	NORWEGIAN WOOD	NW	SEA BLUE	S7	30 WHITE	WH*
CHARCOAL GREY	CG*	HARVEST BROWN	HV*	PEBBLESTONE CLAY	PC*	NX SIERRA	SI	50 WHITE	50
CLASSIC CREAM	CC*			PEACH	PH	SPANISH GREEN	SP	80 WHITE	80

***Available in STEEL**

****Rustic Copper is a PREMIUM color. NOTE:** Rustic Copper (M2) accessories, including miters and end caps, may display paint finish variations due to the metallic painting process, which may affect matching components.



NORANDEX™ Gutter Coil

LODI PLANT

Spin Down Gutter Coil



Part #	Description	Colors	Nom. Gauge/ Thickness	Pieces/ Pound
* ASC21178 - -	Alum. 11-7/8" Coil	CP, FR, LN, SS, SI, WH	0.027	Order by the lb.
* ASC21178M2	Alum. 11-7/8" Coil	M2 (Premium Color)	0.027	Order by the lb.
ASC278 - - - -	Alum. 11-7/8" Coil	30/30, 50/80, 80/RB, AL/WI, BB/BZ, BU/NW, CC/CA, DS/VG, EG/WH, HC/LI, HG/CG, MR/SP, PC/ST, PH/WH, RB/HV, RB/MB, RS/DM, RW/BK, S7/WH, TA/CU, TB/BB, WB/HV, WB/MB, WH/HV, WT/CA	0.027	Order by the lb.
ASC214WH	Alum. 14" Coil	WH	0.027	Order by the lb.
AGC214 - - - -	Alum. 14" Coil	50/80, BB/BZ, DS/VG, EG/WH, HC/LI, HG/CG, PC/ST, RB/HV, RB/MB, RW/BK, WB/MB	0.027	375 Lbs.
* ASC215 - -	Alum. 15" Coil	AD, CP, FR, LN, SS, SI, WH	0.027	Order by the lb.
ASC215 - - - -	Alum. 15" Coil	50/80, 80/RB, AL/WI, BB/BZ, BU/NW, CC/CA, DS/VG, EG/WH, HC/LI, HG/CG, MR/SP, PC/ST, PH/WH, RB/HV, RB/MB, RS/DM, RW/BK, S7/WH, TA/CU, TB/BB, WB/HV, WB/MB, WH/HV, WT/CA	0.027	Order by the lb.
ASC31178 - -	Alum. 11-7/8" Coil	AL, BU, BZ, CA, DS, FR, HV, MS, PC, RB, ST, TB, WH, WI	0.032	Order by the lb.
ASC315 - -	Alum. 15" Coil	AL, BZ, CA, FR, HV, MS, PC, RB, TB, WH, WI	0.032	Order by the lb.
CSC21178	Copper 11-7/8" Coil	Copper	16 oz	Order by the lb.
CSC215	Copper 15" Coil	Copper	16 oz	Order by the lb.

Min. of 25 lbs./Max. of 150 lbs.

***NOTE:** One week extended lead-time for these spin down coil colors.

As an extra service, we'll spin down small quantities of a slow moving color on a special order basis. Minimum quantity is 25 lbs.

Please note, once order is activated, no returns or changes can be made.

Rainware & Accessories Colors:

COLOR	CODE	COLOR	CODE	COLOR	CODE	COLOR	CODE	COLOR	CODE
NX ALMOND	AD	COPPER PENNY	CP	HERITAGE CREAM	HC	REDWOOD	RW*	TAHOE BLUE	TA*
ALMOND	AL	COUNTRY BLUE	CU*	NX LINEN	LN	ROSEWOOD	RS	TERRA BRONZE	TB
BEAVER BROWN	BB*	DESERT MAUVE	DM	LINEN	LI	ROYAL BROWN	RB*	VICTORIAN GREY	VG*
BLACK	BK*	DESERT SAND	DS*	MARINE GREEN	MR	RUSTIC COPPER	M2**	WEATHERED BRONZE	WB
BRONZE	BZ	EVERGREEN	EG*	MONTANA SUEDE	MS	NX SAND STONE	SS	WHEAT	WT
BUCKSKIN	BU	FROST	FR	MUSKET BROWN	MB	SANDTONE	ST	WICKER	WI*
CAMEO	CA	HARBOR GREY	HG*	NORWEGIAN WOOD	NW	SEA BLUE	S7	30 WHITE	WH*
CHARCOAL GREY	CG*	HARVEST BROWN	HV*	PEBBLESTONE CLAY	PC*	NX SIERRA	SI	50 WHITE	50
CLASSIC CREAM	CC*			PEACH	PH	SPANISH GREEN	SP	80 WHITE	80

***Available in STEEL**

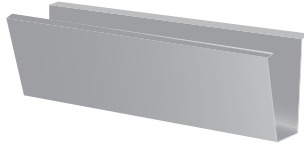
****Rustic Copper is a PREMIUM color.**



NORANDEX™ Gutters

LODI PLANT

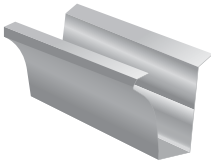
Gutter - Plain



Part #	Description	Colors	Nom. Gauge/ Thickness	Pieces Length	Pieces/ Box
PGUPW520	Bond. 5-1/4 Gutter-PW	Bond.	26 ga	20'	Order by the pc.
PGUPW525	Bond. 5-1/4 Gutter-PW	Bond.	26 ga	25'	Order by the pc.
PGUPW530	Bond. 5-1/4 Gutter-PW	Bond.	26 ga	30'	Order by the pc.
PGUPW720	Bond. 7-1/4 Gutter-PW	Bond.	26 ga	20'	Order by the pc.
PGUPW725	Bond. 7-1/4 Gutter-PW	Bond.	26 ga	25'	Order by the pc.
PGUPW730	Bond. 7-1/4 Gutter-PW	Bond.	26 ga	30'	Order by the pc.

Note: Also available without wing.

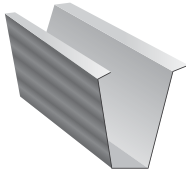
Gutter - Curved



Part #	Description	Colors	Nom. Gauge/ Thickness	Pieces Length	Pieces/ Box
PGUCW525	Bond. 5-1/4 Gutter-CW	Bond.	26 ga	25'	Order by the pc.
PGUCW720	Bond. 7-1/4 Gutter-CW	Bond.	26 ga	20'	Order by the pc.
PGUCW725	Bond. 7-1/4 Gutter-CW	Bond.	26 ga	25'	Order by the pc.
PGUCW730	Bond. 7-1/4 Gutter-CW	Bond.	26 ga	30'	Order by the pc.

Note: Also available without wing.

Gutter - Decco



Part #	Description	Colors	Nom. Gauge/ Thickness	Pieces Length	Pieces/ Box
PGUDW520	Bond. 5-1/4 Gutter-DW	Bond.	26 ga	20'	Order by the pc.
PGUDW525	Bond. 5-1/4 Gutter-DW	Bond.	26 ga	25'	Order by the pc.
PGUDW530	Bond. 5-1/4 Gutter-DW	Bond.	26 ga	30'	Order by the pc.
PGUDW720	Bond. 7-1/4 Gutter-DW	Bond.	26 ga	20'	Order by the pc.
PGUDW725	Bond. 7-1/4 Gutter-DW	Bond.	26 ga	25'	Order by the pc.
PGUDW730	Bond. 7-1/4 Gutter-DW	Bond.	26 ga	30'	Order by the pc.
PGUDW4R720	Bond. 7-1/4 Gutter-DW 4 Rib	Bond.	26 ga	20'	Order by the pc.
PGUDW4R725	Bond. 7-1/4 Gutter-DW 4 Rib	Bond.	26 ga	25'	Order by the pc.
PGUDW4R730	Bond. 7-1/4 Gutter-DW 4 Rib	Bond.	26 ga	30'	Order by the pc.

Note: Also available without wing.

Gutter - Tile Plain

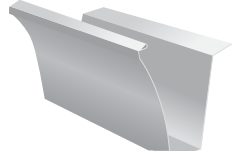
Part #	Description	Colors	Nom. Gauge/ Thickness	Pieces Length	Pieces/ Box
PGUTW720	Bond. 7-1/4 Gutter-TW	Bond.	26 ga	20'	Order by the pc.
PGUTW725	Bond. 7-1/4 Gutter-TW	Bond.	26 ga	25'	Order by the pc.
PGUTW730	Bond. 7-1/4 Gutter-TW	Bond.	26 ga	30'	Order by the pc.



NORANDEX™ Gutters

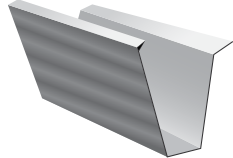
LODI PLANT

Gutter - Tile Curve



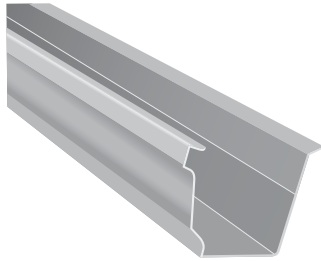
Part #	Description	Colors	Nom. Gauge/ Thickness	Pieces Length	Pieces/ Box
PGUTCW720	Bond. 7-1/4" Gutter-TCW	Bond.	26 ga	20'	Order by the pc.
PGUTCW725	Bond. 7-1/4" Gutter-TCW	Bond.	26 ga	25'	Order by the pc.
PGUTCW730	Bond. 7-1/4" Gutter-TCW	Bond.	26 ga	30'	Order by the pc.

Gutter - Tile Decco



Part #	Description	Colors	Nom. Gauge/ Thickness	Pieces Length	Pieces/ Box
PGUTDW720	Bond. 7-1/4" Gutter-TDW	Bond.	26 ga	20'	Order by the pc.
PGUTDW725	Bond. 7-1/4" Gutter-TDW	Bond.	26 ga	25'	Order by the pc.
PGUTDW730	Bond. 7-1/4" Gutter-TDW	Bond.	26 ga	30'	Order by the pc.
PGUTDW4725	Bond. 7-1/4" Gutter-TDW 4 Rib	Bond.	26 ga	25'	Order by the pc.
PGUTDW4730	Bond. 7-1/4" Gutter-TDW 4 Rib	Bond.	26 ga	30'	Order by the pc.

Gutter - K-Style



Part #	Description	Colors	Nom. Gauge/ Thickness	Pieces Length	Pieces/ Box
PGUKW420	Bond. 4" Gutter- KW	Bond.	26 ga	20'	Order by the pc.
PGUKW425	Bond. 4" Gutter- KW	Bond.	26 ga	25'	Order by the pc.
PGUKW430	Bond. 4" Gutter- KW	Bond.	26 ga	30'	Order by the pc.
PGUKW520	Bond. 5" Gutter- KW	Bond.	26 ga	20'	Order by the pc.
PGUKW525	Bond. 5" Gutter- KW	Bond.	26 ga	25'	Order by the pc.
PGUKW530	Bond. 5" Gutter- KW	Bond.	26 ga	30'	Order by the pc.
PGUKW620	Bond. 6" Gutter- KW	Bond.	26 ga	20'	Order by the pc.
PGUKW625	Bond. 6" Gutter- KW	Bond.	26 ga	25'	Order by the pc.
PGUKW630	Bond. 6" Gutter- KW w/with only	Bond.	26 ga	30'	Order by the pc.

Note: Also available without wing except for PGUKW630.



NORANDEX™ End Caps

LODI PLANT

End Cap Reference Chart

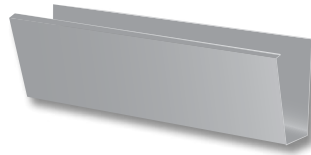
FASCIA & DECCO STYLE END CAPS



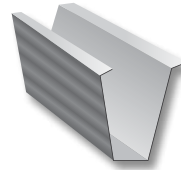
5 1/4" Fascia End Cap



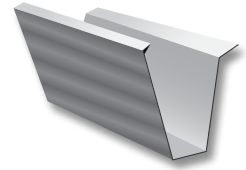
7 1/4" Fascia End Cap
Notched for roof tile applications.



**Fascia Gutter
PGUPW - -**



**Gutter Decco
PGUDW - -**



**Tile Decco Gutter
PGUTDW - -**

GEC52LML Galv. 5 1/4" Left End Cap
GEC52RML Galv. 5 1/4" Right End Cap

7 1/4" end caps are notched in back for roof tile applications.

GEC72LML Galv. 7 1/4" Left End Cap
GEC72RML Galv. 7 1/4" Right End Cap
PEC72L Bond. 7 1/4" Left End Cap
PEC72R Bond. 7 1/4" Right End Cap

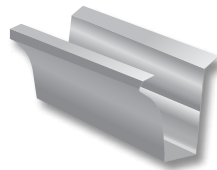
CURVED STYLE END CAPS



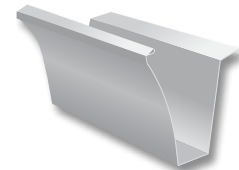
5 1/4" Curved End Cap



7 1/4" Curved End Cap
Notched for roof tile applications.



**Curved Gutter
PGUCW - -**



**Tile Curved Gutter
PGUTCW - -**

GEC52LCML Galv. 5 1/4" Left End Cap Curved
GEC52RCML Galv. 5 1/4" Right End Cap Curved

7 1/4" end caps are notched in back for roof tile applications.

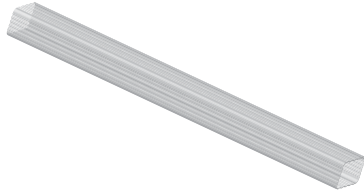
GEC72LCML Galv. 7 1/4" Left End Cap Curved
GEC72RCML Galv. 7 1/4" Right End Cap Curved
PEC72LC Bond. 7 1/4" Left End Cap Curved
PEC72RC Bond. 7 1/4" Right End Cap Curved



NORANDEX™ Downspouts

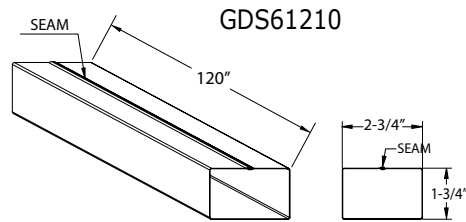
LODI PLANT

Downspouts

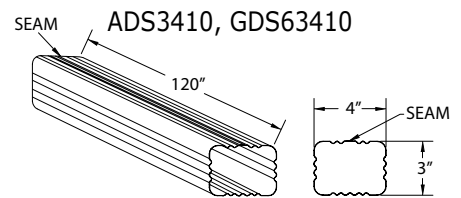
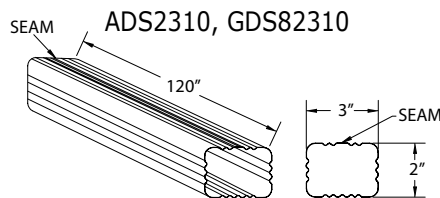


Part #	Description	Colors	Nom. Gauge/ Thickness	Piece Length	Pieces/ Box	Boxes/ Pallet
ADS238 - -	Alum. D/S 2 x 3 Corrugated 8'	(Listed Below)	0.019	8'	10	28
ADS238M2	Alum. D/S 2 x 3 Corrugated 8'	M2 (Premium Color)	0.019	8'	10	28
ADS2310 - -	Alum. D/S 2 x 3 Corrugated 10'	(Listed Below)	0.019	10'	10	28
ADS2310M2	Alum. D/S 2 x 3 Corrugated 10'	M2 (Premium Color)	0.019	10'	10	28
ADS3410 - -	Alum. D/S 3 x 4 Corrugated 10'	*(Listed Below)	0.019	10'	10	15
ADS3410M2	Alum. D/S 3 x 4 Corrugated 10'	M2 (Premium Color)	0.019	10'	10	15
ADS24510 - -	Alum. D/S 4 x 5 Corrugated 10'	RB, WH	0.027	10'	6	- -
<i>*Also available in Montana Suede (MS)</i>						
GDS61210 - -	Galv. D/S 1-3/4 x 2-3/4 Steel Painted 10'	(Steel Colors Below)	26 ga	10'	10	
GDS61210ML	Galv. D/S 1-3/4 x 2-3/4 Steel Plain 10'	Mill	26 ga	10'	10	
GDS61211ML	Galv. D/S 1-3/4 x 2-3/4 Steel Plain 11'	Mill	26 ga	11'	10	
GDS82310 - -	Galv. D/S 2 x 3 Steel Corrugated Painted 10'	(Steel Colors Below)	28 ga	10'	10	
GDS82310PR	Galv. D/S 2 x 3 Steel Corrugated Painted 10'	Prime	28 ga	10'	10	
GDS82310ML	Galv. D/S 2 x 3 Steel Corrugated 10'	Mill	28 ga	10'	10	
GDS63410 - -	Galv. D/S 3 x 4 Steel Corrugated Painted 10'	*(Steel Colors Below)	26 ga	10'	5	
GDS63410ML	Galv. D/S 3 x 4 Steel Corrugated 10'	Mill	26 ga	10'	5	
GDS63410M	Galv. D/S 3 x 4 Steel Plain 10'	Mill	26 ga	10'	5	
*Note: Extended lead time required for this part in these colors.						
PDS61210	Bond. D/S 1-3/4 x 2-3/4 Plain 10'	Bond.	26 ga	10'	10	
PDS61211	Bond. D/S 1-3/4 x 2-3/4 Plain 11'	Bond.	26 ga	11'	10	
PDS61212	Bond. D/S 1-3/4 x 2-3/4 Plain 12'	Bond.	26 ga	12'	10	
PDS61220	Bond. D/S 1-3/4 x 2-3/4 Plain 20'	Bond.	26 ga	20'	10	
PDS61222	Bond. D/S 1-3/4 x 2-3/4 Plain 22'	Bond.	26 ga	22'	10	
PDS62310	Bond. D/S 2 x 3 Plain 10'	Bond.	26 ga	10'	10	
PDS63410	Bond. D/S 3 x 4 Plain 10'	Bond.	26 ga	10'	10	
PDSW61211	Bond. D/S 1-3/4 x 2-3/4 Plain 11'	Bond.	26 ga	11'	10	
CDS2310	Copper D/S 2 x 3 Corrugated 10'	Copper	10 oz	10'	10	
CDS3410	Copper D/S 3 x 4 Corrugated 10'	Copper	10 oz	10'	10	

SMOOTH PLAIN



CORRUGATED



Rainware & Accessories Colors:

COLOR	CODE	COLOR	CODE	COLOR	CODE	COLOR	CODE	COLOR	CODE
NX ALMOND	AD	COPPER PENNY	CP	HERITAGE CREAM	HC	REDWOOD	RW*	TAHOE BLUE	TA*
ALMOND	AL	COUNTRY BLUE	CU*	NX LINEN	LN	ROSEWOOD	RS	TERRA BRONZE	TB
BEAVER BROWN	BB*	DESERT MAUVE	DM	LINEN	LI	ROYAL BROWN	RB*	VICTORIAN GREY	VG*
BLACK	BK*	DESERT SAND	DS*	MARINE GREEN	MR	RUSTIC COPPER	M2**	WEATHERED BRONZE	WB
BRONZE	BZ	EVERGREEN	EG*	MONTANA SUEDE	MS	NX SAND STONE	SS	WHEAT	WT
BUCKSKIN	BU	FROST	FR	MUSKET BROWN	MB	SANDTONE	ST	WICKER	WI*
CAMEO	CA	HARBOR GREY	HG*	NORWEGIAN WOOD	NW	SEA BLUE	S7	30 WHITE	WH*
CHARCOAL GREY	CG*	HARVEST BROWN	HV*	PEBBLESTONE CLAY	PC*	NX SIERRA	SI	50 WHITE	50
CLASSIC CREAM	CC*			PEACH	PH	SPANISH GREEN	SP	80 WHITE	80


***Available in STEEL** (extended lead-time)

****Rustic Copper is a PREMIUM color. NOTE:** Rustic Copper (M2) accessories, including miters and end caps, may display paint finish variations due to the metallic painting process, which may affect matching components.



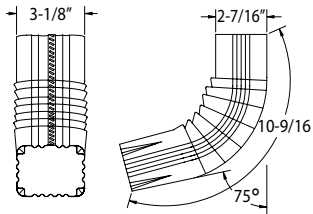
NORANDEX™ Elbows

LODI PLANT

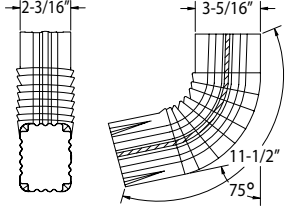
Elbows	Part #	Description	Colors	Nom. Gauge/ Thickness	Pieces/ Box
	AAE23 - -	Alum. 2 x 3 A Corrugated Elbow	(Listed Below)	0.019	30
	AAE23M2	Alum. 2 x 3 A Corrugated Elbow	M2 (Premium Color)	0.019	30
	ABE23 - -	Alum. 2 x 3 B Corrugated Elbow	(Listed Below)	0.019	30
	ABE23M2	Alum. 2 x 3 B Corrugated Elbow	M2 (Premium Color)	0.019	30
	AAE34 - -	Alum. 3 x 4 A Corrugated Elbow	(Listed Below)	0.019	30
	AAE34M2	Alum. 3 x 4 A Corrugated Elbow	M2 (Premium Color)	0.019	30
	ABE34 - -	Alum. 3 x 4 B Corrugated Elbow	(Listed Below)	0.019	30
	ABE34M2	Alum. 3 x 4 B Corrugated Elbow	M2 (Premium Color)	0.019	30
	AAE245 - -	Alum. 4 x 5 A Corrugated Elbow	RB, WH	0.019	9
	ABE245 - -	Alum. 4 x 5 A Corrugated Elbow	RB, WH	0.019	9
GAE812ML	Galv. 1-3/4 x 2-3/4 A Plain Elbow	Mill	28 ga	30	
GBE812ML	Galv. 1-3/4 x 2-3/4 B Plain Elbow	Mill	28 ga	30	
GAE823 - -	Galv. 2 x 3 A Corrugated Elbow	(Steel Colors Below)	28 ga	30	
GBE823 - -	Galv. 2 x 3 B Corrugated Elbow	(Steel Colors Below)	28 ga	30	
GAE823ML	Galv. 2 x 3 A Corrugated Elbow	Mill	28 ga	30	
GBE823ML	Galv. 2 x 3 B Corrugated Elbow	Mill	28 ga	30	
GAE823PR	Galv. 2 x 3 A Corrugated Elbow	Prime	28 ga	30	
GBE823PR	Galv. 2 x 3 B Corrugated Elbow	Prime	28 ga	30	
GAE634 - -	Galv. 3 x 4 A Corrugated Elbow	*(Steel Colors Below)	26 ga	30	
GBE634 - -	Galv. 3 x 4 B Corrugated Elbow	*(Steel Colors Below)	26 ga	30	
GAE6734ML	Galv. 3 x 4 A Smooth Elbow	Mill	26 ga	20	
GBE6734ML	Galv. 3 x 4 B Smooth Elbow	Mill	26 ga	20	
PAE12	Bond. 1-3/4 x 2-3/4 Smooth A Elbow	Bond.	26 ga	20	
CA/BE23	Copper 2 x 3 A/B Corrugated Elbow	Copper	10 oz	Order by the pc.	
CA/BE34	Copper 3 x 4 A/B Corrugated Elbow	Copper	10 oz	Order by the pc.	

***Note:** Extended lead time required for this part in these colors.

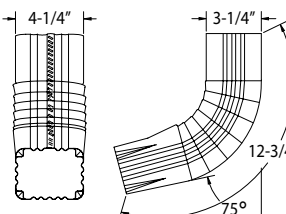
AAE23, GAE823, CAE23



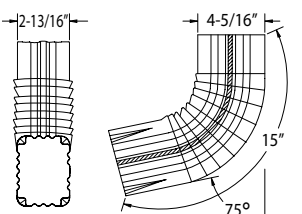
ABE23, GBE823, CBE23



AAE34, GAE634, CAE34



ABE34, GBE634, CBE34



Variable Deg. Elbows	Part #	Description	Colors	Nom. Gauge/ Thickness	Pieces/ Box
<p>Variable degree elbows are used to go around obstructions (ledge jumpers) or transition to the slope of the roof. Number of crimps to create angle can vary with manufacturer.</p>	AAE423 - -	Alum. 2 x 3 A Var Deg Elbow 45°	(Listed Below)	0.019	30
	ABE423 - -	Alum. 2 x 3 B Var Deg Elbow 45°	(Listed Below)	0.019	30
	AAE923 - -	Alum. 2 x 3 A Var Deg Elbow 90°	(Listed Below)	0.019	24
	ABE923 - -	Alum. 2 x 3 B Var Deg Elbow 90°	(Listed Below)	0.019	24
	GAE8412ML	Galv. 1-3/4 x 2-3/4 Smooth A Var Deg Elbow 45°	Mill	28 ga	20
	GAE8912ML	Galv. 1-3/4 x 2-3/4 Smooth A Var Deg Elbow 90°	Mill	28 ga	20
	GAE8423ML	Galv. 2 x 3 Smooth A Var Deg Elbow 45°	Mill	28 ga	20
	GAE8623ML	Galv. 2 x 3 Smooth A Var Deg Elbow 60°	Mill	28 ga	20
	GAE63490ML	Galv. 3 x 4 Smooth A Var Deg Elbow 90°	Mill	26 ga	30
	PAE912	Bond. 1-3/4 x 2-3/4 Smooth A Var Deg Elbow 90°	Bond.	26 ga	20

Rainware & Accessories Colors:

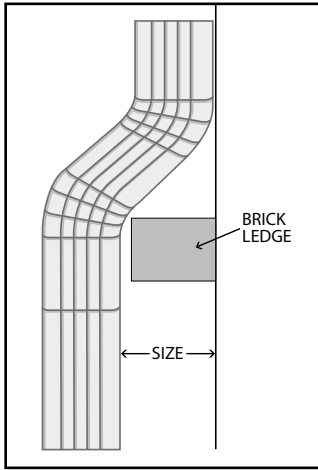
COLOR	CODE	COLOR	CODE	COLOR	CODE	COLOR	CODE	COLOR	CODE
NX ALMOND	AD	COPPER PENNY	CP	HERITAGE CREAM	HC	REDWOOD	RW*	TAHOE BLUE	TA*
ALMOND	AL	COUNTRY BLUE	CU*	NX LINEN	LN	ROSEWOOD	RS	TERRA BRONZE	TB
BEAVER BROWN	BB*	DESERT MAUVE	DM	LINEN	LI	ROYAL BROWN	RB*	VICTORIAN GREY	VG*
BLACK	BK*	DESERT SAND	DS*	MARINE GREEN	MR	RUSTIC COPPER	M2**	WEATHERED BRONZE	WB
BRONZE	BZ	EVERGREEN	EG*	MONTANA SUEDE	MS	NX SAND STONE	SS	WHEAT	WT
BUCKSKIN	BU	FROST	FR	MUSKET BROWN	MB	SANDTONE	ST	WICKER	WI*
CAMEO	CA	HARBOR GREY	HG*	NORWEGIAN WOOD	NW	SEA BLUE	S7	30 WHITE	WH*
CHARCOAL GREY	CG*	HARVEST BROWN	HV*	PEBBLESTONE CLAY	PC*	NX SIERRA	SI	50 WHITE	50
CLASSIC CREAM	CC*			PEACH	PH	SPANISH GREEN	SP	80 WHITE	80

***Available in STEEL** (extended lead-time)

****Rustic Copper is a PREMIUM color. NOTE:** Rustic Copper (M2) accessories, including miters and end caps, may display paint finish variations due to the metallic painting process, which may affect matching components.

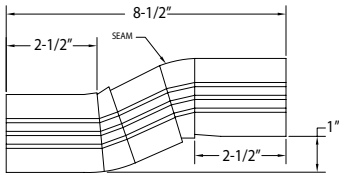


Offsets

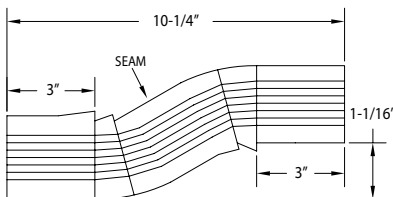


We have several varieties of offset downspout connections to transition gracefully over a brick ledge. You can eliminate the awkward look of a two-piece configuration with our choice of 1" to 6" away-from-the-wall options.

ABO1123A A-Offset



ABO1134A A-Offset



Part #	Description	Colors	Nom. Gauge/ Thickness	Pieces/ Box
ABO2A23A	Alum. Brickledge Offsets (2 pc.) 2 x 3 A's, 4 Crimps 45°	(Listed Below)	0.019	18 pcs./9 sets
ABO2A23B	Alum. Brickledge Offsets (2 pc.) 2 x 3 B's, 3 Crimps 45°	(Listed Below)	0.019	18 pcs./9 sets
ABO2A34A	Alum. Brickledge Offsets (2 pc.) 3 x 4 A's, 3 Crimps 45°	*(Listed Below)	0.019	18 pcs./9 sets
ABO2A34B	Alum. Brickledge Offsets (2 pc.) 3 x 4 B's, 3 Crimps 45°	*(Listed Below)	0.019	18 pcs./9 sets
ABO1123A	Alum. 2 x 3 - 1" Offset A's	*(Listed Below)	0.019	24
ABO1223A	Alum. 2 x 3 - 2" Offset A's	(Listed Below)	0.019	24
ABO1223AM2	Alum. 2 x 3 - 2" Offset A's	M2 (Premium Color)	0.019	24
ABO1223B	Alum. 2 x 3 - 2" Offset B's	(Listed Below)	0.019	24
ABO1423A	Alum. 2 x 3 - 4" Offset A's	(Listed Below)	0.019	20
ABO1423AM2	Alum. 2 x 3 - 4" Offset A's	M2 (Premium Color)	0.019	20
ABO1423B	Alum. 2 x 3 - 4" Offset B's	(Listed Below)	0.019	20
ABO1134A	Alum. 3 x 4 - 1" Offset A's	(Listed Below)	0.019	24
ABO1134AM2	Alum. 3 x 4 - 1" Offset A's	M2 (Premium Color)	0.019	24
ABO1134B	Alum. 3 x 4 - 1" Offset B's	(Listed Below)	0.019	24
ABO1234A	Alum. 3 x 4 - 2" Offset A's	(Listed Below)	0.019	24
ABO1234AM2	Alum. 3 x 4 - 2" Offset A's	M2 (Premium Color)	0.019	24
ABO1234B	Alum. 3 x 4 - 2" Offset B's	(Listed Below)	0.019	24
ABO1334A	Alum. 3 x 4 - 3" Offset A's	(Listed Below)	0.019	24
ABO1334AM2	Alum. 3 x 4 - 3" Offset A's	M2 (Premium Color)	0.019	24
ABO1334B	Alum. 3 x 4 - 3" Offset B's	(Listed Below)	0.019	24
ABO1434A	Alum. 3 x 4 - 4" Offset A's	(Listed Below)	0.019	20
ABO1434AM2	Alum. 3 x 4 - 4" Offset A's	M2 (Premium Color)	0.019	20
ABO1434B	Alum. 3 x 4 - 4" Offset B's	(Listed Below)	0.019	20
ABO1323A	Alum. 2 x 3 - 3" Offset A's	*(Listed Below)	0.019	24
ABO1323B	Alum. 2 x 3 - 3" Offset B's	*(Listed Below)	0.019	24
ABO1523A	Alum. 2 x 3 - 5" Offset A's	*(Listed Below)	0.019	20
ABO1523B	Alum. 2 x 3 - 5" Offset B's	*(Listed Below)	0.019	20
ABO1623A	Alum. 2 x 3 - 6" Offset A's	*(Listed Below)	0.019	20
ABO1623B	Alum. 2 x 3 - 6" Offset B's	*(Listed Below)	0.019	20
ABO1534A	Alum. 3 x 4 - 5" Offset A's	*(Listed Below)	0.019	20
ABO1534B	Alum. 3 x 4 - 5" Offset B's	*(Listed Below)	0.019	20
ABO1634A	Alum. 3 x 4 - 6" Offset A's	*(Listed Below)	0.019	20
ABO1634B	Alum. 3 x 4 - 6" Offset B's	*(Listed Below)	0.019	20
GBO1123A	Galv. 2 x 3 - 1" Offset A's	(Steel Colors Below)	26 ga	24
GBO1123B	Galv. 2 x 3 - 1" Offset B's	(Steel Colors Below)	26 ga	24
GBO1334B	Galv. 3 x 4 - 3" Offset B's	HV, WH	26 ga	24
GAOE823	Galv. 2 x 3 - 3" Offset Elbow A's	HV, WH	28 ga	24
GBOE823	Galv. 2 x 3 - 3" Offset Elbow B's	HV, WH	28 ga	24
GAOE34	Galv. 3 x 4 - 3" Offset Elbow A's	HV, WH	26 ga	24
GBOE34	Galv. 3 x 4 - 3" Offset Elbow B's	HV, WH	26 ga	24
CBO1223A	Copper 2 x 3 - 2" Offset A's	Copper	10 oz	Order by the pc.
CBO1323A	Copper 2 x 3 - 3" Offset A's	Copper	10 oz	Order by the pc.
CBO1423A	Copper 2 x 3 - 4" Offset A's	Copper	10 oz	Order by the pc.
CBO1134A	Copper 3 x 4 - 1" Offset A's	Copper	10 oz	Order by the pc.
CBO1234A	Copper 3 x 4 - 2" Offset A's	Copper	10 oz	Order by the pc.
CBO1334A	Copper 3 x 4 - 3" Offset A's	Copper	10 oz	Order by the pc.
CBO1434A	Copper 3 x 4 - 4" Offset A's	Copper	10 oz	Order by the pc.
CBO1634A	Copper 3 x 4 - 6" Offset A's	Copper	10 oz	Order by the pc.

*Not available in Rustic Copper (M2).

Rainware & Accessories Colors:

COLOR	CODE	COLOR	CODE	COLOR	CODE	COLOR	CODE	COLOR	CODE
NX ALMOND	AD	COPPER PENNY	CP	HERITAGE CREAM	HC	REDWOOD	RW*	TAHOE BLUE	TA*
ALMOND	AL	COUNTRY BLUE	CU*	NX LINEN	LN	ROSEWOOD	RS	TERRA BRONZE	TB
BEAVER BROWN	BB*	DESERT MAUVE	DM	LINEN	LI	ROYAL BROWN	RB*	VICTORIAN GREY	VG*
BLACK	BK*	DESERT SAND	DS*	MARINE GREEN	MR	RUSTIC COPPER	M2**	WEATHERED BRONZE	WB
BRONZE	BZ	EVERGREEN	EG*	MONTANA SUEDE	MS	NX SAND STONE	SS	WHEAT	WT
BUCKSKIN	BU	FROST	FR	MUSKET BROWN	MB	SANDTONE	ST	WICKER	WI*
CAMEO	CA	HARBOR GREY	HG*	NORWEGIAN WOOD	NW	SEA BLUE	S7	30 WHITE	WH*
CHARCOAL GREY	CG*	HARVEST BROWN	HV*	PEBBLESTONE CLAY	PC*	NX SIERRA	SI	50 WHITE	50
CLASSIC CREAM	CC*			PEACH	PH	SPANISH GREEN	SP	80 WHITE	80

*Available in STEEL (extended lead-time)

**Rustic Copper is a PREMIUM color. NOTE: Rustic Copper (M2) accessories, including miters and end caps, may display paint finish variations due to the metallic painting process, which may affect matching components.



NORANDEX™ Downspout Accessories

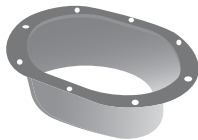
LODI PLANT

Leader Heads



Part #	Description	Colors	Nom. Gauge/ Thickness	Pieces/ Box
ALH23WH	Alum. 2 x 3 Leader Head - 9 x 7 Opening	WH	0.027	15
ALH34WH	Alum. 3 x 4 Leader Head - 10 x 6 Opening	WH	0.027	12
GLH12ML	Galv. 1-3/4 x 2-3/4 Leader Head - 10 x 5 Opening	Mill	26 ga	Order by the pc.
GLH23ML	Galv. 2 x 3 Leader Head - 9 x 7 Opening	Mill	26 ga	Order by the pc.
GLH34ML	Galv. 3 x 4 Leader Head - 9 x 7 Opening	Mill	26 ga	Order by the pc.
CCH3	Copper 3" Conductor Head	Copper	16 oz	Order by the pc.

Outlets

Rectangle
OutletOval
Outlet

Part #	Description	Colors	Nom. Gauge/ Thickness	Pieces/ Box
AOOV34ML	Alum. 4" Oval Outlet	*	0.019	50
AORE23ML	Alum. 2 x 3 Rectangle Outlet	*	0.019	30
AORE34ML	Alum. 3 x 4 Rectangle Outlet	*	0.019	50
AORE45ML	Alum. 4 x 5 Rectangle Outlet	*	0.019	50
GOOV3ML	Galv. 3" Oval Outlet	Mill	28 ga	50
GORE12ML	Galv. 1-3/4 x 2-3/4 Rectangle Outlet	Mill	- -	50
CORE23	Copper 2 x 3 Rectangle Outlet	Copper	16 oz	Order by the pc.
CORE34	Copper 3 x 4 Rectangle Outlet	Copper	16 oz	Order by the pc.

***NOTE:** Aluminum outlets made with mill or painted finish per manufacturer's discretion.

Wire Strainers

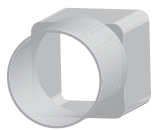


Part #	Description	Colors	Pieces/ Box
GWS2	Galv. 2" Wire Strainer	Mill	50
GWS3	Galv. 3" Wire Strainer	Mill	50

Drain Tile Adapters

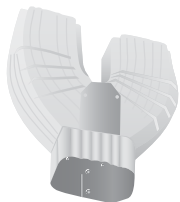
APVC234

DTA344



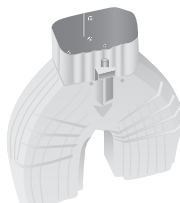
Part #	Description	Colors	Pieces/ Box
APVC233WH	PVC 2 x 3 x 3 Flush Mount Adapter	WH	12
APVC234 - -	PVC 2 x 3 x 4 Flush Mount Adapter	WH	12
DTA234 - -	High Density Polyethylene 2x3 Adapter	BK	12
DTA344 - -	High Density Polyethylene 3x4 Adapter	BK, WH	24

Y Adapters



Part #	Description	Colors	Nom. Gauge/ Thickness	Pieces/ Box
AYA23 - -	Alum. 2 x 3 Y Adapter	RB, WH	0.019	10
AYA34 - -	Alum. 3 x 4 Y Adapter	RB, WH	0.019	10

Y Diverters



Part #	Description	Colors	Nom. Gauge/ Thickness	Pieces/ Box
AYD23 - -	Alum. 2 x 3 Y Diverter	RB, WH	0.019	10
AYD34 - -	Alum. 3 x 4 Y Diverter	RB, WH	0.019	10



NORANDEX™ Downspout Accessories

LODI PLANT

Funnels

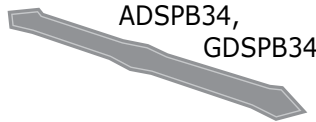


Part #	Description	Colors	Nom. Gauge/ Thickness	Pieces/ Box
AFN23 - -	Alum. 2 x 3 Funnel	RB, WH	0.018	12
AFN34RB	Alum. 3 x 4 Funnel	RB	0.018	12

Pipe Bands/Clips/Cleats



ADSPB23,
GDSPB23



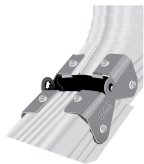
ADSPB34,
GDSPB34



APC1

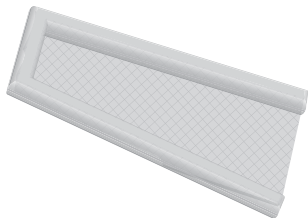
Part #	Description	Colors	Nom. Gauge/ Thickness	Pieces/ Box
ADSPB23 - -	Alum. 2 x 3 Pipe Band	(Listed Below)	0.019	100
ADSPB34 - -	Alum. Pipe Band, Fits 2 x 3 & 3 x 4	(Listed Below)	0.019	100
ADSPB34M2	Alum. Pipe Band, Fits 2 x 3 & 3 x 4	M2 (Premium Color)	0.019	100
APC1 - -	Alum. 2 x 3 Pipe Cleat	RB, WH	0.019	100
ADSCP23 - -	Alum. 2 x 3 Clip	*(Listed Below)	0.032	100
ADSCP34 - -	Alum. 3 x 4 Clip	(Listed Below)	0.032	50
<i>*Also available in Montana Suede (MS).</i>				
GDSPB12 - -	Galv. 1-3/4 x 2-3/4 Leader Strap	BB, BK, CC, CG, CU, DS, EG, HG, HV, PC, RB, RW, TA, VG, WH, WI	26 ga	100
GDSPB12ML	Galv. 1-3/4 x 2-3/4 Leader Strap	Mill	26 ga	100
GDSPB23 - -	Galv. 2 x 3 Pipe Band	(Steel Colors Below)	26 ga	100
GDSPB23ML	Galv. 2 x 3 Leader Strap	Mill	26 ga	100
GDSPB34 - -	Galv. Pipe Band, Fits 2 x 3 & 3 x 4	(Steel Colors Below)	26 ga	100
GDSPB34ML	Galv. 3 x 4 Leader Strap	Mill	26 ga	100
GDSPB46ML	Galv. 4 x 6 Pipe Band	Mill	26 ga	100
CDSCP23	Copper 2 x 3 Clip	Copper	16 oz	Order by the pc.

Downspout Hinges



Part #	Description	Colors	Pairs/ Bag	Bags/ Box	Pairs/ Box
AZHWH	Aluminum 2 x 3 / 3 x 4 Zip Hinge	WH	12 pairs	20	240 pairs

Splash Blocks



Part #	Description	Colors	Pieces/ Box
SBGN	Splash Block - Green	GN	Order by the pc. 10 pcs./box
SBBR	Splash Block - Brown	BR	Order by the pc. 10 pcs./box

Rainware & Accessories Colors:

COLOR	CODE	COLOR	CODE	COLOR	CODE	COLOR	CODE	COLOR	CODE
NX ALMOND	AD	COPPER PENNY	CP	HERITAGE CREAM	HC	REDWOOD	RW*	TAHOE BLUE	TA*
ALMOND	AL	COUNTRY BLUE	CU*	NX LINEN	LN	ROSEWOOD	RS	TERRA BRONZE	TB
BEAVER BROWN	BB*	DESERT MAUVE	DM	LINEN	LI	ROYAL BROWN	RB*	VICTORIAN GREY	VG*
BLACK	BK*	DESERT SAND	DS*	MARINE GREEN	MR	RUSTIC COPPER	M2**	WEATHERED BRONZE	WB
BRONZE	BZ	EVERGREEN	EG*	MONTANA SUEDE	MS	NX SAND STONE	SS	WHEAT	WT
BUCKSKIN	BU	FROST	FR	MUSKET BROWN	MB	SANDTONE	ST	WICKER	WI*
CAMEO	CA	HARBOR GREY	HG*	NORWEGIAN WOOD	NW	SEA BLUE	S7	30 WHITE	WH*
CHARCOAL GREY	CG*	HARVEST BROWN	HV*	PEBBLESTONE CLAY	PC*	NX SIERRA	SI	50 WHITE	50
CLASSIC CREAM	CC*			PEACH	PH	SPANISH GREEN	SP	80 WHITE	80

***Available in STEEL (extended lead-time)**

****Rustic Copper is a PREMIUM color. NOTE:** Rustic Copper (M2) accessories, including miters and end caps, may display paint finish variations due to the metallic painting process, which may affect matching components.

NORANDEX™ Miters

LODI PLANT

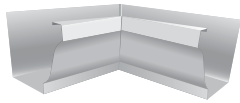
Extreme™ Miters



Extreme™ Miter

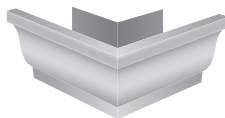
Part #	Description	Colors	Nom. Gauge/ Thickness	Pieces/ Box
AEM5 - -	Alum. 5" Extreme™ Miter	RB, WH, 80	0.019	10
AEM6WH	Alum. 6" Extreme™ Miter	WH	0.019	10

Box Miters



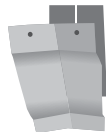
Box Miter Inside

Box Miter Outside



Part #	Description	Colors	Nom. Gauge/ Thickness	Pieces/ Box
ABM5I - -	Alum. 5" Inside K Box Miter	(Listed Below)	0.019	20
ABM5IM2	Alum. 5" Inside K Box Miter	M2 (Premium Color)	0.019	20
ABM5O - -	Alum. 5" Outside K Box Miter	(Listed Below)	0.019	20
ABM5OM2	Alum. 5" Outside K Box Miter	M2 (Premium Color)	0.019	20
ABM6I - -	Alum. 6" Inside K Box Miter	*(Listed Below)	0.019	20
ABM6IM2	Alum. 6" Inside K Box Miter	M2 (Premium Color)	0.019	20
ABM6O - -	Alum. 6" Outside K Box Miter	*(Listed Below)	0.019	20
ABM6OM2	Alum. 6" Outside K Box Miter	M2 (Premium Color)	0.019	20
<i>*Also available in Montana Suede (MS)</i>				
CBM5I	Copper 5" Inside K Box Miter	Copper	16 oz	Order by the pc.
CBM5O	Copper 5" Outside K Box Miter	Copper	16 oz	Order by the pc.
CBM6I	Copper 6" Inside K Box Miter	Copper	16 oz	Order by the pc.
CBM6O	Copper 6" Outside K Box Miter	Copper	16 oz	Order by the pc.

Bay Miters



Bay Miter 45° Inside



Bay Miter 45° Outside

Part #	Description	Colors	Nom. Gauge/ Thickness	Pieces/ Box
ABY5I - -	Alum. 5" Inside K Bay Miter	(Listed Below)	0.019	20
ABY5IM2	Alum. 5" Inside K Bay Miter	M2 (Premium Color)	0.019	20
ABY5O - -	Alum. 5" Outside K Bay Miter	(Listed Below)	0.019	20
ABY5OM2	Alum. 5" Outside K Bay Miter	M2 (Premium Color)	0.019	20
ABY6I - -	Alum. 6" Inside K Bay Miter	(Listed Below)	0.019	20
ABY6IM2	Alum. 6" Inside K Bay Miter	M2 (Premium Color)	0.019	20
ABY6O - -	Alum. 6" Outside K Bay Miter	(Listed Below)	0.019	20
ABY6OM2	Alum. 6" Outside K Bay Miter	M2 (Premium Color)	0.019	20
CBY5I	Copper 5" Inside K Bay Miter	Copper	16 oz	Order by the pc.
CBY5O	Copper 5" Outside K Bay Miter	Copper	16 oz	Order by the pc.
CBY6I	Copper 6" Inside K Bay Miter	Copper	16 oz	Order by the pc.
CBY6O	Copper 6" Outside K Bay Miter	Copper	16 oz	Order by the pc.

Strip Miters



Strip Miter 90° Inside



Strip Miter 90° Outside

Part #	Description	Colors	Nom. Gauge/ Thickness	Pieces/ Box
ASM5I - -	Alum. 5" Inside K Strip Miter	(Listed Below)	0.027	20
ASM5IM2	Alum. 5" Inside K Strip Miter	M2 (Premium Color)	0.027	20
ASM5O - -	Alum. 5" Outside K Strip Miter	(Listed Below)	0.027	20
ASM5OM2	Alum. 5" Outside K Strip Miter	M2 (Premium Color)	0.027	20
ASM6I - -	Alum. 6" Inside K Strip Miter	(Listed Below)	0.027	20
ASM6IM2	Alum. 6" Inside K Strip Miter	M2 (Premium Color)	0.027	20
ASM6O - -	Alum. 6" Outside K Strip Miter	(Listed Below)	0.027	20
ASM6OM2	Alum. 6" Outside K Strip Miter	M2 (Premium Color)	0.027	20
CSM5I	Copper 5" Inside K Strip Miter	Copper	16 oz	Order by the pc.
CSM5O	Copper 5" Outside K Strip Miter	Copper	16 oz	Order by the pc.
CSM6I	Copper 6" Inside K Strip Miter	Copper	16 oz	Order by the pc.
CSM6O	Copper 6" Outside K Strip Miter	Copper	16 oz	Order by the pc.

Rainware & Accessories Colors:

COLOR	CODE	COLOR	CODE	COLOR	CODE	COLOR	CODE	COLOR	CODE
NX ALMOND	AD	COPPER PENNY	CP	HERITAGE CREAM	HC	REDWOOD	RW*	TAHOE BLUE	TA*
ALMOND	AL	COUNTRY BLUE	CU*	NX LINEN	LN	ROSEWOOD	RS	TERRA BRONZE	TB
BEAVER BROWN	BB*	DESERT MAUVE	DM	LINEN	LI	ROYAL BROWN	RB*	VICTORIAN GREY	VG*
BLACK	BK*	DESERT SAND	DS*	MARINE GREEN	MR	RUSTIC COPPER	M2**	WEATHERED BRONZE	WB
BRONZE	BZ	EVERGREEN	EG*	MONTANA SUEDE	MS	NX SAND STONE	SS	WHEAT	WT
BUCKSKIN	BU	FROST	FR	MUSKET BROWN	MB	SANDTONE	ST	WICKER	WI*
CAMEO	CA	HARBOR GREY	HG*	NORWEGIAN WOOD	NW	SEA BLUE	S7	30 WHITE	WH*
CHARCOAL GREY	CG*	HARVEST BROWN	HV*	PEBBLESTONE CLAY	PC*	NX SIERRA	SI	50 WHITE	50
CLASSIC CREAM	CC*			PEACH	PH	SPANISH GREEN	SP	80 WHITE	80

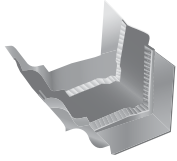
***Rustic Copper is a PREMIUM color. NOTE:** Rustic Copper (M2) accessories, including miters and end caps, may display paint finish variations due to the metallic painting process, which may affect matching components.



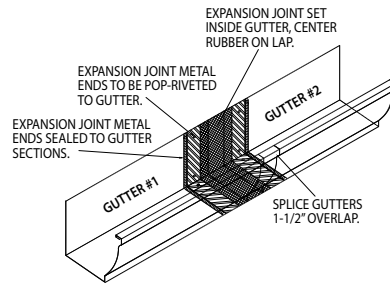
NORANDEX™ Joints

LODI PLANT

Expansion Joints



Part #	Description	Colors	Nom. Gauge/ Thickness	Pieces/ Box
AEJ5ML	Alum. 5" K Expansion Joint	Mill	0.030	12
AEJ6ML	Alum. 6" K Expansion Joint	Mill	0.030	12

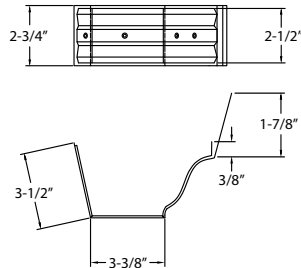


A 50' section of gutter can potentially expand almost 2/3 of an inch from winter to summer causing gutters to buckle. Expansion joints are a preventive measure for excessive movement in the gutter, and should be mounted in place every 50' of exceptionally long gutter runs.

Slip Joints



Part #	Description	Colors	Nom. Gauge/ Thickness	Pieces/ Box
ASJC5 - -	Alum. 5" K Slip Joint	RB, WH	0.019	Order by the pc.






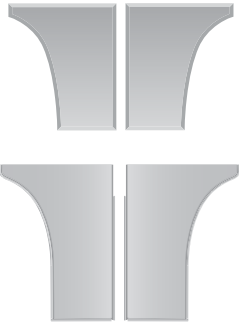
ALUMINUM Roofing Accessories Colors:

COLOR	CODE	COLOR	CODE
ROYAL BROWN	RB	WHITE	WH



NORANDEX™ End Caps

LODI PLANT

End Caps	Part #	Description	Colors	Nom. Gauge/ Thickness	Piece Length	Pieces/ Box
	AEC5L - -	Alum. 5" Left End Cap - K-Style	*(Listed Below)	0.019	5"	50
	AEC5LM2	Alum. 5" Left End Cap - K-Style	M2 (Premium Color)	0.019	5"	50
	AEC5R - -	Alum. 5" Right End Cap - K-Style	*(Listed Below)	0.019	5"	50
	AEC5RM2	Alum. 5" Right End Cap - K-Style	M2 (Premium Color)	0.019	5"	50
	AEC6L - -	Alum. 6" Left End Cap - K-Style	(Listed Below)	0.019	6"	50
	AEC6LM2	Alum. 6" Left End Cap - K-Style	M2 (Premium Color)	0.019	6"	50
	AEC6R - -	Alum. 6" Right End Cap - K-Style	(Listed Below)	0.019	6"	50
	AEC6RM2	Alum. 6" Right End Cap - K-Style	M2 (Premium Color)	0.019	6"	50
	AFEC525L - -	Alum. 5 1/4" Left End Cap Seamless Fascia	(Listed Below)	0.019	5 1/4"	50
	AFEC525R - -	Alum. 5 1/4" Right End Cap Seamless Fascia	(Listed Below)	0.019	5 1/4"	50
<i>*Also available in Montana Suede (MS)</i>						
	GEC4LML	Galv. 4" Left End Cap - K-Style	Mill	26 ga	4"	50
	GEC4RML	Galv. 4" Right End Cap - K-Style	Mill	26 ga	4"	50
	GEC5L - -	Galv. 5" Left End Cap - K-Style	(Steel Colors Below)	26 ga	5"	30
	GEC5R - -	Galv. 5" Right End Cap - K-Style	(Steel Colors Below)	26 ga	5"	30
	GEC5LML	Galv. 5" Left End Cap - K-Style	Mill	26 ga	5"	50
	GEC5RML	Galv. 5" Right End Cap - K-Style	Mill	26 ga	5"	50
	GEC6L - -	Galv. 6" Left End Cap - K-Style	(Steel Colors Below)	26 ga	6"	30
	GEC6R - -	Galv. 6" Right End Cap - K-Style	(Steel Colors Below)	26 ga	6"	30
	GEC6LPR	Galv. 6" Left End Cap - K-Style	Prime	26 ga	6"	30
	GEC6RPR	Galv. 6" Right End Cap - K-Style	Prime	26 ga	6"	30
	GEC6LML	Galv. 6" Left End Cap - K-Style	Mill	26 ga	6"	50
	GEC6RML	Galv. 6" Right End Cap - K-Style	Mill	26 ga	6"	50
	GEC52LC - -	Galv. 5 1/4" Left End Cap fits Curved style gutters	(Steel Colors Below)	26 ga	5 1/4"	50
	GEC52RC - -	Galv. 5 1/4" Right End Cap fits Curved style gutters	(Steel Colors Below)	26 ga	5 1/4"	50
	GEC52LCML	Galv. 5 1/4" Left End Cap fits Curved style gutters	Mill	26 ga	5 1/4"	50
	GEC52RCML	Galv. 5 1/4" Right End Cap fits Curved style gutters	Mill	26 ga	5 1/4"	50
	GEC72LCML	Galv. 7 1/4" Left End Cap fits Curved style gutters, notched for roof tile apps.	Mill	26 ga	7 1/4"	50
	GEC72RCML	Galv. 7 1/4" Right End Cap fits Curved style gutters, notched for roof tile apps.	Mill	26 ga	7 1/4"	50
	GFEC725L - -	Galv. 7 1/4" Left End Cap Seamless Fascia	(Steel Colors Below)	26 ga	7 1/4"	50
	GFEC725R - -	Galv. 7 1/4" Right End Cap Seamless Fascia	(Steel Colors Below)	26 ga	7 1/4"	50
	GEC52LML	Galv. 5 1/4" Left End Cap fits Fascia & Decco style gutters	Mill	26 ga	5 1/4"	50
	GEC52RML	Galv. 5 1/4" Right End Cap fits Fascia & Decco style gutters	Mill	26 ga	5 1/4"	50
	GEC72LML	Galv. 7 1/4" Left End Cap fits Fascia & Decco style gutters, notched for roof tile apps.	Mill	26 ga	7 1/4"	50
	GEC72RML	Galv. 7 1/4" Right End Cap fits Fascia & Decco style gutters, notched for roof tile apps.	Mill	26 ga	7 1/4"	50
	PEC5L	Bond. 5" Left End Cap fits K-Style gutters	Bond.	26 ga	5 1/4"	50
	PEC5R	Bond. 5" Right End Cap fits K-Style gutters	Bond.	26 ga	5 1/4"	50
	PEC52L	Bond. 5 1/4" Left End Cap fits Fascia & Decco gutters	Bond.	26 ga	5 1/4"	50
	PEC52R	Bond. 5 1/4" Right End Cap fits Fascia & Decco gutters	Bond.	26 ga	5 1/4"	50
	PEC72L	Bond. 7 1/4" Left End Cap fits Fascia & Decco style gutters, notched for roof tile apps.	Bond.	26 ga	7 1/4"	50
	PEC72R	Bond. 7 1/4" Right End Cap fits Fascia & Decco style gutters, notched for roof tile apps.	Bond.	26 ga	7 1/4"	50
PEC72LC	Bond. 7 1/4" Left End Cap fits Curved style gutters, notched for roof tile apps.	Bond.	26 ga	7 1/4"	50	
PEC72RC	Bond. 7 1/4" Right End Cap fits Curved style gutters, notched for roof tile apps.	Bond.	26 ga	7 1/4"	50	
CEC5L/R	Copper 5" Left/Right End Cap - K-Style	Copper	10 oz	5"	Order by pc.	
CEC6L/R	Copper 6" Left/Right End Cap - K-Style	Copper	10 oz	6"	Order by pc.	

Rainware & Accessories Colors:

COLOR	CODE	COLOR	CODE	COLOR	CODE	COLOR	CODE	COLOR	CODE
NX ALMOND	AD	COPPER PENNY	CP	HERITAGE CREAM	HC	REDWOOD	RW*	TAHOE BLUE	TA*
ALMOND	AL	COUNTRY BLUE	CU*	NX LINEN	LN	ROSEWOOD	RS	TERRA BRONZE	TB
BEAVER BROWN	BB*	DESERT MAUVE	DM	LINEN	LI	ROYAL BROWN	RB*	VICTORIAN GREY	VG*
BLACK	BK*	DESERT SAND	DS*	MARINE GREEN	MR	RUSTIC COPPER	M2**	WEATHERED BRONZE	WB
BRONZE	BZ	EVERGREEN	EG*	MONTANA SUEDE	MS	NX SAND STONE	SS	WHEAT	WT
BUCKSKIN	BU	FROST	FR	MUSKET BROWN	MB	SANDTONE	ST	WICKER	WI*
CAMEO	CA	HARBOR GREY	HG*	NORWEGIAN WOOD	NW	SEA BLUE	S7	30 WHITE	WH*
CHARCOAL GREY	CG*	HARVEST BROWN	HV*	PEBBLESTONE CLAY	PC*	NX SIERRA	SI	50 WHITE	50
CLASSIC CREAM	CC*			PEACH	PH	SPANISH GREEN	SP	80 WHITE	80

*Available in STEEL (extended lead-time)

**Rustic Copper is a PREMIUM color. NOTE: Rustic Copper (M2) accessories, including miters and end caps, may display paint finish variations due to the metallic painting process, which may affect matching components.



NORANDEX™ Hangers

LODI PLANT

Hidden Hangers

ABH5ML



AHH5ML

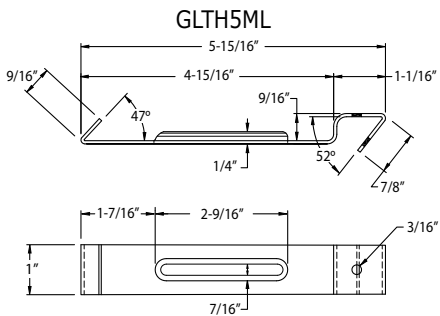
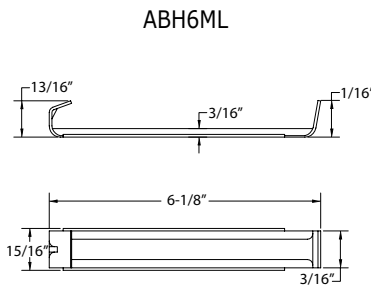
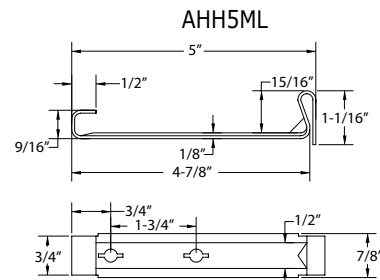
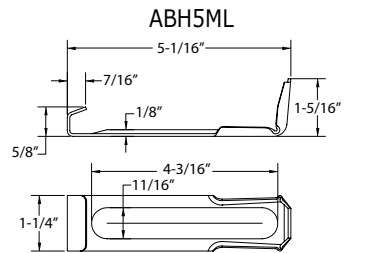


AHT5CML



Part #	Description	Colors	Nom. Gauge/ Thickness	Piece Length	Pieces/ Box
ABH451ML	Alum. 4-1/2" Backless Std. Bar Hanger	Mill	0.060	4-1/2"	100
* ALTH45ML	Alum. 4-1/2" Locktype Hanger	Mill	0.060	4-1/2"	100
ABH51ML	Alum. 5" Backless Std. Bar Hanger	Mill	0.060	5"	100
ABH5ML	Alum. 5" Backless Std. Bar Hanger	Mill	0.060	5"	400
AHH5ML	Alum. 5" Hook Hanger with Clip	Mill	0.060	5"	500
AHT51ML	Alum. 5" Hangtite Hanger	Mill	0.060	5"	100
AHT5ML	Alum. 5" Hangtite Hanger	Mill	0.060	5"	1000
AHT5CML	Alum. 5" Hangtite Hanger with Clip	Mill	0.060	5"	1000
AHU51ML	Alum. 5" Ultra Hanger without Clip	Mill	0.048	5"	100
AHU5ML	Alum. 5" Ultra Hanger without Clip	Mill	0.048	5"	1000
AHU51CML	Alum. 5" Ultra Hanger with Clip	Mill	0.048	5"	100
AHU5CML	Alum. 5" Ultra Hanger with Clip	Mill	0.048	5"	1000
ABH6ML	Alum. 6" Backless Std. Bar Hanger	Mill	0.060	6-1/8"	750
AHH6ML	Alum. 6" Hook Hanger with Clip	Mill	0.060	6"	250
AHT61ML	Alum. 6" Hangtite Hanger	Mill	0.060	6"	100
AHT6CML	Alum. 6" Hangtite Hanger with Clip	Mill	0.060	6"	1000
AHU61ML	Alum. 6" Ultra Hanger without Clip	Mill	0.048	6"	100
AHU6ML	Alum. 6" Ultra Hanger without Clip	Mill	0.048	6"	1000
AHU61CML	Alum. 6" Ultra Hanger with Clip	Mill	0.048	6"	100
AHU6CML	Alum. 6" Ultra Hanger with Clip	Mill	0.048	6"	800
GBH4ML	Galv. 4" Backless Hanger	Mill	26 ga	4"	100
GBH451ML	Galv. 4-1/2" Backless Hanger	Mill	26 ga	4-1/2"	100
* GLTH45ML	Galv. 4-1/2" Locktype Hanger	Mill	26 ga	4-1/2"	100
GBH51ML	Galv. 5" Hidden Backless Hanger	Mill	26 ga	5"	100
* GLTH5ML	Galv. 5" Locktype Hanger	Mill	26 ga	5"	100
GBH6ML	Galv. 6" Backless Hanger	Mill	26 ga	6"	100
CH5	Copper 5" Hook Hanger	Copper	16 oz	5"	Order by the pc.
CH6	Copper 6" Hook Hanger	Copper	16 oz	5"	Order by the pc.

*NOTE: Use Locktype hangers with wing-configured gutters.



Hangers w/Screws

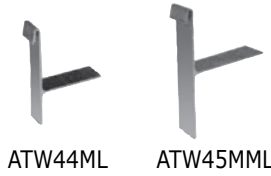
Part #	Description	Colors	Nom. Gauge/ Thickness	Piece Length	Pieces/ Box
AHFSS5ML	Alum. 5" Supreme Hanger w/Screw	Mill	0.060	5"	400
AQSHH5ML	Alum. 5" Quick Screw Hidden Hanger w/Screw	Mill	0.060	5"	500
AQSHH6ML	Alum. 6" Quick Screw Hidden Hanger w/Screw	Mill	0.060	6"	300
AHUTSSCML	Alum. 5" Ultimate Hidden Hanger w/Screw & Clip	Mill	0.061	5"	400
AHUTS6CML	Alum. 6" Ultimate Hidden Hanger w/Screw & Clip	Mill	0.061	6"	300



NORANDEX™ Hangers

LODI PLANT

T-Wedge Hangers



Part #	Description	Colors	Nom. Gauge/ Thickness	Pieces/ Bag
ATW44ML	Alum. 5" T-Wedge 4400	Mill	0.070	50
ATW45MML	Alum. 5"-6" T-Wedge 4500	Mill	0.070	50
CW5	Copper 5" T-Wedge	Copper	16 oz	Order by the Pc.
CW6	Copper 6" T-Wedge	Copper	16 oz	Order by the Pc.

A T-Wedge can be adjusted to keep the gutter level at various fascia board angles.

Gutter Wedges

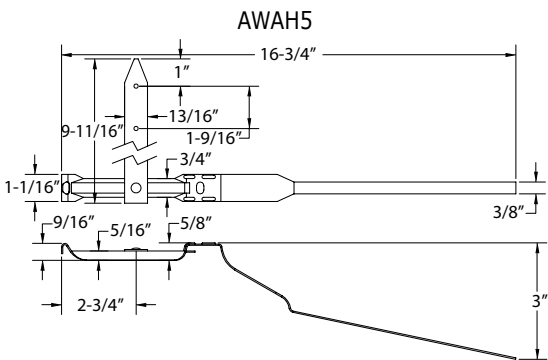


Part #	Description	Colors	Nom. Gauge/ Thickness	Pieces/ Box
GW5 - -	Alum. 5" Gutter Wedge	RB, WH	0.027	100
GW6 - -	Alum. 6" Gutter Wedge	RB, WH	0.027	50

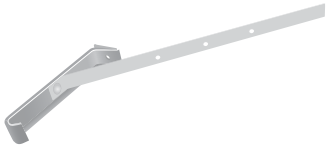
Wrap Around Hangers



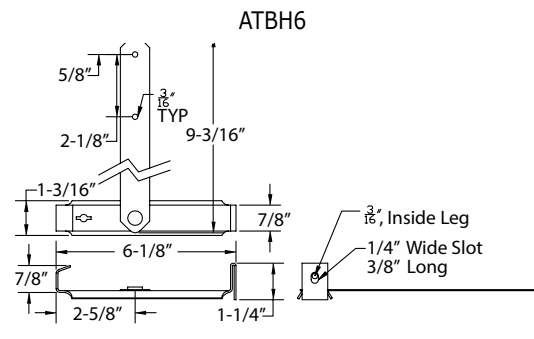
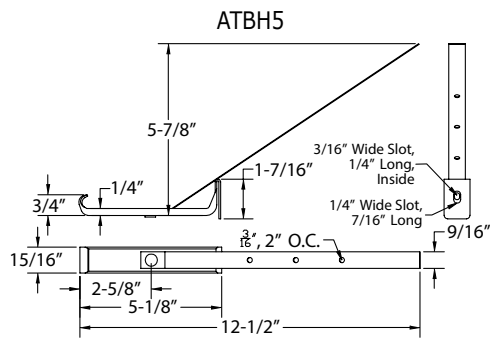
Part #	Description	Colors	Nom. Gauge/ Thickness	Piece Length	Pieces/ Box
AWAH5WH	Alum. 5" Wrap Around Hanger K	WH	0.060	16-3/4"	100



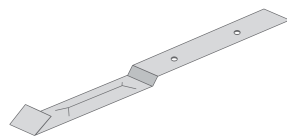
T-Bar Hangers



Part #	Description	Colors	Nom. Gauge/ Thickness	Piece Length	Pieces/ Box
ATBH5ML	Alum. 5" T-Bar Strap Hanger	Mill	0.060	12-1/2"	100
ATBH6WH	Alum. 6" T-Bar Painted Strap Hanger	WH	0.060	6-1/8"	100



Hanger Straps



Part #	Description	Colors	Pieces/ Box
GHK4ML	Galv. 4" Hanger Strap Plain K	Mill	250
GHK5ML	Galv. 5" Hanger Strap Plain K	Mill	250
GHP5ML	Galv. 5-1/4" Hanger Strap Plain	Mill	250
GHK6ML	Galv. 6" Hanger Strap Plain K	Mill	250
GHP7ML	Galv. 7-1/4" Hanger Strap Plain	Mill	250
GHT7ML	Galv. 7-1/4" Hanger Strap Tile	Mill	250

ALUMINUM Roofing Accessories Colors:

COLOR	CODE	COLOR	CODE
ROYAL BROWN	RB	WHITE	WH



NORANDEX™ Rainware Accessories

LODI PLANT

Ring Shanks (Spikes)					
Part #	Description	Colors	Piece Length	Pieces/Box	
AS7WH	Alum. 7" Ring Shank	WH	7"	500	
AS8WH	Alum. 8" Ring Shank	WH	8"	500	
GS7WH	Galv. 7" Ring Shank	WH	7"	50	

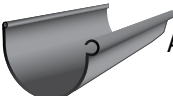
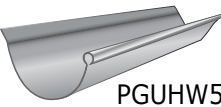
Ferrules					
Part #	Description	Colors	Piece Length	Pieces/Box	
AF5ML	Alum. 5" Ferrule	Mill	5"	500	
AF6ML	Alum. 6" Ferrule	Mill	6"	500	
GF5ML	Galv. 5" Ferrule	Mill	5"	500	
GF6ML	Galv. 6" Ferrule	Mill	6"	500	






NORANDEX™ Round & Half Round Products

LODI PLANT

Half Round Gutters		Part #	Description	Colors	Nom. Gauge/ Thickness	Piece Length	Pieces/ Box
 	AGUH610	Alum. 6" H/R Gutter Reverse Bead	(Listed Below)	0.027	10'	5	
	AGUH610M2	Alum. 6" H/R Gutter Reverse Bead	M2 (Premium Color)	0.027	10'	5	
	AGUH620	Alum. 6" Reverse Bead 20' Sections	(Listed Below)	0.027	20'	5	
	AGUH620M2	Alum. 6" Reverse Bead 20' Sections	M2 (Premium Color)	0.027	20'	5	
Sold in 5-count cartons only.							
	LGUH610	Glum. 6" Half Round Gutter	Mill	26 ga	10'	5	
Sold in 5-count cartons only.							
	PGUHW520	Bond. 5" Half Round Gutter	Bond.	26 ga	20'	Order by the pc.	

Round Downspouts		Part #	Description	Colors	Nom. Gauge/ Thickness	Piece Length	Pieces/ Box
	ADSR210	Alum. D/S 2" Round Pipe 10'	BU, MB, WH	0.019	10'	5	
	ADSR38	Alum. D/S 3" Round Pipe 8'	(Listed Below)	0.019	8'	5	
	ADSR310	Alum. D/S 3" Round Pipe 10'	(Listed Below)	0.019	10'	5	
	ADSR310M2	Alum. D/S 3" Round Pipe 10'	M2 (Premium Color)	0.019	10'	5	
	ADSR310ML	Alum. D/S 3" Round Pipe 10'	Mill	0.019	10'	5	
	ADSR410	Alum. D/S 4" Round Pipe 10'	(Listed Below)	0.019	10'	5	
	ADSR410M2	Alum. D/S 4" Round Pipe 10'	M2 (Premium Color)	0.019	10'	5	
	GDSRP262ML	Galv. D/S 2" Plain Round Pipe 10'	Mill	26 ga	10'	5	
	GDSRP263ML	Galv. D/S 3" Plain Round Pipe 10'	Mill	26 ga	10'	5	
	GDSRP264ML	Galv. D/S 4" Plain Round Pipe 10'	Mill	26 ga	10'	10	
PDSRP262	Bond. D/S 2" Plain Round Pipe 10'	Bond.	26 ga	10'	10		
PDSRP263	Bond. D/S 3" Plain Round Pipe 10'	Bond.	26 ga	10'	5		
PDSRP264	Bond. D/S 4" Plain Round Pipe 10'	Bond.	26 ga	10'	10		
PDSRP265	Bond. D/S 5" Plain Round Pipe 10'	Bond.	26 ga	10'	10		

Rainware & Accessories Aluminum Colors

COLOR	CODE	COLOR	CODE	COLOR	CODE	COLOR	CODE	COLOR	CODE
ALMOND	AL	BUCKSKIN	BU	■ COPPER PENNY	CP	ROYAL BROWN	RB	VICTORIAN GREY	VG
BEAVER BROWN	BB	CAMEO	CA	HARBOR GREY	HG	* ■ RUSTIC COPPER	M2	WICKER	WI
BLACK	BK	CHARCOAL GREY	CG	■ MUSKET BROWN	MB	SANDTONE	ST	■ 30 WHITE	WH
■ BRONZE	BZ	CLASSIC CREAM	CC	PEBBLESTONE CLAY	PC	TERRA BRONZE	TB	80 WHITE	80

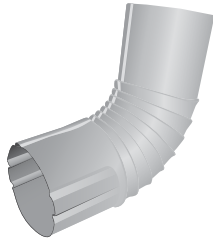
■ Stocked half-round colors. Balance of colors available with extended lead-time.
 * Rustic Copper is a PREMIUM color. NOTE: Rustic Copper (M2) accessories, including miters and end caps, may display paint finish variations due to the metallic painting process, which may affect matching components.



NORANDEX™ Round & Half Round Products

LODI PLANT

Round Elbows



Part #	Description	Colors	Nom. Gauge/Thickness	Pieces/Box
AER345 - -	Alum. 3" Round Elbow 45°	(Listed Below)	0.019	30
AER345M2	Alum. 3" Round Elbow 45°	M2 (Premium Color)	0.019	30
AER3 - -	Alum. 3" Round Elbow 75°	(Listed Below)	0.019	30
AER3WBHV	Alum. 3" Round Elbow 75°	WB/HV	0.019	30
AER3M2	Alum. 3" Round Elbow 75°	M2 (Premium Color)	0.019	30
AER390 - -	Alum. 3" Round Elbow 90°	(Listed Below)	0.019	25
AER4 - -	Alum. 4" Round Elbow 75°	(Listed Below)	0.019	30
AER4M2	Alum. 4" Round Elbow 75°	M2 (Premium Color)	0.019	30
GER245ML	Galv. 2" Round Elbow 45°	Mill	26 ga	20
GER260ML	Galv. 2" Round Elbow 60°	Mill	26 ga	20
GER275ML	Galv. 2" Round Elbow 75°	Mill	26 ga	20
GER290ML	Galv. 2" Round Elbow 90°	Mill	26 ga	20
GER345ML	Galv. 3" Round Elbow 45°	Mill	26 ga	20
GER360ML	Galv. 3" Round Elbow 60°	Mill	26 ga	20
GER375ML	Galv. 3" Round Elbow 75°	Mill	26 ga	20
GER390ML	Galv. 3" Round Elbow 90°	Mill	26 ga	20
GER445ML	Galv. 4" Round Elbow 45°	Mill	26 ga	20
GER460ML	Galv. 4" Round Elbow 60°	Mill	26 ga	20
GER475ML	Galv. 4" Round Elbow 75°	Mill	26 ga	20
GER490ML	Galv. 4" Round Elbow 90°	Mill	26 ga	20
PER345	Bond. 3" Round Elbow 45°	Bond.	26 ga	20
PER375	Bond. 3" Round Elbow 75°	Bond.	26 ga	20
PER390	Bond. 3" Round Elbow 90°	Bond.	26 ga	20
CER3	Copper 3" Round Elbow 75°	Copper	10 oz	Order by the pc.

Round Offsets



Part #	Description	Colors	Nom. Gauge/Thickness	Pieces/Box
ABO11R3 - -	Alum. (1pc.) 1" Offset 3" Round	(Listed Below)	0.019	20
ABO12R3 - -	Alum. (1pc.) 2" Offset 3" Round	(Listed Below)	0.019	20
ABO12R3M2	Alum. (1pc.) 2" Offset 3" Round	M2 (Premium Color)	0.019	20
ABO13R3 - -	Alum. (1pc.) 3" Offset 3" Round	(Listed Below)	0.019	20
ABO14R3 - -	Alum. (1pc.) 4" Offset 3" Round	(Listed Below)	0.019	20
ABO15R3 - -	Alum. (1pc.) 5" Offset 3" Round	(Listed Below)	0.019	20
ABO16R3 - -	Alum. (1pc.) 6" Offset 3" Round	(Listed Below)	0.019	20
ABO12R4M2	Alum. (1pc.) 2" Offset 4" Round	M2 (Premium Color)	0.019	20
ABO14R4M2	Alum. (1pc.) 4" Offset 4" Round	M2 (Premium Color)	0.019	20

Rainware & Accessories Aluminum Colors

COLOR	CODE	COLOR	CODE	COLOR	CODE	COLOR	CODE	COLOR	CODE
ALMOND	AL	BUCKSKIN	BU	■ COPPER PENNY	CP	ROYAL BROWN	RB	VICTORIAN GREY	VG
BEAVER BROWN	BB	CAMEO	CA	■ HARBOR GREY	HG	* ■ RUSTIC COPPER	M2	WICKER	WI
BLACK	BK	CHARCOAL GREY	CG	■ MUSKET BROWN	MB	SANDTONE	ST	■ 30 WHITE	WH
■ BRONZE	BZ	CLASSIC CREAM	CC	■ PEBBLESTONE CLAY	PC	TERRA BRONZE	TB	80 WHITE	80

■ Stocked half-round colors. Balance of colors available with extended lead-time.

*Rustic Copper is a PREMIUM color. NOTE: Rustic Copper (M2) accessories, including miters and end caps, may display paint finish variations due to the metallic painting process, which may affect matching components.

Round Leader Heads

Part #	Description	Colors	Nom. Gauge/Thickness	Pieces/Box
ALHR3 - -	Alum. 3" Round Leader Head - 9 x 7 Opening	AL, BB, HG, HV, LI, TB, VG, WB, WH, WT	0.019	Order by the pc.
GLHR3ML	Galv. 3" Round Leader Head - 9 x 7 Opening	Mill	26 ga	Order by the pc.

Round Leader Head Aluminum Colors

COLOR	CODE	COLOR	CODE	COLOR	CODE	COLOR	CODE	COLOR	CODE
ALMOND	AL	HARBOR GREY	HG	LINEN	LI	VICTORIAN GREY	VG	WHITE	WH
BEAVER BROWN	BB	HARVEST BROWN	HV	TERRA BRONZE	TB	WEATHERED BRONZE	WB	WHEAT	WT



NORANDEX™ Round & Half Round Products

LODI PLANT

D/S Bands/Straps	Part #	Description	Colors	Nom. Gauge/ Thickness	Pieces/ Box
	GDSPBR2ML	Galv. 2" Round D/S Strap	Mill	26 ga	100
	GDSPBR3ML	Galv. 3" Round D/S Strap	Mill	26 ga	100
	GDSPBR4ML	Galv. 4" Round D/S Strap	Mill	26 ga	100
	GDSPBR5ML	Galv. 5" Round D/S Strap	Mill	26 ga	100

Round & H/R Outlets	Part #	Description	Colors	Pieces/ Box
	AOROH63ML	Alum 3" Half Round Drop Outlet	*	50
	GORO2ML	Galv. 2" Round Drop Outlet	Mill	25
	GORO3ML	Galv. 3" Round Drop Outlet	Mill	50
	GOROH3ML	Galv. 3" Half Round Outlet	Mill	50
	GOROH64	Galv. 4" Round x 6" Half Round Outlet	Mill	50
	GORO25ML	Galv. 2 x 5 Round Drop Outlet	Mill	100

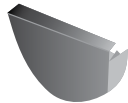
***NOTE:** Aluminum outlets made with mill or painted finish per manufacturer's discretion.

Half
Round
OutletRound
Outlet

Half Round Miters	Part #	Description	Colors	Nom. Gauge/ Thickness	Pieces/ Box
	ABYH6I - -	Alum. 6" H/R Inside Bay Miter 45°	(Listed Below)	0.027	20
	ABYH6IM2	Alum. 6" H/R Inside Bay Miter 45°	M2 (Premium Color)	0.027	20
	ABYH6O - -	Alum. 6" H/R Outside Bay Miter 45°	(Listed Below)	0.027	20
	ABYH6OM2	Alum. 6" H/R Outside Bay Miter 45°	M2 (Premium Color)	0.027	20
	ASMH6I - -	Alum. 6" H/R Inside Strip Miter 90°	(Listed Below)	0.027	20
	ASMH6IM2	Alum. 6" H/R Inside Strip Miter 90°	M2 (Premium Color)	0.027	20
	ASMH6O - -	Alum. 6" H/R Outside Strip Miter 90°	(Listed Below)	0.027	20
	ASMH6OM2	Alum. 6" H/R Outside Strip Miter 90°	M2 (Premium Color)	0.027	20
	GBMH6IML	Galv. 6" H/R Inside Box Miter	Mill	26 ga	20
	GBMH6OML	Galv. 6" H/R Outside Box Miter	Mill	26 ga	20
	LSMH6I	Glum. 6" H/R Inside Strip Miter	Mill	26 ga	20
	LSMH6O	Glum. 6" H/R Outside Strip Miter	Mill	26 ga	20

Half Round End Caps	Part #	Description	Colors	Nom. Gauge/ Thickness	Pieces/ Box
	AECH6 - -	Alum. 6" Half Round Universal End Cap	*(Listed Below)	0.019	20
	AECH6M2	Alum. 6" Half Round Universal End Cap	M2 (Premium Color)	0.019	20
	GECH5ML	Galv. 5" Half Round Universal End Cap	Mill	26 ga	50
	GECH6ML	Galv. 6" Half Round Universal End Cap	Mill	26 ga	50
	LECH6	Glum. 6" Half Round Universal End Cap	Mill	26 ga	20

**Also available in HV/WB or WB/HV (Harvest Brown & Weathered Bronze)*



Rainware & Accessories Aluminum Colors

COLOR	CODE	COLOR	CODE	COLOR	CODE	COLOR	CODE	COLOR	CODE
ALMOND	AL	BUCKSKIN	BU	■ COPPER PENNY	CP	ROYAL BROWN	RB	VICTORIAN GREY	VG
BEAVER BROWN	BB	CAMEO	CA	■ HARBOR GREY	HG	★ ■ RUSTIC COPPER	M2	WICKER	WI
BLACK	BK	CHARCOAL GREY	CG	■ MUSKET BROWN	MB	SANDTONE	ST	■ 30 WHITE	WH
■ BRONZE	BZ	CLASSIC CREAM	CC	■ PEBBLESTONE CLAY	PC	TERRA BRONZE	TB	80 WHITE	80

■ **Stocked half-round colors. Balance of colors available with extended lead-time.**

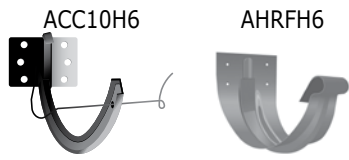
★ **Rustic Copper is a PREMIUM color. NOTE:** Rustic Copper (M2) accessories, including miters and end caps, may display paint finish variations due to the metallic painting process, which may affect matching components.



NORANDEX™ Round & Half Round Products

LODI PLANT

Half Round Brackets



Part #	Description	Colors	Nom. Gauge/ Thickness	Pieces/ Box
ACC10H6 - -	Alum. 6" H/R Combo Cir/Shk w/Clip Hanger	BZ, MB, WH, 80	0.019	50
ACC10H6ML	Alum. 6" H/R Combo Cir/Shk w/Clip Hanger	Mill	0.019	50
AHRFH6 - -	Alum. 6" H/R Fascia Hanger	BZ, MB, WH	N/A	25
AHRFH6M2	Alum. 6" H/R Fascia Hanger	M2 (Premium Color)	N/A	25
GCC10H6	Galvanized 6" HR Combo Cir/Shk w/Clip Hanger	Mill		Order by the pc.
CCC10H6	Copper 6" H/R Combo Cir/Shk w/Clip Hanger	Copper	16 oz	Order by the pc.
CHRFH6	Copper 6" H/R Fascia Hanger	Copper	16 oz	25

H/R Hidden Hangers



Part #	Description	Colors	Pieces/ Box
* AHHHR6ML	Alum. 6" Half Round Hook Hanger	Mill	100
* AHHSR6ML	Alum. 6" Half Round Hanger w/Screw	Mill	100
GHHR6ML	Galv. 6" Half Round Hanger	Mill	Order by the pc.
SHHHR6ML	Stainless Steel 6" HR Hook Hanger	Mill	100

***Only for reverse bead half round gutters**

Rainware & Accessories Aluminum Colors

COLOR	CODE	COLOR	CODE	COLOR	CODE	COLOR	CODE	COLOR	CODE
■ BRONZE	BZ	■ MUSKET BROWN	MB	★ ■ RUSTIC COPPER	M2	■ 30 WHITE	WH	80 WHITE	80

■ Stocked half-round colors. Balance of colors available with extended lead-time.

★ Rustic Copper is a PREMIUM color. NOTE: Rustic Copper (M2) accessories, including miters and end caps, may display paint finish variations due to the metallic painting process, which may affect matching components.



NORANDEX™ Copper Products

LODI PLANT

Copper Products



Copper Half Round Gutter



Copper Round Downspout



Copper Round Elbow



Half Round End Cap

Part #	Description	Nom. Gauge	Pieces/ Box
CSC21178	Copper 11-7/8" Coil	16 oz	Order by the lb.
CSC215	Copper 15" Coil	16 oz	Order by the lb.
CGUH520	Copper 5" x 20' Half Round Gutter	16 oz	5
CGUH620	Copper 6" x 20' Half Round Gutter	16 oz	5
CDS2310	Copper 2 x 3 Corrugated Downspout 10'	10 oz	Order by the pc.
CDS3410	Copper 3 x 4 Corrugated Downspout 10'	10 oz	Order by the pc.
CDSR310	Copper 3" x 10' Smooth Round Downspout	10 oz	Order by the pc.
CDSR410	Copper 4" x 10' Smooth Round Downspout	10 oz	Order by the pc.
CAE23	Copper 2 x 3 A Corrugated Elbow	10 oz	Order by the pc.
CBE23	Copper 2 x 3 B Corrugated Elbow	10 oz	Order by the pc.
CAE34	Copper 3 x 4 A Corrugated Elbow	10 oz	Order by the pc.
CBE34	Copper 3 x 4 B Corrugated Elbow	10 oz	Order by the pc.
CER3	Copper 3" x 10' Smooth Round Elbow 75°	10 oz	Order by the pc.
CER4	Copper 4" x 10' Smooth Round Elbow 75°	10 oz	Order by the pc.
CER330	Copper 3" Round Elbow 30°	10 oz	Order by the pc.
CER430	Copper 4" Round Elbow 30°	10 oz	Order by the pc.
CBO1223A	Copper 2 x 3 - 2" A Offset	10 oz	Order by the pc.
CBO1323A	Copper 2 x 3 - 3" A Offset	10 oz	Order by the pc.
CBO1423A	Copper 2 x 3 - 4" A Offset	10 oz	Order by the pc.
CBO1134A	Copper 3 x 4 - 1" A Offset	10 oz	Order by the pc.
CBO1234A	Copper 3 x 4 - 2" A Offset	10 oz	Order by the pc.
CBO1334A	Copper 3 x 4 - 3" A Offset	10 oz	Order by the pc.
CBO1434A	Copper 3 x 4 - 4" A Offset	10 oz	Order by the pc.
CBO1634A	Copper 3 x 4 - 6" A Offset	10 oz	Order by the pc.
CCH3	Copper 3" Conductor Head	16 oz	Order by the pc.
CORE23	Copper 2 x 3 Rectangle Outlet	16 oz	Order by the pc.
CORE34	Copper 3 x 4 Rectangle Outlet	16 oz	Order by the pc.
COROH63	Copper 3" Round x 6" Half Round Outlet	10 oz	Order by the pc.
COROH64	Copper 4" Round x 6" Half Round Outlet	10 oz	Order by the pc.
CDSCP23	Copper 2 x 3 Downspout Clip	16 oz	Order by the pc.
CDSPB34	Copper 3 x 4 Leader Strap (DS Band)	16 oz	Order by the pc.
CBM5I	Copper 5" Inside Box Miter	16 oz	Order by the pc.
CBM5O	Copper 5" Outside Box Miter	16 oz	Order by the pc.
CBM6I	Copper 6" Inside Box Miter	16 oz	Order by the pc.
CBM6O	Copper 6" Outside Box Miter	16 oz	Order by the pc.
CBY5I	Copper 5" Inside Bay Miter	16 oz	Order by the pc.
CBY5O	Copper 5" Outside Bay Miter	16 oz	Order by the pc.
CBY6I	Copper 6" Inside Bay Miter	16 oz	Order by the pc.
CBY6O	Copper 6" Outside Bay Miter	16 oz	Order by the pc.
CSM5I	Copper 5" Inside Strip Miter	16 oz	Order by the pc.
CSM5O	Copper 5" Outside Strip Miter	16 oz	Order by the pc.
CSM6I	Copper 6" Inside Strip Miter	16 oz	Order by the pc.
CSM6O	Copper 6" Outside Strip Miter	16 oz	Order by the pc.
CSMH6I	Copper 6" Inside Half Round Strip Miter	16 oz	Order by the pc.
CSMH6O	Copper 6" Outside Half Round Strip Miter	16 oz	Order by the pc.
CEC5L	Copper 5" Left End Cap	10 oz	Order by the pc.
CEC5R	Copper 5" Right End Cap	10 oz	Order by the pc.
CEC6L	Copper 6" Left End Cap	10 oz	Order by the pc.
CEC6R	Copper 6" Right End Cap	10 oz	Order by the pc.
CECH6	Copper 6" Half Round Universal End Cap	26 ga	Order by the pc.
CH5	Copper 5" Hook Hanger	16 oz	Order by the pc.
CH6	Copper 6" Hook Hanger	16 oz	Order by the pc.
CW5	Copper 5" Wedge	16 oz	Order by the pc.
CW6	Copper 6" Wedge	16 oz	Order by the pc.
CCC10H6	Copper 6" Half Round Combo Cir/Shk w/Clip Hanger	16 oz	Order by the pc.
CHRFH6	Copper 6" Half Round Fascia Hanger	16 oz	20



NORANDEX™ Drain Guard & Gutter Protection LODI PLANT

Drain Guard



Drain Guard

Rectangular style, wall-mount with removable basket.

Part #	Description	Colors	Pieces/Box	Pieces/Pallet
ALDG23 - -	Alum. 2 x 3 Drain Guard	WH, BR	25	375
ALDG34WH	Alum. 3 x 4 Drain Guard	WH	25	375

Screen Systems



NX Premium Stainless Steel Micro Mesh

The ultimate in gutter protection! This tightly woven, heavy gauge stainless steel micro mesh gutter guard, with its corrosion-resistant properties, is a significant debris deterrent. It installs easily under the shingles and fastens to the front gutter hem with provided screws, while self-adjusting to various roof pitches.

Part #	Description	Color	Nom. Gauge/Thickness	Piece Length	Pieces/Box	Feet/Box
ALGP5SPML	5" Premium SS Micro Mesh	Mill	14 ga	4'	25	100'
ALGP6SPML	6" Premium SS Micro Mesh	Mill	14 ga	4'	25	100'
ALMMMI56ML	Stainless Steel Mesh Inside Corner 5/6"	Mill	14 ga	-	3	-



NX Drop-In

The front attachment provides a firm hold to the front of the gutter and has a wide mounting flange for a permanent install. The mill finish aluminum screen is micro crimped for enhanced durability.

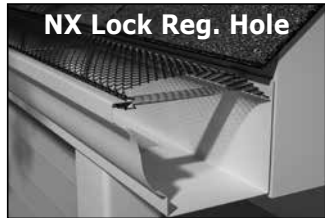
ALGP5DIML	Aluminum 5" Drop-In	Mill	0.025	4'	50	200'
ALGP6DIML	Aluminum 6" Drop-In	Mill	0.025	4'	50	200'



NX Lock Small Hole

The small hole screen system installs quickly without disturbing the shingles with its front and back snap lock system.

GGP5LSHBK	Galvanized 5" Lock Small Hole	BK	28 ga	4'	25	100'
GGP6LSHBK	Galvanized 6" Lock Small Hole	BK	28 ga	4'	25	100'
GGP7LSHBK	Galvanized 7" Lock Small Hole	BK	28 ga	4'	25	100'



NX Lock Regular Hole

The regular hole screen system installs quickly without disturbing the shingles with its front and back snap lock system.

GGP5LRHBK	Galvanized 5" Lock Regular Hole	BK	28 ga	4'	25	100'
GGP6LRHBK	Galvanized 6" Lock Regular Hole	BK	28 ga	4'	25	100'



NX Step Down

The small hole screen incorporates a raised snap-in system in the back of the gutter to seal off the void between the shingles and the screen. Step Down installs quickly without the use of screws or disturbing the shingles.

GGP5SDBK	Galvanized 5" Step Down	BK	28 ga	4'	25	100'
GGP6SDBK	Galvanized 6" Step Down	BK	28 ga	4'	25	100'

Gutter Screen System Color:

COLOR	CODE	COLOR	CODE
BLACK	BK	MILL	ML



NORANDEX™ Gutter Protection

LODI PLANT

Screen Systems (cont.)



NX Premium Lock

The tiny holes keeps out small debris, while allowing water to flow through the screen. Two stiffening beads run down the center of the screen for added strength. Installation is quick and easy without disturbing the shingles. The screen locks into place with a raised back and front-tiered mounting system.

Part #	Description	Color	Nom. Gauge/ Thickness	Piece Length	Pieces/ Box	Feet/ Box
ALGP5PLBK	Aluminum 5" Premium Lock (screen tiny holes)	BK	0.032	4'	25	100'
ALGP6PLBK	Aluminum 6" Premium Lock (screen tiny holes)	BK	0.032	4'	25	100'



NX Deluxe Half Round

NX Deluxe Half Round

Spring tension design holds this gutter screen in place. Snaps in and out of half round gutters for easy cleaning. 28 gauge steel stands tough under a full load of wet leaves without collapsing. Installs with a slope toward the front to help debris slide off.

Part #	Description	Color	Nom. Gauge/ Thickness	Piece Length	Pieces/ Box	Feet/ Box
GLGEZ6DH	Galvanized 6.5" Deluxe Half Round	BK	28 ga	4'	25	100'

Perforated & Dome



NX Smooth Flow

NX Smooth Flow

The perforated cover installs easily without disturbing the shingles. Product is factory notched for easy overlapping. Dual center ribbed bends provide extra rigidity against expansion and contraction. Six 50-count bags of #6 hex head 3/8 stainless steel painted screws are included.

Part #	Description	Colors	Nom. Gauge/ Thickness	Piece Length	Pieces/ Box	Feet/ Box
ALGP5SF - -	Alum. 5" Smooth Flow	BK, WH, ML	.019	6'	40	240'
ALGP6SF - -	Alum. 6" Smooth Flow	BK, WH, ML	.019	6'	40	240'



NX Master Flow

NX Master Flow

The snap in perforated panels are installed without disturbing the shingles and without the use of screws. The patented curved back portion keeps the contoured front mounting system in place, provides a gentle transition of rainwater on to the panel, blocks debris from depositing in the back of the gutter, and is not obstructed by screw hangers.

Part #	Description	Color	Nom. Gauge/ Thickness	Piece Length	Pieces/ Box	Feet/ Box
ALGP5MFBK	Alum. 5" Master Flow	BK	.019	4'	25	100'
ALGP6MFBK	Alum. 6" Master Flow	BK	.019	4'	25	100'



NX Snap-In Dome

NX Snap-In Dome Cover

This unique solid dome cover is designed for maximum debris load and is one of the easiest dome cover systems to install. The dome cover snaps in without the use of brackets or screws and doesn't disturb the shingles. Snap-In Dome is available in several colors to enhance the curb appeal of your home by blending in with the roof line.

Part #	Description	Color	Nom. Gauge/ Thickness	Piece Length	Pieces/ Box	Feet/ Box
ALGP5SD - -	Alum. 5" Snap-In Dome	BK, RB, TB, WH	.028	4'	14	56'
ALGP6SD - -	Alum. 6" Snap-In Dome	BK, RB, TB, WH	.028	4'	14	56'

Gutter Protection Colors:

COLOR	CODE	COLOR	CODE	COLOR	CODE	COLOR	CODE	COLOR	CODE
BLACK	BK	ROYAL BROWN	RB	TERRA BRONZE	TB	WHITE		MILL	ML

Gutter Protection

LODI PLANT

Gutter Protection

Part #	Description	Colors	Nom. Gauge/ Thickness	Piece Length	Pieces/ Box
Gutter Protection					
ALGLFH55 - -	Alum. 5"/6" Perforated High-Flow Gutter Cover with Screws 4'	BK, DB, WH	0.024	4'	25
ALGLFS5 - -	Alumi. 5"/6" Standard Solid Gutter Cover with Screws 4'	BK, DB, WH	0.024	4'	25
ALGRX5 - -	Alum. 5" Drop-In Cover 6'	DB, WH	0.019	6'	50
ALGRX6 - -	Alum. 6" Drop-In Cover 6'	DB, WH	0.019	6'	50
ALGP5CS - -	Aluminum 5" Clean Sweep 7-1/2'	BK, WH	0.019	7-1/2'	40
ALGP6CS - -	Aluminum 6" Clean Sweep 7-1/2'	BK, WH	0.019	7-1/2'	40



ALGLFH55 Perforated High-Flow



ALGLFS5 Solid



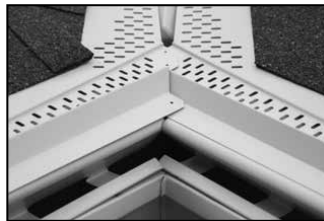
ALGRX5 Drop-In



ALGP5CSWH Clean Sweep

Gutter Protection Accessories

ALGLFM5 - -	Alum. Miters (set - 1 Left & 1 Right)	BK, DB, WH	0.024		10
ALGLFE5R - -	Alum. End Caps (Right)	BK, DB, WH	0.024	5"	25
ALGLFE5L - -	Alum. End Caps (Left)	BK, DB, WH	0.024	5"	25



ALGLFM5 Miters



ALGLFE5 R/L End Caps

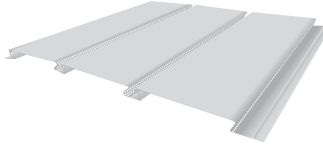
Gutter Protection Colors:

COLOR	CODE	COLOR	CODE	COLOR	CODE
BLACK	BK	DARK BRONZE	DB	30 WHITE	WH

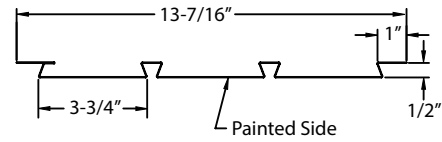
Soffit, F-Channel, & J-Channel

LODI PLANT

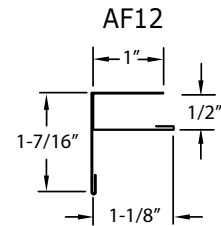
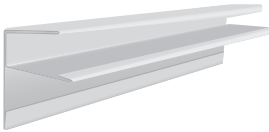
12" Hidden Vent Soffit	Part #	Description	Colors	Nom. Gauge/ Thickness	Piece Length	Pieces/ Box	Boxes/ Pallet	Pieces/ Pallet
	AST12HV - -	Alum. 12" Hidden Vent Soffit	BK, WH	0.019	12'	16	24	384



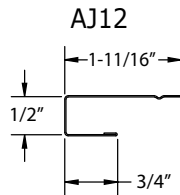
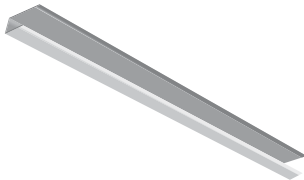
NOTE: Requires 1/2" J- or F-Channel for installation.



F-Channel	Part #	Description	Colors	Nom. Gauge/ Thickness	Piece Length	Pieces/ Box	Boxes/ Pallet	Pieces/ Pallet
	AF12 - -	Alum. 1/2" F-Channel	BK, WH	0.019	12'	25	24	600



J-Channel	Part #	Description	Colors	Nom. Gauge/ Thickness	Piece Length	Pieces/ Box	Boxes/ Pallet	Pieces/ Pallet
	AJ12 - -	Alum. 1/2" J-Channel	BK, WH	0.019	12'	25	24	600



ALUMINUM Roofing Accessories Colors:

COLOR	CODE	COLOR	CODE
BLACK	BK	WHITE	WH



ALUMINUM LIMITED LIFETIME WARRANTY GUTTER SYSTEM PRODUCTS

Norandex manufactures Aluminum Gutter Coil and Gutter System Products in accordance with high standards and tight quality controls. The aluminum products will not rust, burn, support combustion, split, or crack due to cold weather.



BUY NORANDEX GUTTER SYSTEM PRODUCTS WITH CONFIDENCE KNOWING THAT:

- Norandex Aluminum Gutter System products carry a Limited Lifetime Warranty.
- Material and Labor is covered.
- Transferable at no charge.
- Doesn't require registration.

WHAT DOES THIS WARRANTY COVER?

Norandex warrants to the owner of the property at the time the products were installed, that the products are free from defects in material and workmanship in the course of manufacture, and that the finish on the products will not chip, peel, flake, or blister under conditions of ordinary wear if installed according to local building codes and industry specifications. This warranty is limited to the terms and conditions, exclusions and limitations, requirements and legal rights stated in this warranty.

HOW LONG DOES THE COVERAGE LAST?

If the property is individually owned, this Limited Lifetime Warranty lasts for the life of the property on which the products were originally applied for as long as the individual owns the property. If the property is not individually owned (e.g., corporation, condominium, cooperative housing arrangement, unincorporated association, school, church, government or public entity, etc.), the warranty period will be 50-years from the date of original installation of the products on the property, prorated as outlined in the Warranty Coverage Schedule contained within. This Limited Lifetime Warranty may be transferred with the property. However, upon the transfer, the warranty period will be no more than 50-years from the date of original installation of the products on the property, prorated in accordance with the Warranty Coverage Schedule contained within.

WHAT WILL NORANDEX DO?

Property owner must notify Norandex in accordance with the notice requirements outlined below to validate the complaint. In the event Norandex is denied access for an inspection, this warranty is null and void. Upon the notification and validation, Norandex will undertake the following: Norandex will repair, replace, or refund the purchase price of the defective portion of Norandex product that blisters, cracks, crazes, flakes, peels, or weathers unevenly due to a defect in the manufacturing process. Norandex obligations under this warranty will in no event exceed the purchase price of the originally installed products found to be warrantable and the cost of the labor involved in the original installation of such defective products. Any additional costs and expenses beyond these amounts are the property owner's responsibility. Norandex will not pay or be responsible for any costs associated with anything else affixed to the Norandex Metals product.

In the event of repair, replacement, or refinishing, the warranty will extend only for the time remaining under the original warranty. Norandex will determine the reasonable labor costs to repair, repaint, or replace product under this warranty.

WHAT IS NOT COVERED UNDER THE WARRANTY?

This warranty does not cover damage of any kind resulting from:

- Uninstalled product that is stored in situations where standing water is covering the surface for a prolonged period of times.
- Buckling or rippling of gutters.

- Faulty or improper contractor fabrication or installation, including "oil canning", waving, buckling, or other distortions.
- Installation of product in direct contact with dissimilar materials or salt spray.
- Cracking or crazing of the paint surface due to field forming of products in cold temperatures.
- Changes in surface color resulting from chalking, fading, soiling, tree sap, or staining. Exposure to the elements may cause these changes over time; the degree to which weathering occurs will vary depending on air quality, the building's location, and other local conditions over which Norandex has no control.
- Accidental damage.
- Settlement.
- Structural shrinkage or distortion of the property structure.
- Fire.
- Lightning, hurricane, tornado, windstorm, earthquake, hail, ice damage or other acts of God.
- Harmful chemicals including harmful cleaning compounds, herbicides, fertilizers, and pesticides.
- Fumes, volcanic smog, or vapors within 30-miles of volcano.
- Surface deterioration due to air pollution, use for animal confinement structures, or within a mile of seacoast and other bodies of saltwater.
- Misuse or abuse. Use of high pressure sprayers will void warranty.
- Vandalism;
- Airborne stains, mold and mildew accumulation.
- Tiger striping or atmospheric soil accumulation is a naturally occurring phenomenon that is not covered under the finish warranty.
- Failure of original or subsequent property owners to provide reasonable and necessary maintenance of the products (see "Care & Maintenance Instructions").
- Impact of foreign objects.
- Warping or distortion due to exposure to excessive heat sources (e.g., barbecue grills), or exposure to unusual or excessive reflective heat sources (e.g., window reflection).
- Products that have been painted, reinstalled, or whose surface has been altered in any way will void the paint finish warranty.
- Any other causes beyond Norandex reasonable control.

OTHER LIMITATIONS

1. This warranty covers only genuine Norandex Aluminum Gutter Coil and Gutter System products. It is the responsibility of the property owner to verify that the Gutter System products installed are Norandex products. Norandex products are warranted in the continental United States, Hawaii, and Alaska.
2. Gutter Coil is designed and intended for Gutter System applications and should not be used as roofing material or metal dome gutter protection due to esthetic reasons.
3. Due to normal weathering, replacement products may differ in gloss and color from products originally installed on the property.
4. Norandex reserve the right to discontinue or change any design or color of any products, at any time, and without notice or liability. If products of the type originally installed are no longer available, Norandex may substitute another product determined to be of comparable quality and price.

Continued on next page →

ACM Customer Service

MW / NE - 877-279-5096

SE - 800-749-4067

SW - 800-357-7523

W - 877-213-5962



ALUMINUM LIMITED LIFETIME WARRANTY

SIDING ACCESSORIES

Norandex manufactures Aluminum Siding Accessories which include Trim Coil, Soffit, Fascia, Soffit Channels, Drip Cap, and Z-Flashings, in accordance with high standards and tight quality controls. The aluminum products will not rust, burn, support combustion, split, or crack due to cold weather.



BUY NORANDEX ALUMINUM SIDING ACCESSORIES WITH CONFIDENCE KNOWING THAT:

- Norandex aluminum siding accessories carry a Limited Lifetime Warranty.
- Material and Labor is covered.
- Transferable at no charge.
- Doesn't require registration.

WHAT DOES THIS WARRANTY COVER?

Norandex warrants to the owner of the property at the time the products were installed, that the products are free from defects in material and workmanship in the course of manufacture, and that the finish on the products will not chip, peel, flake, or blister under conditions of ordinary wear if installed according to local building codes and industry specifications. This warranty is limited to the terms and conditions, exclusions and limitations, requirements, and legal rights stated in this warranty.

HOW LONG DOES THE COVERAGE LAST?

If the property is individually owned, this Limited Lifetime Warranty lasts for the life of the property on which the products were originally applied for as long as the individual owns the property. If the property is not individually owned (e.g., corporation, condominium, cooperative housing arrangement, unincorporated association, school, church, government or public entity, etc.), the warranty period will be 50-years from the date of original installation of the products on the property, prorated as outlined in the Warranty Coverage Schedule contained within. This Limited Lifetime Warranty may be transferred with the property. However, upon the transfer, the warranty period will be no more than 50-years from the date of original installation of the products on the property, prorated in accordance with the Warranty Coverage Schedule contained within.

WHAT WILL NORANDEX DO?

Property owner must notify Norandex in accordance with the notice requirements outlined below to validate the complaint. In the event Norandex is denied access for an inspection, this warranty is null and void. Upon the notification and validation, Norandex will undertake the following: Norandex will repair, replace, or refund the purchase price of the defective portion of Norandex product that blisters, cracks, crazes, flakes, peels, or weathers unevenly due to a defect in the manufacturing process. Norandex obligations under this warranty will in no event exceed the purchase price of the originally installed products found to be warrantable and the cost of the labor involved in the original installation of such defective products. Any additional costs and expenses beyond these amounts are the property owner's responsibility. Norandex will not pay or be responsible for any costs associated with anything else affixed to the Norandex product.

In the event of repair, replacement, or refinishing, the warranty will extend only for the time remaining under the original warranty. Norandex will determine the reasonable labor costs to repair, repaint, or replace product under this warranty.

WHAT IS NOT COVERED UNDER THE WARRANTY?

This warranty does not cover damage of any kind resulting from:

- Uninstalled product that is stored in situations where standing water is covering the surface for a prolonged period of times.

- Faulty or improper contractor fabrication or installation, including waving, buckling, or other distortions.
- Installation of product in direct contact with dissimilar materials or salt spray.
- Cracking or crazing of the paint surface due to field forming of products in cold temperatures.
- Changes in surface color resulting from chalking, fading, soiling, tree sap, or staining. Exposure to the elements may cause these changes over time; the degree to which weathering occurs will vary depending on air quality, the building's location, and other local conditions over which Norandex has no control.
- Accidental damage.
- Settlement.
- Structural shrinkage or distortion of the property structure.
- Fire.
- Lightning, hurricane, tornado, windstorm, earthquake, hail, ice damage or other acts of God.
- Harmful chemicals including harmful cleaning compounds, herbicides, fertilizers, and pesticides.
- Fumes, volcanic smog, or vapors within 30-miles of volcano.
- Surface deterioration due to air pollution, use for animal confinement structures, or within a mile of seacoast and other bodies of saltwater.
- Misuse or abuse. Use of high pressure sprayers will void warranty.
- Vandalism.
- Airborne stains, mold and mildew accumulation.
- Tiger striping or atmospheric soil accumulation is a naturally occurring phenomenon that is not covered under the finish warranty.
- Failure of original or subsequent property owners to provide reasonable and necessary maintenance of the products (see "Care & Maintenance Instructions").
- Impact of foreign objects.
- Warping or distortion due to exposure to excessive heat sources (e.g., barbecue grills), or exposure to unusual or excessive reflective heat sources (e.g., window reflection).
- Products that have been painted, reinstalled, or whose surface has been altered in any way will void the paint finish warranty.
- Any other causes beyond Norandex reasonable control.

OTHER LIMITATIONS

1. This warranty covers only genuine Norandex aluminum siding accessories. It is the responsibility of the property owner to verify that the siding accessories installed are Norandex products. Norandex products are warranted in the continental United States, Hawaii, and Alaska.
2. Oil canning is a natural occurring phenomenon on the surface of soffit panels and is associated with the milling of thinner gauge Aluminum. Norandex guarantees these spans with specific thickness to be free of oil canning:
 - .012 2-Foot Spans
 - .019 6-Foot Spans
3. Due to normal weathering, replacement products may differ in gloss and color from products originally installed on the property.
4. Norandex reserve the right to discontinue or change any design or color of any products, at any time, and without notice or liability. If products of the type originally installed are no longer available, Norandex may substitute another product determined to be of comparable quality and price.

Continued on next page →

ACM Customer Service

MW / NE - 877-279-5096

SE - 800-749-4067

SW - 800-357-7523

W - 877-213-5962



STEEL LIMITED LIFETIME WARRANTY GUTTER SYSTEM PRODUCTS

Norandex manufactures Steel Gutter System Products including gutter coil in accordance with high standards and tight quality controls. The products will not burn, support combustion, or split, or crack due to cold weather because they are made of steel.



BUY NORANDEX STEEL GUTTER SYSTEM PRODUCTS WITH CONFIDENCE KNOWING THAT:

- Norandex Steel Gutter System products carry a Limited Lifetime Warranty.
- Material and Labor is covered.
- Doesn't require registration.

WHAT DOES THIS WARRANTY COVER?

Norandex warrants to the owner of the property at the time the products were installed, that the products are free from defects in material and workmanship in the course of manufacture, and that the finish on the products will not chip, peel, flake, or blister under conditions of ordinary wear if installed according to local building codes and industry specifications. This warranty excludes any areas of the material that are within 3/4" of any edge that has been cut subsequent to the application of the paint to the substrate. This warranty is limited to the terms and conditions, exclusions and limitations, requirements, and legal rights stated in this warranty.

HOW LONG DOES THE COVERAGE LAST?

If the property is individually owned, this Limited Lifetime Warranty lasts for the life of the property on which the products were originally applied for as long as the individual owns the property. If not individually owned (e.g., corporation, condominium, cooperative housing arrangement, unincorporated association, school, church, government or public entity, etc.), the warranty period will be 50-years from the date of original installation of the products on the property, prorated as outlined in the Warranty Coverage Schedule contained within. This Limited Lifetime Warranty is limited to the original owner. Coverage will be 100% for 10-years after the installation and prorated after that period. See Warranty Coverage Schedule section for details of prorated coverage.

WHAT WILL NORANDEX DO?

Property owner must notify Norandex in accordance with the notice requirements outlined below to validate the complaint. In the event the manufacturer is denied access for an inspection, this warranty is null and void. Upon the notification and validation, Norandex will undertake the following: Norandex will repair, replace, or refund the purchase price of the defective portion of the product that blisters, cracks, crazes, flakes, peels, or weathers unevenly due to a defect in the manufacturing process. Norandex obligations under this warranty will in no event exceed the purchase price of the originally installed products found to be warrantable and the cost of the labor involved in the original installation of such defective products. Any additional costs and expenses beyond these amounts are the property owner's responsibility. Norandex will not pay or be responsible for any costs associated with anything else affixed to the Norandex product.

In the event of repair, replacement, or refinishing, the warranty will extend only for the time remaining under the original warranty. Norandex will determine the reasonable labor costs to repair, repaint, or replace product under this warranty.

WHAT IS NOT COVERED UNDER THE WARRANTY?

This warranty does not cover damage of any kind resulting from:

- Product that is stored in situations where standing water is covering the surface for prolonged period of time.
- Faulty or improper installation, including "oil canning", waving, buckling, or other distortions.
- Installation of Norandex product in direct contact with dissimilar materials, salt spray, and cedar shake roofing.
- Cracking or crazing of the Product's paint surface due to field forming of products in cold temperatures; or material that has bends less than 2T for a sheet thickness of 0.0299" and thinner and bends less than 4T for a sheet thickness of 0.0300" and thicker.
- Changes in surface color resulting from chalking, fading, soiling, tree sap, or staining. Exposure to the elements may cause these changes over time; the degree to which weathering occurs will vary depending on air quality, the building's location, and other local conditions over which Norandex has no control.
- Accidental damage.
- Settlement.
- Structural shrinkage or distortion of the property structure.
- Fire.
- Lightning, hurricane, tornado, windstorm, earthquake, hail, ice damage or other acts of God.
- Harmful chemicals including harmful cleaning compounds, herbicides, fertilizers, and pesticides.
- Fumes, volcanic smog, or vapors within 30-miles of volcano.
- Surface deterioration due to air pollution, use for animal confinement structures, or within 1-mile of seacoast and other bodies of saltwater.
- Misuse or abuse. Use of high pressure sprayers will void warranty.
- Vandalism.
- Airborne stains, mold and mildew accumulation.
- Tiger striping or atmospheric soil accumulation is a naturally occurring phenomenon that is not covered under the finish warranty.
- Failure of original property owner to provide reasonable and necessary maintenance of the products (see "Care & Maintenance Instructions").
- Impact of foreign objects.
- Warping or distortion due to exposure to excessive heat sources (e.g., barbecue grills) or exposure to unusual or excessive reflective heat sources (e.g., window reflection).
- Products that have been painted, reinstalled, or whose surface has been altered in any way will void the paint finish warranty.
- Any other causes beyond Norandex reasonable control.

Continued on next page →

ACM Customer Service

MW / NE - 877-279-5096

SE - 800-749-4067

SW - 800-357-7523

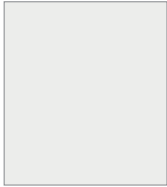
W - 877-213-5962



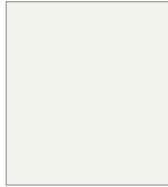
NORANDEX™

EXTERIOR PRODUCTS FOR YOUR HOME

West Coast Rainware Colors



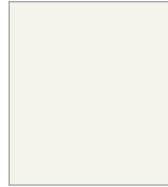
Frost - FR



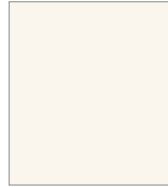
★ 30 Deg. White - WH



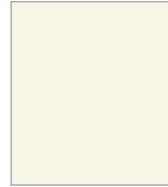
50 Deg. White - 50



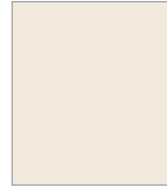
80 Deg. White - 80



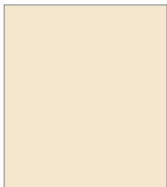
NX Linen - LN



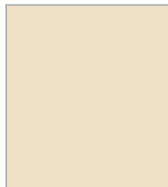
NX Almond - AD



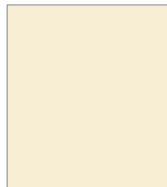
Linen - LI



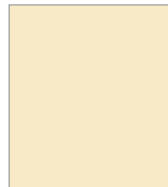
Cameo - CA



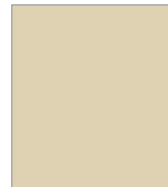
Almond - AL



Heritage Cream - HC



★ Classic Cream - CC



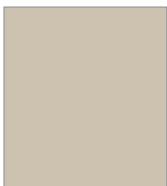
Wheat - WT



Sandtone - ST



★ Desert Sand - DS



NX Sand Stone - SS



★ Wicker - WI



NX Sierra - SI



Norwegian Wood - NW



★ Pebblestone Clay - PC



Montana Suede - MS



Terra Bronze - TB



Rustic Copper - M2 (prem. color)



Copper Penny - CP



Bronze - BZ



★ Harvest Brown - HV



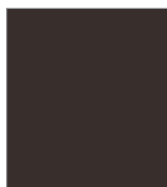
Musket Brown - MB



★ Royal Brown - RB



★ Beaver Brown - BB



Weathered Bronze - WB



Buckskin - BU



★ Black - BK



Spanish Green - SP



Marine Green - MR



★ Redwood - RW



Rosewood - RS



★ Charcoal Grey - CG



★ Harbor Grey - HG



★ Victorian Grey - VG



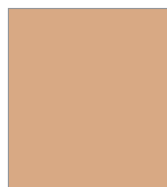
★ Tahoe Blue - TA



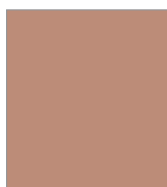
★ Country Blue - CU



Sea Blue - S7



Peach - PH



Desert Mauve - DM

★ Available in Steel

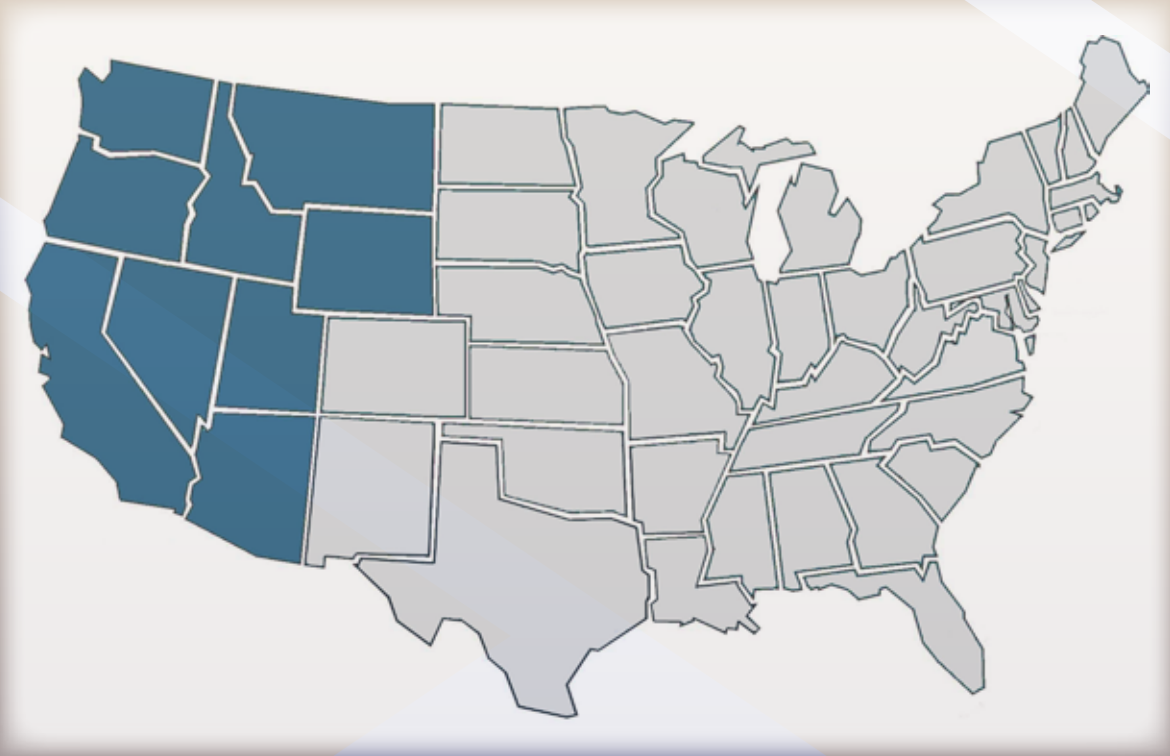
Note: Please refer to metal color swatches for color accuracy. Color appearance may change when viewed at different angles or in sunlight.

PROUDLY FINISHED WITH
SHERWIN-WILLIAMS®
Coil Coatings



NORANDEX™

EXTERIOR PRODUCTS FOR YOUR HOME



Lodi Plant Serves West Coast Regions