

# EDGE METALS



*Shawnee Plant*  
**PRODUCT CATALOG**

[www.acm-metals.com](http://www.acm-metals.com)

*Shawnee Plant*  
**EDGE METALS CATALOG**

**Table of Contents**

<b>Angle Flashing</b> .....	<b>2</b>	<b>Gravel Stop</b> .....	<b>8</b>
Standard .....	2	<b>Gutter Apron</b> .....	<b>8</b>
No Kick (Color Outside) .....	2	<b>Rain Diverter</b> .....	<b>9</b>
No Kick (Color Inside) .....	2	<b>J-Flashing</b> .....	<b>9</b>
<b>Dual Safety Hem Drip Edge</b> .....	<b>3</b>	<b>Reglet Flashing</b> .....	<b>9</b>
<b>C-Channel</b> .....	<b>3</b>	<b>Counter Flashing</b> .....	<b>9</b>
<b>Drip Edge</b> .....	<b>4-6</b>	<b>T-Bar</b> .....	<b>10</b>
Professional (Closed Face) .....	4	<b>Flat Sheet</b> .....	<b>10</b>
Standard (Closed Face) .....	4	<b>Flat Shingle</b> .....	<b>10</b>
Professional (Open Face) .....	5	<b>Pre-Bent Step Flashing</b> .....	<b>11-12</b>
F-8 Large (Open Face).....	5	<b>Roll Valley</b> .....	<b>13</b>
26 Gauge Galvanized (Open Face) .....	5	<b>Roof to Wall Flashing</b> .....	<b>14</b>
Builders.....	6	<b>Side Wall Flashing</b> .....	<b>14</b>
Economy .....	6	<b>Tile Pan Flashing</b> .....	<b>14</b>
<b>Drip Edge/Eave</b> .....	<b>6</b>	<b>W-Valley &amp; W-Valley Professional</b> .....	<b>15</b>
<b>Rake Edge 90°</b> .....	<b>6-7</b>	<b>Warranties</b> .....	<b>16-17</b>
Professional .....	6		
Professional 2-3/4" Back Crown Face.....	6		
Standard .....	7		
<b>T Rake Edge</b> .....	<b>8</b>		

PROUDLY FINISHED WITH  
**SHERWIN-WILLIAMS.**  
*Coil Coatings*

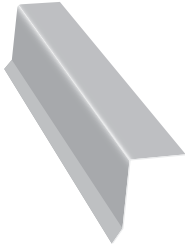
*We reserve the right to change the content of product offerings at any time. Please consult the online catalog at [www.acm-metals.com](http://www.acm-metals.com) for the most update product offering.*

**Contact Information:**

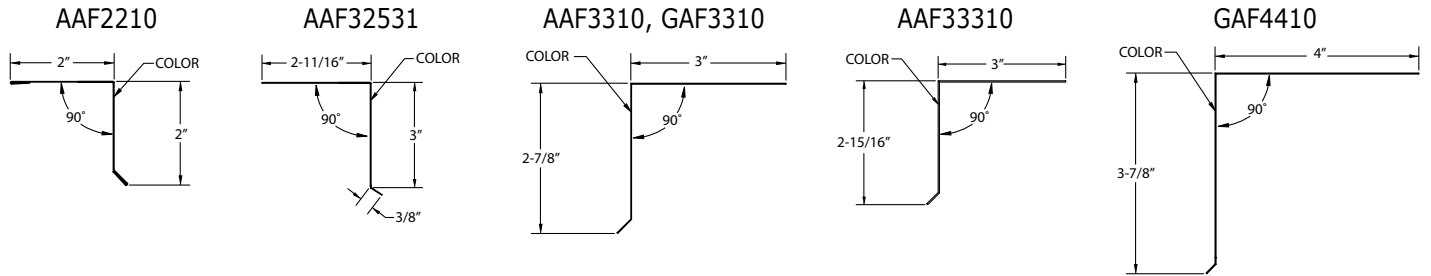
**CUSTOMER SERVICE: Ph 877-279-5096 • Fax 608-365-0493**  
**[www.acm-metals.com](http://www.acm-metals.com)**



**Angle Flashing**

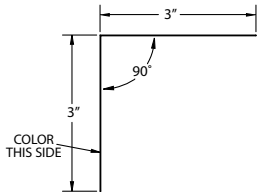


Part #	Description	Colors	Nom. Gauge/ Thickness	Piece Length	Pieces/ Box	Boxes/ Pallet	Pieces/ Pallet
<b>Standard</b>							
AAF2210 - -	Alum. 2 x 2 Std. Angle Flash. (C4)	RB, WH	0.019	10'	25	35	875
AAF32531WH	Alum. 2-5/8 x 3 Std. Angle Flash.	WH	0.032	10'	25	35	875
AAF3310 - -	Alum. 3 x 3 Std. Angle Flash. (C5-1/2)	BK, RB, WH	0.019	10'	25	35	875
AAF33310 - -	Alum. 3 x 3 Std. Angle Flash. (C6)	RB, WH	0.032	10'	25	35	875
AAF33310ML	Alum. 3 x 3 Std. Angle Flash. (C6)	Mill	0.032	10'	25	35	875
GAF25410WH	Galv. 2-1/2 x 4 Std. Angle Flash.	WH	26 ga	10'	10	35	350
GAF25410ML	Galv. 2-1/2 x 4 Std. Angle Flash.	Mill	26 ga	10'	10	35	350
GAF3310 - -	Galv. 3 x 3 Std. Angle Flash. (C6)	AL, BK, RB, TB, WH	26 ga	10'	10	35	350
GAF3310ML	Galv. 3 x 3 Std. Angle Flash. (C6)	Mill	26 ga	10'	10	35	350
GAF4410 - -	Galv. 4 x 4 Std. Angle Flash. (C7)	BK, RB, TB, WH	26 ga	10'	10	35	350
GAF4410ML	Galv. 4 x 4 Std. Angle Flash. (C7)	Mill	26 ga	10'	10	35	350
GAF6610 - -	Galv. 6 x 6 Std. Angle Flash.	BK, RB, TB, WH	26 ga	10'	10	35	350

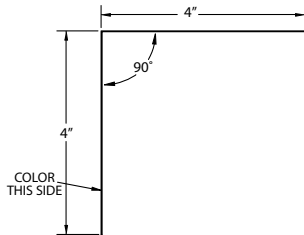


**No Kick (Color Outside)**

AAFN3310, GAFN3310

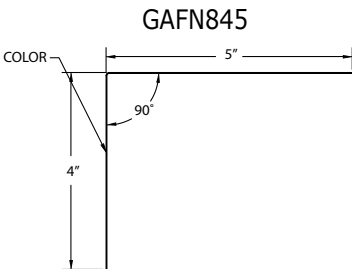


GAFN4410

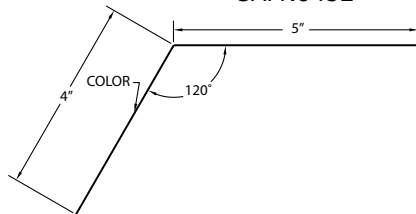


AAFN2210 - -	Alum. 2 x 2 N/K Angle Flash.	RB, WH	0.019	10'	10	35	350
AAFN3310WH	Alum. 3 x 3 N/K Angle Flash. (E6)	WH	0.019	10'	10	35	350
GAFN3310 - -	Galv. 3 x 3 N/K Angle Flash. (E6)	RB, WH	26 ga	10'	10	35	350
GAFN3310ML	Galv. 3 x 3 N/K Angle Flash. (E6)	Mill	26 ga	10'	10	35	350
GAFN4410 - -	Galv. 4 x 4 N/K Angle Flash. (E8)	BK, RB, WH	26 ga	10'	10	35	350
GAFN4410ML	Galv. 4 x 4 N/K Angle Flash. (E8)	Mill	26 ga	10'	10	35	350
GAFN845 - -	Galv. 4 x 5 N/K Angle Flash.	RB, WH	28 ga	10'	10	35	350
GAFN845ML	Galv. 4 x 5 N/K Angle Flash.	Mill	28 ga	10'	10	35	350
GAFN8452 - -	Galv. 4 x 5 N/K Angle Flash. 120°	RB, WH	28 ga	10'	10	35	350
GAFN8452ML	Galv. 4 x 5 N/K Angle Flash. 120°	Mill	28 ga	10'	10	35	350

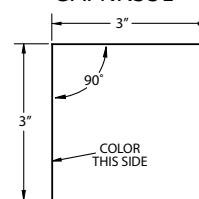
**No Kick (Color Inside)**



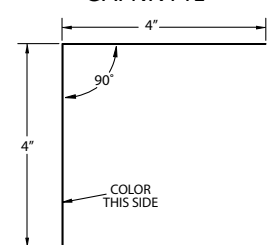
GAFN8452



GAFNR331



GAFNR441



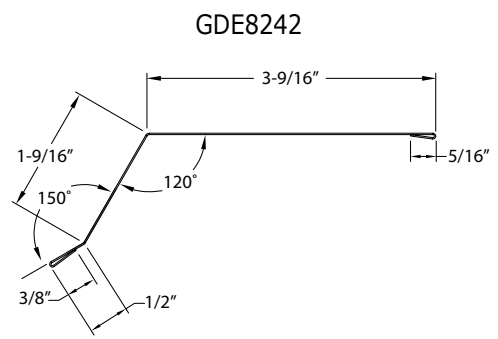
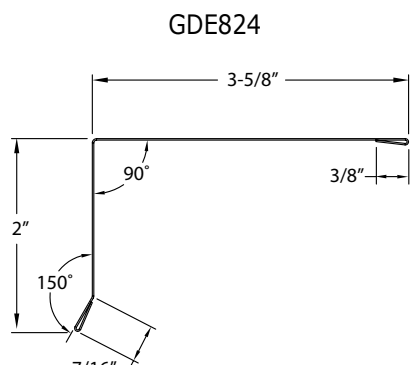
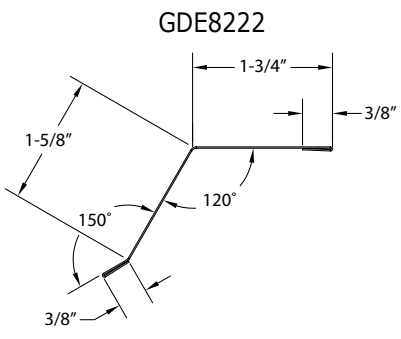
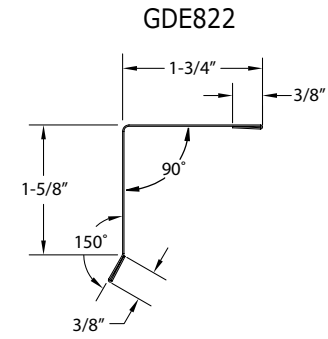
GAFNR331 - -	Galv. 3 x 3 N/K Angle Flash. Rev. Color (E8)	BK, TB	26 ga	10'	10	35	350
GAFNR441 - -	Galv. 4 x 4 N/K Angle Flash. Rev. Color (E8)	BK, TB	26 ga	10'	10	35	350
GAFNR441ML	Galv. 4 x 4 N/K Angle Flash. Rev. Color (E8)	Mill	26 ga	10'	10	35	350
GAFNR845 - -	Galv. 4 x 5 N/K Angle Flash. Rev. Color (E8)	RB, WH	26 ga	10'	10	35	350
GAFNR845ML	Galv. 4 x 5 N/K Angle Flash. Rev. Color (E8)	Mill	26 ga	10'	10	35	350

**Edge Metal Colors**

COLOR	CODE	COLOR	CODE	COLOR	CODE	COLOR	CODE	COLOR	CODE
ALMOND	AL	BLACK	BK	ROYAL BROWN	RB	TERRA BRONZE	TB	WHITE	WH

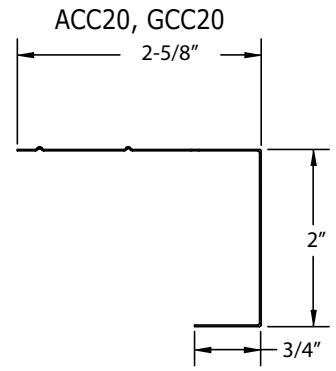
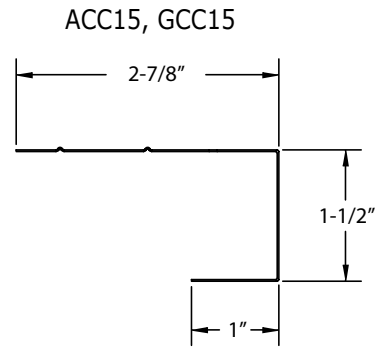
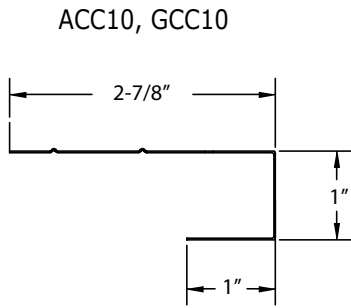
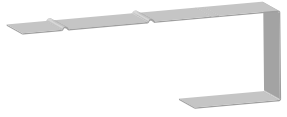
**Dual Safety Hem Drip Edge**

Part #	Description	Colors	Nom. Gauge/ Thickness	Piece Length	Pieces/ Bundle	Bundles/ Pallet	Pieces/ Pallet
GDE822 - -	Galv. 2 x 2, 90° Dual Safety Hem DE	(Listed Below)	28 ga	10'	10	68	680
GDE822ML	Galv. 2 x 2, 90° Dual Safety Hem DE	Mill	28 ga	10'	10	68	680
GDE8222 - -	Galv. 2 x 2, 120° Dual Safety Hem DE	(Listed Below)	28 ga	10'	10	68	680
GDE8222ML	Galv. 2 x 2, 120° Dual Safety Hem DE	Mill	28 ga	10'	10	68	680
GDE824 - -	Galv. 2 x 4, 90° Dual Safety Hem DE	(Listed Below)	28 ga	10'	10	40	400
GDE824ML	Galv. 2 x 4, 90° Dual Safety Hem DE	Mill	28 ga	10'	10	40	400
GDE8242 - -	Galv. 2 x 4, 120° Dual Safety Hem DE	(Listed Below)	28 ga	10'	10	40	400
GDE8242ML	Galv. 2 x 4, 120° Dual Safety Hem DE	Mill	28 ga	10'	10	40	400



**C-Channel**

Part #	Description	Colors	Nom. Gauge/ Thickness	Piece Length	Pieces/ Box	Boxes/ Pallet	Pieces/ Pallet
ACC10 - -	Alum. 1" C-Channel	BK, RB, TB, WH	0.019	10'	25	24	600
ACC15 - -	Alum. 1-1/2" C-Channel	BK, RB, TB, WH	0.019	10'	25	24	600
ACC20 - -	Alum. 2" C-Channel	BK, RB, TB, WH	0.019	10'	25	12	300
GCC10 - -	Galv. 1" C-Channel	BK, RB, TB, WH	28 ga	10'	25	24	600
GCC10ML	Galv. 1" C-Channel	Mill	28 ga	10'	25	24	600
GCC15 - -	Galv. 1-1/2" C-Channel	BK, RB, TB, WH	28 ga	10'	25	24	600
GCC20 - -	Galv. 2" C-Channel	BK, RB, TB, WH	28 ga	10'	25	24	600
GCC20ML	Galv. 2" C-Channel	Mill	28 ga	10'	25	24	600

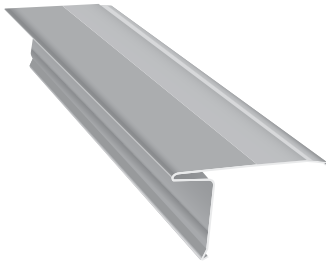


**Edge Metal Colors:**

COLOR	CODE	COLOR	CODE	COLOR	CODE	COLOR	CODE
ALMOND	AL	COUNTRY BLUE	CU	ROYAL BROWN	RB	TERRA BRONZE	TB
BLACK	BK	EVERGREEN	EG	REDWOOD	RW	WHITE	WH
CHARCOAL GREY	CG	HARBOR GREY	HG				

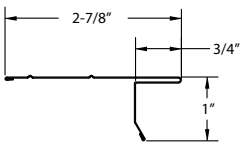


**Drip Edge**

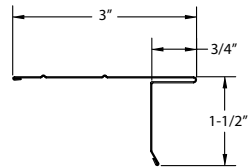


Part #	Description	Colors	Nom. Gauge/ Thickness	Piece Length	Pieces/ Box	Boxes/ Pallet	Pieces/ Pallet
<b>Professional - Closed Face</b>							
• ADE10 - -	Alum. 1" Face w/2-7/8" Back DE (F5)	(Listed Below)	0.019	10'	50	24	1200
<b>*Also available in Montana Suede XMS.</b>							
• ADE15 - -	Alum. 1-1/2" Face w/3" Back DE (F5)	(Listed Below)	0.019	10'	50	24	1200
ADE15ML	Alum. 1-1/2" Face w/3" Back DE (F5)	Mill	0.019	10'	50	24	1200
• ADE185 - -	Alum. 1-3/4" Face w/2-5/16" Back DE	(Listed Below)	0.019	10'	50	24	1200
ADE185ML	Alum. 1-3/4" Face w/2-5/16" Back DE	Mill	0.019	10'	50	24	1200
ADE2415WH	Alum. 1-1/2" Face w/3" Back DE (F5)	WH	0.024	10'	25	24	600
GDE10 - -	Galv. 1" Face w/2-7/8" Back DE (F5)	BK, RB, TB, WH	28 ga	10'	25	24	600
GDE10ML	Galv. 1" Face w/2-7/8" Back DE (F5)	Mill	28 ga	10'	25	24	600
GDE15 - -	Galv. 1-1/2" Face w/3" Back DE	BK, RB, TB, WH	30 ga	10'	25	24	600
GDE15ML	Galv. 1-1/2" Face w/3" Back DE	Mill	30 ga	10'	25	24	600
GDE20 - -	Galv. 2" Face w/3" Back DE (ODE)	BK, RB, TB, WH	28 ga	10'	25	24	600
GDE20ML	Galv. 2" Face w/3" Back DE(ODE)	Mill	28 ga	10'	25	24	600
GDE2610 - -	Galv. 1" Closed Face w/2-7/8" Back DE	BK, NW, RB, TB, WH	26 ga	10'	20	24	480
GDE2615 - -	Galv. 1-1/2" Closed Face w/2-7/8" Back DE	BK, NW, RB, TB, WH	26 ga	10'	20	18	480
GDE2615ML	Galv. 1-1/2" Closed Face w/2-7/8" Back DE	Mill	26 ga	10'	20	18	480
GDE2622ML	Galv. 2 x 2 Closed Face DE	Mill	26 ga	10'	25	18	240
CDE10	Copper 1" Face w/2-7/8" Back DE	Copper	16 oz	10'	10	Order by the pc.	
CDE15	Copper 1-1/2" Face w/3" Back DE	Copper	16 oz	10'	10	Order by the pc.	

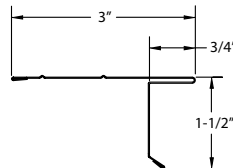
ADE10, GDE10, CDE10



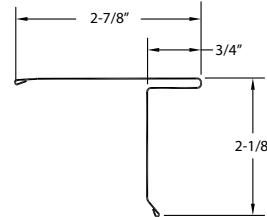
ADE15, GDE15, CDE15



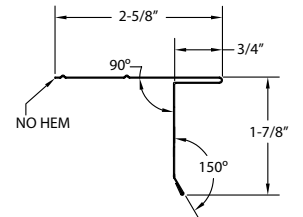
ADE2415



GDE20



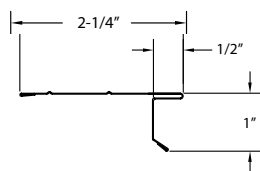
ADE185



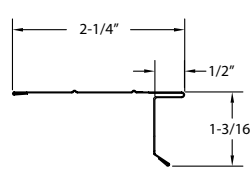
**Standard - Closed Face**

SADE10 - -	Alum. 1" Face DE (F4-1/2)	BK, RB, TB, WH	0.019	10'	50	24	1200
SADE125 - -	Alum. 1-1/4" Face DE	BK, MB, RB, TB, VG, WH	0.019	10'	50	24	1200
SADE15 - -	Alum. 1-1/2" Face DE (F5M)	BK, RB, TB, WH	0.019	10'	50	24	1200
SADE15ML	Alum. 1-1/2" Face DE (F5M)	Mill	0.019	10'	50	24	1200
SADE185 - -	Alum. 1-7/8" Face DE (ODE)	AL, BZ, BK, MB, MS, RB, SI, TB, WH	0.019	10'	50	24	1200
SADE185ML	Alum. 1-7/8" Face DE (ODE)	Mill	0.019	10'	50	24	1200
SGDE10 - -	Galv. 1" Face DE (F4-1/2)	BK, RB, TB, WH	28 ga	10'	25	24	600
SGDE10ML	Galv. 1" Face DE (F4-1/2)	Mill	28 ga	10'	25	24	600
SGDE125 - -	Galv. 1-1/4" Face DE	BK, RB, TB, WH	28 ga	10'	25	24	600
SGDE125ML	Galv. 1-1/4" Face DE	Mill	28 ga	10'	25	24	600
SGDE15 - -	Galv. 1-1/2" Face DE F5M	BK, RB, TB, WH	30 ga	10'	25	24	600
SGDE15ML	Galv. 1-1/2" Face DE (F5M)	Mill	30 ga	10'	25	24	600
SGDE185 - -	Galv. 1-7/8" Face DE (ODE)	BK, RB, TB, WH	28 ga	10'	25	24	600
SGDE185ML	Galv. 1-7/8" Face DE (ODE)	Mill	28 ga	10'	25	24	600

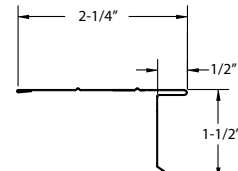
SADE10, SGDE10



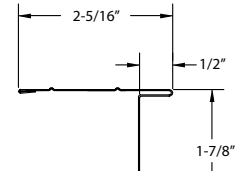
SADE125, SGDE125



SADE15, SGDE15



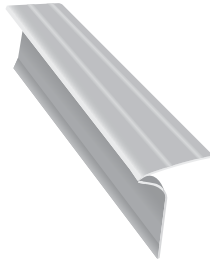
SADE185, SGDE185



**Edge Metal Colors / •=Color-Thru System™**

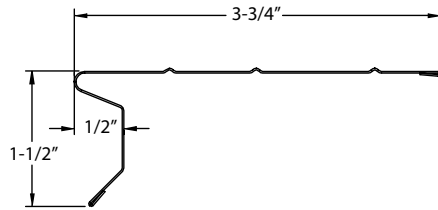
COLOR	CODE	COLOR	CODE	COLOR	CODE	COLOR	CODE	COLOR	CODE
• NX ALMOND	D49	• NX CHAMPAGNE	D53	• NX GRANITE	A19	• REDWOOD	RW	• SILVER GREY	SG
• ALMOND	AL	• CHARCOAL GREY	CG	• HARBOR GREY	HG	• NX RUSSET	B18	• NX TAN	D48
• BEAVER BROWN	BB	• CLASSIC CREAM	CC	• NX LINEN	W10	• ROYAL BROWN	RB	• TERRA BRONZE	TB
• BLACK	BK	• COUNTRY BLUE	CU	• LINEN	LI	• SAGE	SA	• VICTORIAN GREY	VG
• BRONZE	BZ	• DESERT SAND	DS	• MONTANA SUEDE	XMS	• NX SAND	D51	• WHITE	WH
• BROOKSTONE	BS	• NX DUNE	D54	• MUSKET BROWN	MB	• NX SAND STONE	D46	• WICKER	WI
• BUCKSKIN	BU	• EVEREST	EV	• NORWEGIAN WOOD	NW	• NX SIERRA CLAY	D47		
• CAMEO	CA	• EVERGREEN	EG	• PEBBLESTONE CLAY	PC				

**Drip Edge cont.**

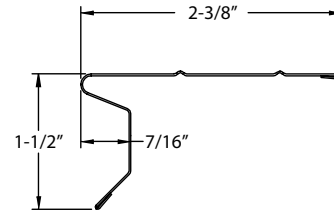


Part #	Description	Colors	Nom. Gauge/ Thickness	Piece Length	Pieces/ Box	Boxes/ Pallet	Pieces/ Pallet
<b>Professional - Open Face</b>							
ADEOF10 - -	Alum. 1-1/2" Open Face w/3-3/4" Back DE (F5-1/20)	BK, RB, TB, WH	0.019	10'	50	24	1200
ADEOF10ML	Alum. 1-1/2" Open Face w/3-3/4" Back DE (F5-1/20)	Mill	0.019	10'	50	24	1200
ADEOF415 - -	Alum. 1-1/2" Open Face w/2-3/8" Back DE (F50)	BK, RB, TB, WH	0.019	10'	50	24	1200
ADEOF415ML	Alum. 1-1/2" Open Face w/2-3/8" Back DE (F50)	Mill	0.019	10'	50	24	1200
GDEOF10 - -	Galv. 1-1/2" Open Face w/3-3/4" Back DE (F5-1/20)	RB, WH	28 ga	10'	25	32	800
GDEOF10ML	Galv. 1-1/2" Open Face w/3-3/4" Back DE (F5-1/20)	Mill	28 ga	10'	25	32	800
GDEOF415 - -	Galv. 1-1/2" Open Face w/2-3/8" Back DE (F50)	BK, RB, TB, WH	28 ga	10'	25	32	800
GDEOF415ML	Galv. 1-1/2" Open Face w/2-3/8" Back DE (F50)	Mill	28 ga	10'	25	32	800

ADEOF10, GDEOF10



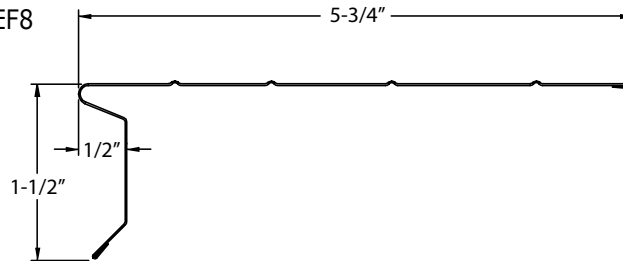
ADEOF415, GDEOF415



**F-8 Large - Open Face**

EADef8 - -	Econ. Alum. 1-1/2" Open Face DE (F8)	RB, WH	0.015	10'	25	24	600
ADEF8 - -	Alum. 1-1/2" Open Face w/5-3/4" Back DE (F8)	BK, RB, TB, WH	0.019	10'	25	24	600
ADEF8ML	Alum. 1-1/2" Open Face w/5-3/4" Back DE (F8)	Mill	0.019	10'	25	24	600
GDEF8 - -	Galv. 1-1/2" Open Face w/5-3/4" Back DE (F8)	BK, RB, TB, WH	28 ga	10'	15	24	360
GDEF8ML	Galv. 1-1/2" Open Face w/5-3/4" Back DE (F8)	Mill	28 ga	10'	15	24	360

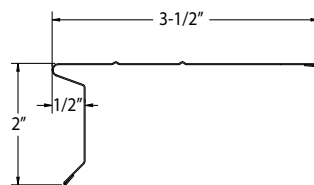
EADef8, ADEF8, GDEF8



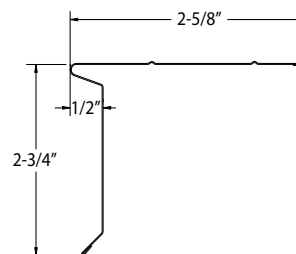
**26 Gauge Galvanized - Open Face**

GDEOF615 - -	Galv. 2" Open Face w/3-1/2" Back DE	BK, RB, TB, WH	26 ga	10'	20	24	480
GDEOF615ML	Galv. 2" Open Face w/3-1/2" Back DE	Mill	26 ga	10'	20	24	480
GDEOF625 - -	Galv. 2-3/4" Open Face w/2-5/8" Back DE	BK, RB, TB, WH	26 ga	10'	20	24	480
GDEOF625ML	Galv. 2-3/4" Open Face w/2-5/8" Back DE	Mill	26 ga	10'	20	24	480
GDEOF630 - -	Galv. 3-1/4" Open Face w/2-9/16" Back DE	BK, RB, TB, WH	26 ga	10'	20	24	480
GDEOF630ML	Galv. 3-1/4" Open Face w/2-9/16" Back DE	Mill	26 ga	10'	20	24	480

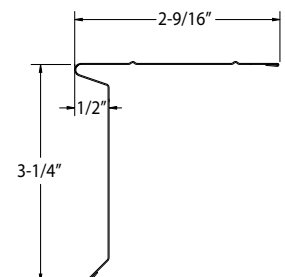
GDEOF615



GDEOF625



GDEOF630

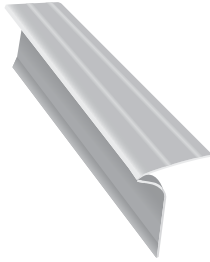


**Edge Metal Colors:**

COLOR	CODE	COLOR	CODE	COLOR	CODE	COLOR	CODE
BLACK	BK	ROYAL BROWN	RB	TERRA BRONZE	TB	WHITE	WH

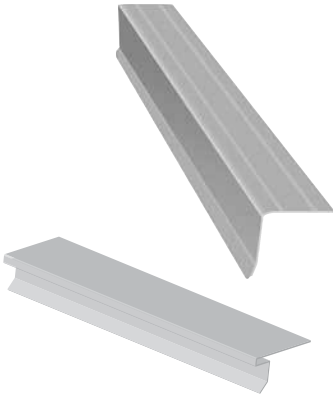
**Drip Edge cont.**

Part #	Description	Colors	Nom. Gauge/ Thickness	Piece Length	Pieces/ Bundle	Pieces/ Pallet
<b>Economy</b>						
EADOF41 - -	Econ. Alum. 1" Open Face DE (F50)	BK, RB, WH	0.015	10'	50	12 600

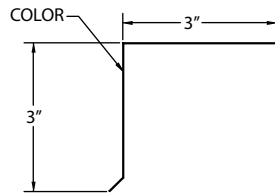


**Drip Edge / Eave**

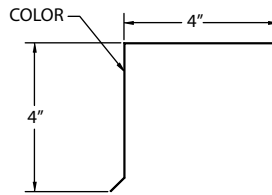
Part #	Description	Colors	Nom. Gauge/ Thickness	Piece Length	Pieces/ Bundle	Pieces/ Pallet
GDE2633ML	Galv. 3 x 3 Press Brake Eave	Mill	26 ga	10'	25	1500
GDE2844ML	Galv. 4 x 4 Press Brake Eave	Mill	28 ga	10'	25	2250
GDE3012 - -	Galv. 1 x 2 Eave	WH	30 ga	10'	25	1500
GDE3022 - -	Galv. 2 x 2 Eave	AL, BK, BR, LG, RB, TN, TB, WH	30 ga	10'	25	2250
GDE3022ML	Galv. 2 x 2 Standard Roof Edge	Mill	30 ga	10'	25	2250
GDE3212ML	Galv. 1 x 2 x 10' Econ. Roof Edge	Mill	32 ga	10'	25	2250
GDEDL30 - -	Galv. DL Long Eave	AL, BK, BR, LG, RB, TN, TB, WH	30 ga	10'	25	1500
GDEDL30ML	Galv. DL Long Premium Eave	Mill	30 ga	10'	25	1500
GDEDLW30 - -	Galv. DL Long Woodgrain Eave	AL, BK, BR, LG, RB, TN, TB, WH	30 ga	10'	25	1500
GDEDW30 - -	Galv. DL Short Woodgrain Eave	AL, BK, BR, LG, RB, TN, TB, WH	30 ga	10'	25	1500
GDEW3022 - -	Galv. 2 x 2 Woodgrain Eave	AL, BK, BR, LG, RB, TN, TB, WH	30 ga	10'	25	1500
GEE112 - -	Galv. 1-1/2 Econ. Eave	AL, BK, BR, LG, RB, TN, TB, WH	32 ga	10'	25	2500



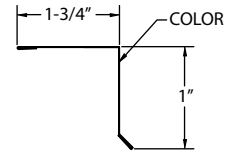
GDE2633ML



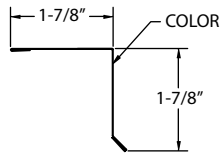
GDE2844ML



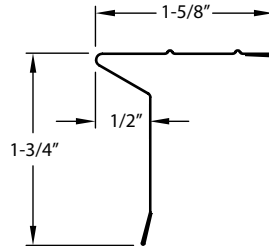
GDE3012



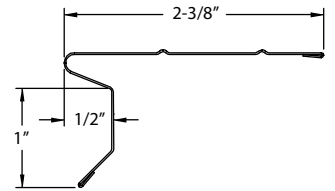
GDE3022, GDE3022ML



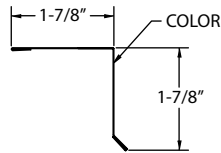
GDEDL30, GDEDL30ML



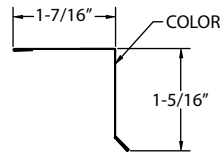
GDEDW30



GDEW3022



GEE112



**Edge Metal Colors:**

COLOR	CODE	COLOR	CODE	COLOR	CODE	COLOR	CODE
ALMOND	AL	BROWN	BR	ROYAL BROWN	RB	TERRA BRONZE	TB
BLACK	BK	LIGHT GRAY	LG	TAN	TN	WHITE	WH



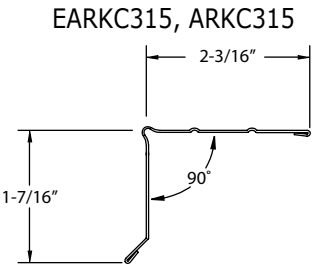
**Rake Edge 90°**



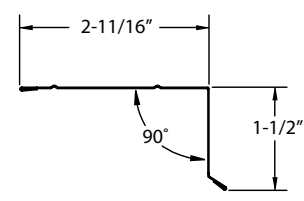
Part #	Description	Colors	Nom. Gauge/ Thickness	Piece Length	Pieces/ Box	Boxes/ Pallet	Pieces/ Pallet
--------	-------------	--------	-----------------------	--------------	-------------	---------------	----------------

**Professional**

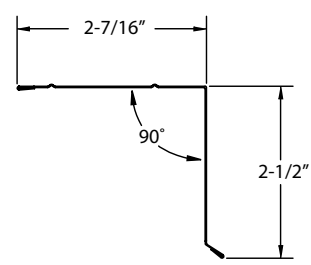
EARKC315 - -	Econ. Alum. 1-1/2" Crown Fc w/2-3/16" Back (C3-1/2)	RB, WH	0.015	10'	50	32	1600
ARK15 - -	Alum. 1-1/2" Face w/2-11/16" Back DE	BK, RB, TB, WH	0.019	10'	50	32	1600
ARK25 - -	Alum. 2-1/2" Face w/2-7/16" Back DE (C5-1/2)	RB, WH	0.019	10'	50	32	1600
ARKC315 - -	Alum. 1-1/2" Crown Fc w/2-3/16" Back DE (C3-1/2)	RB, WH	0.019	10'	50	32	1600
GRK10 - -	Galv. 1" Face w/2-3/4" Back DE	BK, RB, TB, WH	28 ga	10'	25	32	800
GRK10ML	Galv. 1" Face w/2-3/4" Back DE	Mill	28 ga	10'	25	32	800
GRK15 - -	Galv. 1-1/2" Face w/2-11/16" Back DE	BK, RB, TB, WH	28 ga	10'	25	32	800
GRK15ML	Galv. 1-1/2" Face w/2-11/16" Back DE	Mill	28 ga	10'	25	32	800
GRK25 - -	Galv. 2-1/2" Face w/2-7/16" Back DE (C5-1/2)	BK, RB, TB, WH	28 ga	10'	25	32	800
GRK25ML	Galv. 2-1/2" Face w/2-7/16" Back DE (C5-1/2)	Mill	28 ga	10'	25	32	800



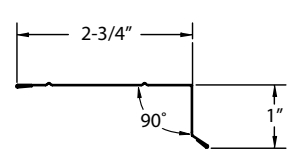
ARK15, GRK15



ARK25, GRK25



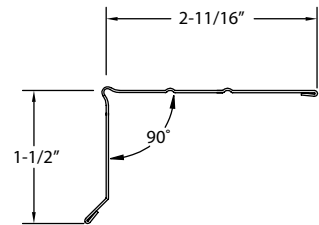
GRK10



**Professional 2-3/4" Back Crown Face**

ARKC415 - -	Alum. 1-1/2" Crown Face DE (C4-1/2)	RB, WH	0.019	10'	50	32	1600
ARKC415ML	Alum. 1-1/2" Crown Face DE (C4-1/2)	Mill	0.019	10'	50	32	1600

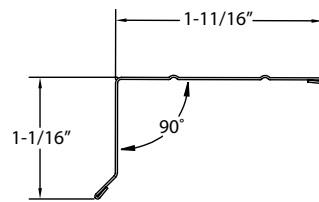
ARKC415



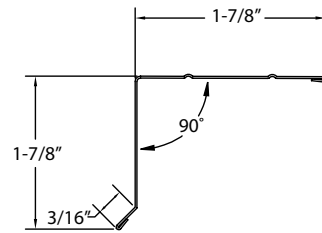
**Standard**

SARK10 - -	Alum. 1" Std. Face w/1-11/16" Back DE	BK, RB, TB, WH	0.019	10'	50	32	1600
SARK20 - -	Alum. 2" Std. Face w/1-7/8" Back DE (C4)	BK, RB, TB, WH	0.019	10'	50	32	1600
SARK25 - -	Alum. 2-1/2" Std. Face w/2-1/16" Back DE	RB, WH	0.019	10'	50	32	1600
SGRK10 - -	Galv. 1" Std. Face w/1-11/16" Back DE	BK, RB, TB, WH	28 ga	10'	25	32	800
SGRK10ML	Galv. 1" Std. Face w/1-11/16" Back DE	Mill	28 ga	10'	25	32	800
SGRK20 - -	Galv. 2" Std. Face w/1-7/8" Back DE (C4)	BK, RB, TB, WH	28 ga	10'	25	32	800
SGRK20ML	Galv. 2" Std. Face w/1-7/8" Back DE (C4)	Mill	28 ga	10'	25	32	800

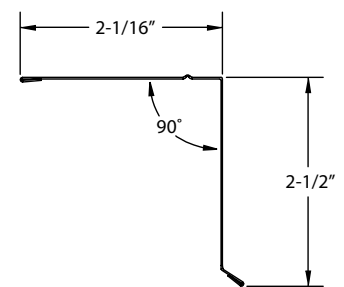
SARK10, SGRK10



SARK20, SGRK20



SARK25

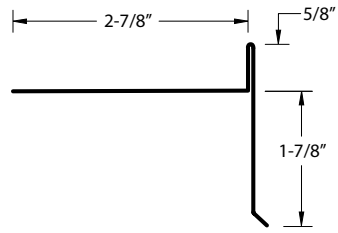


**Edge Metal Colors:**

COLOR	CODE	COLOR	CODE	COLOR	CODE	COLOR	CODE
BLACK	BK	ROYAL BROWN	RB	TERRA BRONZE	TB	WHITE	WH

**T Rake Edge**

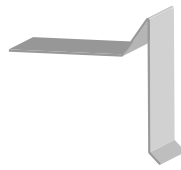
Part #	Description	Colors	Nom. Gauge/ Thickness	Piece Length	Pieces/ Box	Boxes/ Pallet	Pieces/ Pallet
GTRE175**	Galvanized 1-7/8" Face with 2-7/8" Back DE	BK, RB, TB, WH	28 ga	10'	10	10	35



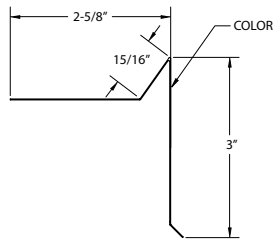
Can be used with F-Wave™ or Asphalt Shingles

**Gravel Stop**

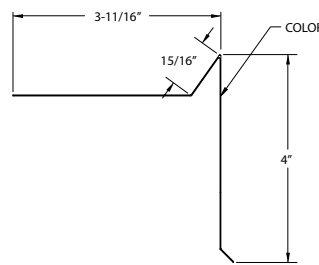
Part #	Description	Color	Nom. Gauge/ Thickness	Piece Length	Pieces/ Box	Boxes/ Pallet	Pieces/ Pallet
AGS30 - -	Alum. 3" Face Gravel Stop (H6F)	BK, RB, TB, WH	0.019	10'	25	20	500
AGS40 - -	Alum. 4" Face Gravel Stop (H7)	BK, RB, TB, WH	0.019	10'	25	20	500
AGS340 - -	Alum. 4" Face Gravel Stop (H7)	BK, RB, TB, WH	0.032	10'	25	20	500
GGGS30 - -	Galv. 3" Face Gravel Stop (H6F)	BK, RB, TB, WH	26 ga	10'	10	35	350
GGGS30ML	Galv. 3" Face Gravel Stop (H6F)	Mill	26 ga	10'	10	35	350
GGGS40 - -	Galv. 4" Face Gravel Stop (H7)	BK, RB, TB, WH	26 ga	10'	10	35	350
GGGS40ML	Galv. 4" Face Gravel Stop (H7)	Mill	26 ga	10'	10	35	350
GGGS644ML	Galv. 4 x 4 Face Gravel Stop	Mill	26 ga	10'	10	35	350



AGS30, GGS30



AGS40, GGS40

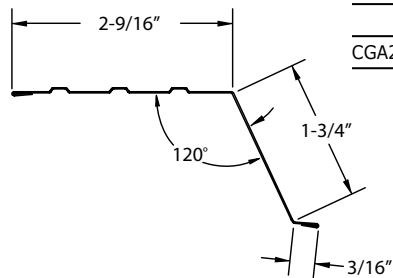


**Gutter Apron**

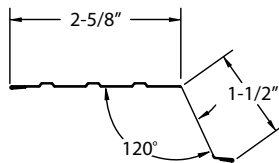
Part #	Description	Colors	Nom. Gauge/ Thickness	Piece Length	Pieces/ Box	Boxes/ Pallet	Pieces/ Pallet
AGA15 - -	Alum. 1-1/2" Face Gutter Apron	BK, RB, TB, WH	0.019	10'	50	32	1600
● AGA20 - -	Alum. 2" Face Gutter Apron	(Listed Below)	0.019	10'	50	32	1600
GGA15 - -	Galv. 1-1/2" Face Gutter Apron	BK, RB, TB, WH	28 ga	10'	25	32	600
GGA15ML	Galv. 1-1/2" Face Gutter Apron	Mill	28 ga	10'	25	32	600
GGA20 - -	Galv. 2" Face Gutter Apron	BK, RB, TB, WH	28 ga	10'	25	32	600
GGA20ML	Galv. 2" Face Gutter Apron	Mill	28 ga	10'	25	32	600
GGA2620 - -	Galv. 2" Face Gutter Apron	BK, NW, RB, TB, WH	26 ga	10'	25	32	600
CGA20	Copper 2" Face Gutter Apron	Copper	16 oz	10'	10		



AGA20, GGA20



AGA15, GGA15

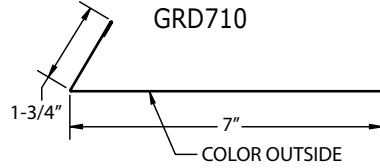
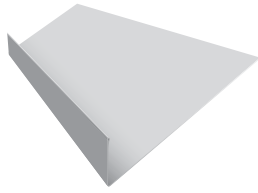


**Edge Metal Colors / ● =Color-Thru System™**

COLOR	CODE	COLOR	CODE	COLOR	CODE	COLOR	CODE	COLOR	CODE
● NX ALMOND	D49	● NX CHAMPAGNE	D53	● NX GRANITE	A19	● REDWOOD	RW	● SILVER GREY	SG
● ALMOND	AL	● CHARCOAL GREY	CG	● HARBOR GREY	HG	● NX RUSSET	B18	● NX TAN	D48
● BEAVER BROWN	BB	● CLASSIC CREAM	CC	● NX LINEN	W10	● ROYAL BROWN	RB	● TERRA BRONZE	TB
● BLACK	BK	● COUNTRY BLUE	CU	● LINEN	LI	● SAGE	SA	● VICTORIAN GREY	VG
● BRONZE	BZ	● DESERT SAND	DS	● MONTANA SUEDE	XMS	● NX SAND	D51	● WHITE	WH
● BROOKSTONE	BS	● NX DUNE	D54	● MUSKET BROWN	MB	● NX SAND STONE	D46	● WICKER	WI
● BUCKSKIN	BU	● EVEREST	EV	● NORWEGIAN WOOD	NW	● SANDTONE	ST		
● CAMEO	CA	● EVERGREEN	EG	● PEBBLESTONE CLAY	PC	● NX SIERRA CLAY	D47		

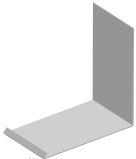
**Rain Diverter**

Part #	Description	Colors	Nom. Gauge/ Thickness	Piece Length	Pieces/ Box	Boxes/ Pallet	Pieces/ Pallet
GRD710 - -	Galv. 7" Rain Diverter	BK, RB, TB, WH	26 ga	10'	10	25	250
GRD710ML	Galv. 7" Rain Diverter	Mill	26 ga	10'	10	25	250



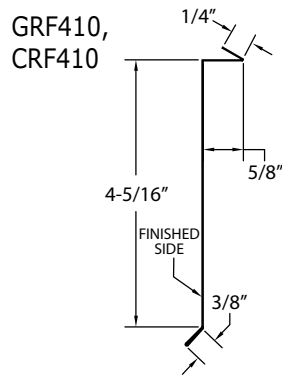
**J-Flashing**

Part #	Description	Colors	Nom. Gauge/ Thickness	Piece Length	Pieces/ Bundle	Pieces/ Pallet
GJF30655ML	Galv. 6 x 5-1/2 x 1/2 J-Flashing	Mill	30 ga	10'	20	500



**Reglet Flashing**

Part #	Description	Colors	Nom. Gauge/ Thickness	Piece Length	Pieces/ Box	Boxes/ Pallet	Pieces/ Pallet
GRF410 - -	Galv. 4" Reglet Flashing	AL, BK, RB, TB, WH	26 ga	10'	10	25	250
GRF410ML	Galv. 4" Reglet Flashing	Mill	26 ga	10'	10	25	250
CRF410	Copper 4" Reglet Flashing	Copper	16 oz	10'	10		

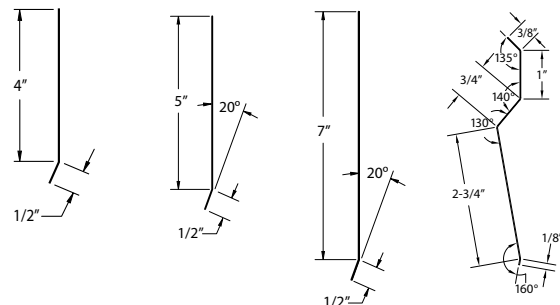


**Counter Flashing**

Part #	Description	Colors	Nom. Gauge/ Thickness	Piece Length	Pieces/ Box	Boxes/ Pallet	Pieces/ Pallet
GCFU645ML	Galv. 4 x 1/2" Counter Flashing Unit	Mill	26 ga	10'	25	40	1000
GCF510 - -	Galv. 5 x 10 Counter Flashing	BK, CG, HG, RB, WH	28 ga	10'	10	25	250
GCF510ML	Galv. 5 x 10 Counter Flashing	Mill	28 ga	10'	10	25	250
GCF710ML	Galv. 7 x 10 Counter Flashing	Mill	26 ga	10'	10	25	250
GLCF510 - -	Galv. 5" Ledge Colorado Flashing	CG, HG, RB, WH	28 ga	10'	10	25	250
GLCF510ML	Galv. 5" Ledge Colorado Flashing	Mill	28 ga	10'	10	25	250
GCF64BK	Galvanized 4" Counter Flashing	BK	26 ga	10'	10	25	250
GCF66BK	Galvanized 6" Counter Flashing	BK	26 ga	10'	10	25	250

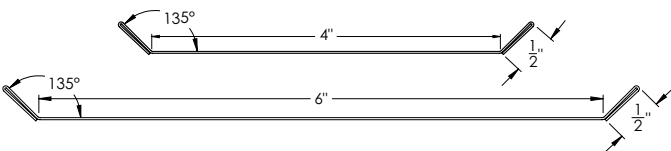


GCFU645ML    GCF510    GCF710    GLCF510



GCF64BK

GCF66BK



**Edge Metal Colors:**

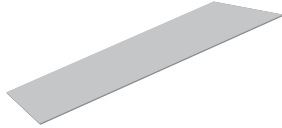
COLOR	CODE	COLOR	CODE	COLOR	CODE	COLOR	CODE
ALMOND	AL	CHARCOAL GREY	CG	ROYAL BROWN	RB	WHITE	WH
BLACK	BK	HARBOR GREY	HG	TERRA BRONZE	TB		

**T-Bar**



Part #	Description	Color	Nom. Gauge/ Thickness	Piece Length	Pieces/ Box
ATB10	Aluminum 10' T-Bar	Mill	0.050	10'	16

**Flat Sheet**



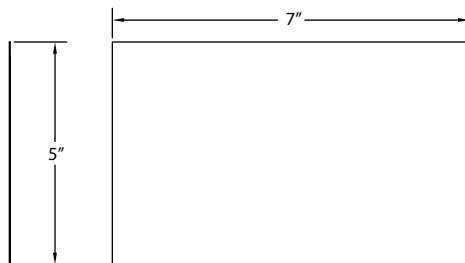
Part #	Description	Color	Nom. Gauge/ Thickness	Piece Length	Pieces/ Box
CFS2410	Copper 24" x 10' Flat Sheet	Copper	16 oz	10'	Order by the pc.
CFS3610	Copper 36" x 10' Flat Sheet	Copper	16 oz	10'	Order by the pc.

**Flat Shingle**

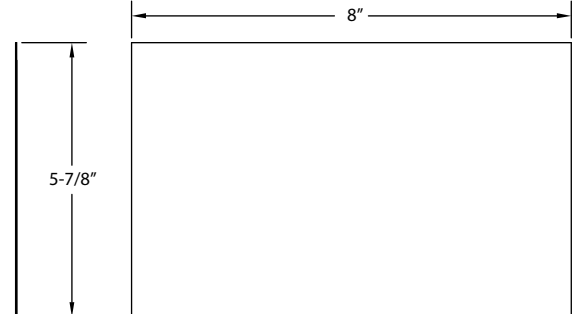


Part #	Description	Color	Nom. Gauge/ Thickness	Piece Length	Pieces/ Bundle	Pieces/ Box
ASF2885WH	Alum. 8 x 8 Flat Shingle	WH	0.024	8"	50	250
ASF57 - - - -	Alum. 5 x 7 Flat Shingle	BK/RB, TB/WH	0.011	7"	100	500
ASF57ML	Alum. 5 x 7 Flat Shingle	Mill	0.011	7"	100	500
ASF68 - - - -	Alum. 6 x 8 Flat Shingle	BK/RB, TB/WH	0.011	8"	100	500
ASF68ML	Alum. 6 x 8 Flat Shingle	Mill	0.011	8"	100	500
ASF710 - - - -	Alum. 7 x 10 Flat Shingle	BK/RB, TB/WH	0.011	10"	100	500
ASF710ML	Alum. 7 x 10 Flat Shingle	Mill	0.011	10"	100	500
ASF88 - - - -	Alum. 8 x 8 Flat Shingle	BK/RB, TB/WH	0.011	8"	100	500
ASF88ML	Alum. 8 x 8 Flat Shingle	Mill	0.011	8"	100	500
ASF810ML	Alum. 8 x 10 Flat Shingle	Mill	0.011	10"	100	500
GSF57ML	Galv. 5 x 7 Flat Shingle	Mill	30 ga	7"	100	
GSF68 - -	Galv. 6 x 8 Flat Shingle	BK, RB, TB	28 ga	8"	100	
GSF68ML	Galv. 6 x 8 Flat Shingle	Mill	28 ga	8"	100	
GSF88 - -	Galv. 8 x 8 Flat Shingle	BK, RB, TB, WH	28 ga	8"	100	
GSF88ML	Galv. 8 x 8 Flat Shingle	Mill	28 ga	8"	100	
GSF814 - -	Galv. 8 x 14 Flat Shingle	BK, RB, TB, WH	28 ga	14"	25	
GSF814ML	Galv. 8 x 14 Flat Shingle	Mill	28 ga	14"	25	
CSF57	Copper 5 x 7 Step Flashing	Copper	16 oz	7"	Order by the pc.	
CSF88	Copper 8 x 8 Step Flashing	Copper	16 oz	8"	Order by the pc.	
CSF814	Copper 8 x 14 Flat Shingle	Copper	16 oz	14"	Order by the pc.	

ASF57, GSF57, CSF57



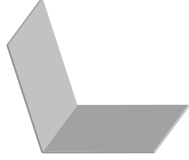
ASF68, GSF68



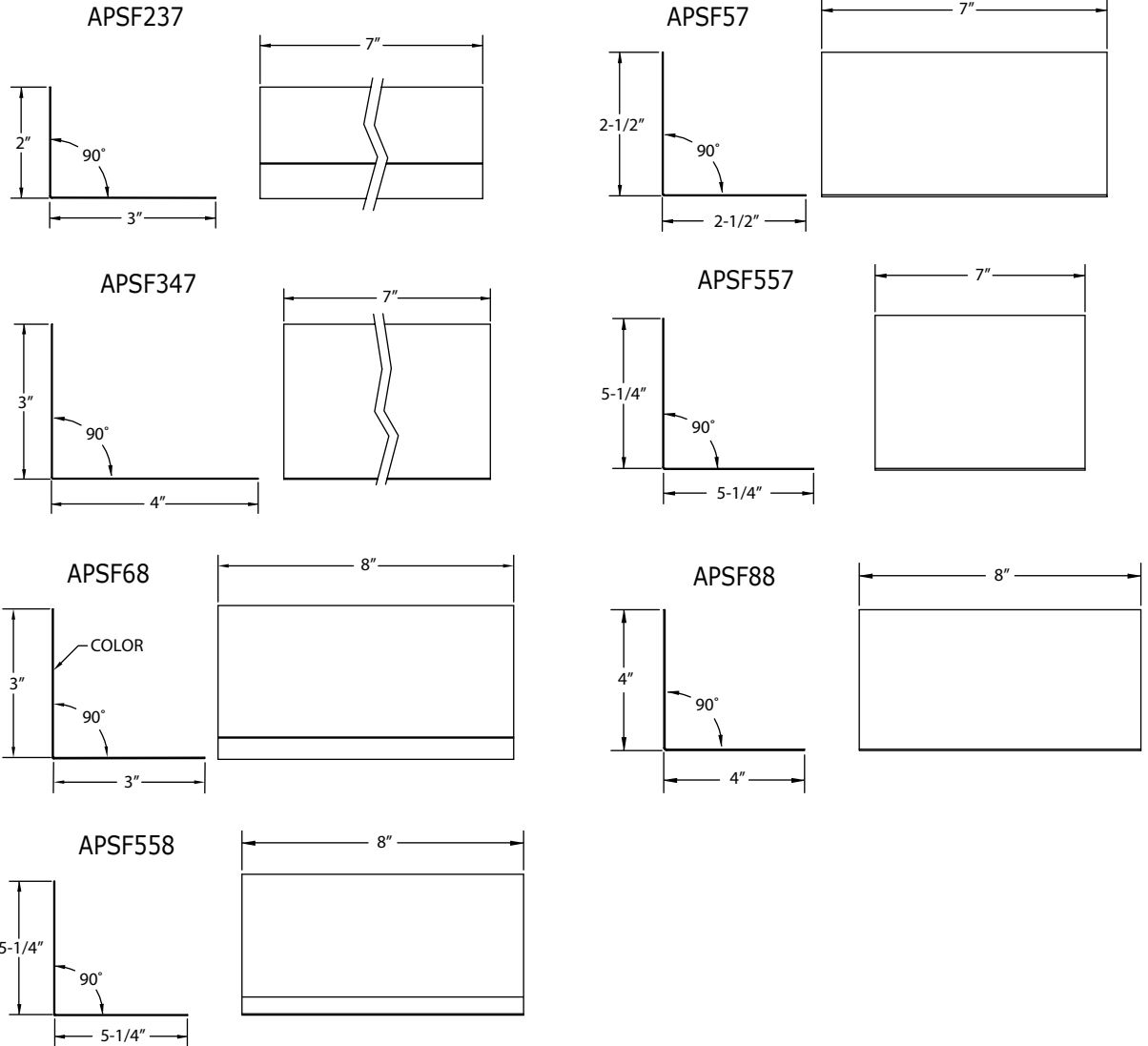
**Edge Metal Colors:**

COLOR	CODE	COLOR	CODE	COLOR	CODE	COLOR	CODE
BLACK	BK	ROYAL BROWN	RB	TERRA BRONZE	TB	WHITE	WH

**Pre-Bent Step Flashing**



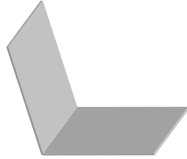
Part #	Description	Color	Nom. Gauge/ Thickness	Piece Length	Pieces/ Bundle	Pieces/ Box
APSF2885 - -	Alum. 4 x 4 x 8 PB Step Flashing	BK, RB, WH	0.024	8"	50	250
APSF237 - -	Alum. 2 x 3 x 7 PB Step Flashing	BK, RB	0.011	7"	100	500
APSF237ML	Alum. 2 x 3 x 7 PB Step Flashing	Mill	0.011	7"	100	500
APSF57 - -	Alum. 2-1/2 x 2-1/2 x 7 PB SF	BK, RB, TB, WH	0.011	7"	100	500
APSF57ML	Alum. 2-1/2 x 2-1/2 x 7 PB SF	Mill	0.011	7"	100	500
APSF347 - -	Alum. 3 x 4 x 7 PB Step Flashing	BK, RB, TB	0.011	7"	100	500
APSF347ML	Alum. 3 x 4 x 7 PB Step Flashing	Mill	0.011	7"	100	500
APSF557 - -	Alum. 5 x 5 x 7 PB Step Flashing	BK, RB, TB	0.011	7"	100	500
APSF557ML	Alum. 5 x 5 x 7 PB Step Flashing	Mill	0.011	7"	100	500
APSF68 - -	Alum. 3 x 3 x 8 PB Step Flashing	BK, RB	0.011	8"	100	500
APSF68ML	Alum. 3 x 3 x 8 PB Step Flashing	Mill	0.011	8"	100	500
APSF88 - -	Alum. 4 x 4 x 8 PB Step Flashing	BK, RB, TB, WH	0.011	8"	100	500
APSF88ML	Alum. 4 x 4 x 8 PB Step Flashing	Mill	0.011	8"	100	500
APSF5585 - -	Alum. 5 x 5 x 8 PB Step Flashing	BK, RB	0.011	8"	50	250
APSF5585ML	Alum. 5 x 5 x 8 PB Step Flashing	Mill	0.011	8"	50	250
APSF558 - -	Alum. 5 x 5 x 8 PB Step Flashing	BK, RB	0.011	8"	100	500
APSF558ML	Alum. 5 x 5 x 8 PB Step Flashing	Mill	0.011	8"	100	500



**Edge Metal Colors:**

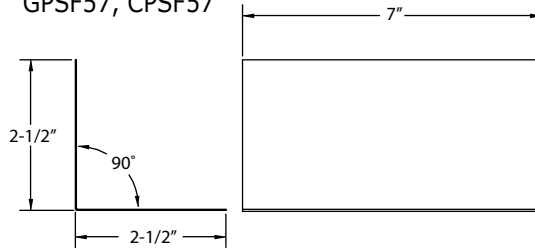
COLOR	CODE	COLOR	CODE	COLOR	CODE	COLOR	CODE
BLACK	BK	ROYAL BROWN	RB	TERRA BRONZE	TB	WHITE	WH

**Pre-Bent Step Flashing *cont.***

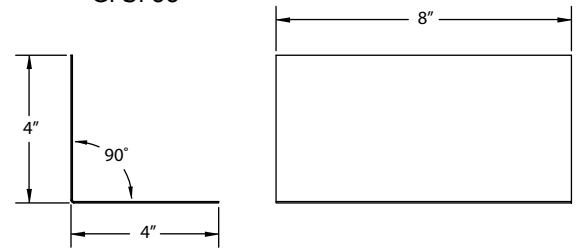


Part #	Description	Color	Nom. Gauge/ Thickness	Piece Length	Pieces/ Bundle
GPSF5512ML	Galv. 5 x 5 x 12 PB Step Flashing	Mill	30 ga	12"	100
GPSF57 - -	Galv. 2-1/2 x 2-1/2 x 7 PB Step Flashing	BK, RB, TB	28 ga	7"	100
GPSF57ML	Galv. 2-1/2 x 2-1/2 x 7 PB Step Flashing	Mill	28 ga	7"	100
GPSF88 - -	Galv. 4 x 4 x 8 PB Step Flashing	BK, RB, TB, WH	28 ga	8"	100
GPSF88ML	Galv. 4 x 4 x 8 PB Step Flashing	Mill	28 ga	8"	100
GPSF885 - -	Galv. 4 x 4 x 8 PB Step Flashing	BK, RB, TB	28 ga	8"	50
GPSF885ML	Galv. 4 x 4 x 8 PB Step Flashing	Mill	28 ga	8"	50
GPSF814 - -	Galv. 4 x 4 x 14 PB Step Flashing	BK, RB, TB, WH	28 ga	14"	25
GPSF814ML	Galv. 4 x 4 x 14 PB Step Flashing	Mill	28 ga	14"	25
GPSF914ML	Galv. 4-1/2 x 4-1/2 x 14 PB Step Flash.	Mill	28 ga	14"	25
<hr/>					
CPSF57	Copper 2-1/2 x 2-1/2 x 7 PB Step Flashing	Copper	16 oz	7"	100
CPSF88	Copper 4 x 4 x 8 PB Step Flashing	Copper	16 oz	8"	100
CPSF814	Copper 4 x 4 x 14 PB Step Flashing	Copper	16 oz	14"	25
CPSF914	Copper 4-1/2 x 4-1/2 x 14 PB Step Flashing	Copper	16 oz	14"	25

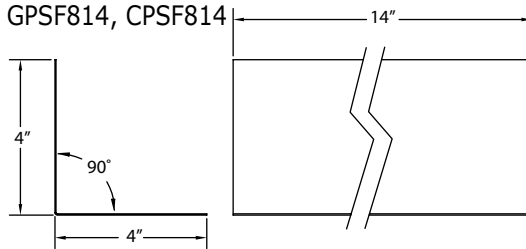
GPSF57, CPSF57



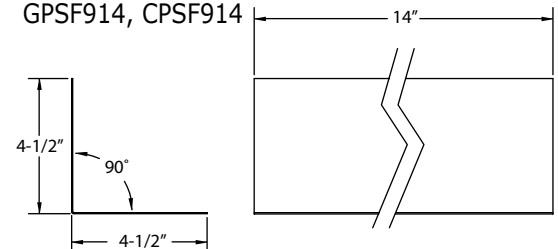
GPSF88



GPSF814, CPSF814



GPSF914, CPSF914



**Edge Metal Colors:**

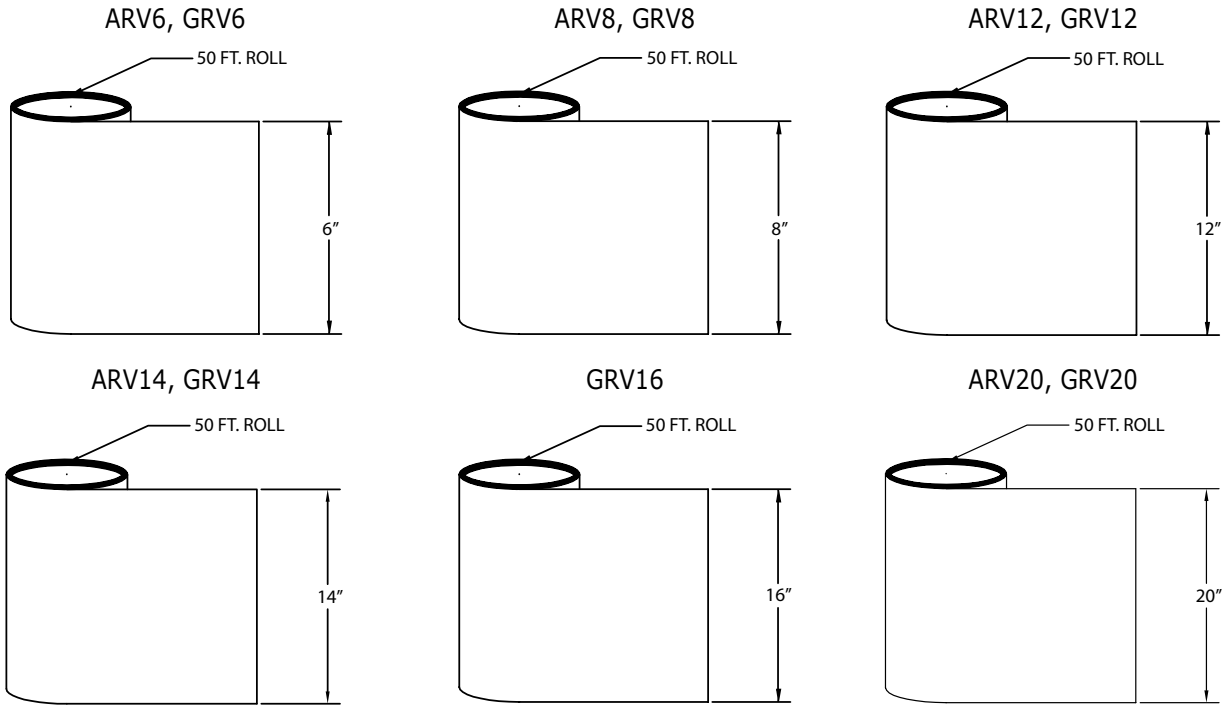
COLOR	CODE	COLOR	CODE	COLOR	CODE	COLOR	CODE
BLACK	BK	ROYAL BROWN	RB	TERRA BRONZE	TB	WHITE	WH



**Roll Valley**



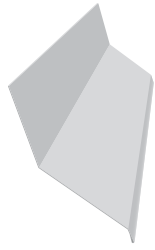
Part #	Description	Colors	Nom. Gauge/ Thickness	Piece Length	Pieces/ Box	Boxes/ Pallet	Pieces/ Pallet
ARV6ML	Alum. 6" Roll Valley	Mill	0.011	50'	1	25	25
ARV8ML	Alum. 8" Roll Valley	Mill	0.011	50'	1	25	25
ARV10ML	Alum. 10" Roll Valley	Mill	0.011	50'	1	25	25
ARV12ML	Alum. 12" Roll Valley	Mill	0.011	50'	1	25	25
ARV14ML	Alum. 14" Roll Valley	Mill	0.011	50'	1	25	25
ARV20ML	Alum. 20" Roll Valley	Mill	0.011	50'	1	25	25
GRV4ML	Galv. 4" Roll Valley	Mill	32 ga	50'	1	25	25
GRV6 - -	Galv. 6" Roll Valley	RB, TB	32 ga	50'	1	25	25
GRV6ML	Galv. 6" Roll Valley	Mill	32 ga	50'	1	25	25
GRV8 - -	Galv. 8" Roll Valley	RB, TB	32 ga	50'	1	25	25
GRV8ML	Galv. 8" Roll Valley	Mill	32 ga	50'	1	25	25
GRV10 - -	Galv. 10" Roll Valley	BK, RB, TB	32 ga	50'	1	25	25
GRV10ML	Galv. 10" Roll Valley	Mill	32 ga	50'	1	25	25
GRV102 - -	Galv. 10" Roll Valley	BK, TB	32 ga	25'	1	25	25
GRV12ML	Galv. 12" Roll Valley	Mill	32 ga	50'	1	25	25
GRV14ML	Galv. 14" Roll Valley	Mill	32 ga	50'	1	25	25
GRV16ML	Galv. 16" Roll Valley	Mill	32 ga	50'	1	25	25
GRV20 - -	Galv. 20" Roll Valley	BK, RB, TB	32 ga	50'	1	25	25
GRV20ML	Galv. 20" Roll Valley	Mill	32 ga	50'	1	25	25
GRV24ML	Galv. 24" Roll Valley	Mill	32 ga	50'	1	25	25
CRV112	Copper 12" Roll Valley 100# Roll	Copper	16 oz	100'	Order by the pc.		
CRV114	Copper 14" Roll Valley 100# Roll	Copper	16 oz	85'	Order by the pc.		
CRV116	Copper 16" Roll Valley 80# Roll	Copper	16 oz	60'	Order by the pc.		
CRV120	Copper 20" Roll Valley 100# Roll	Copper	16 oz	60'	Order by the pc.		
CRV124	Copper 24" Roll Valley 100# Roll	Copper	16 oz	50'	Order by the pc.		



**Edge Metal Colors:**

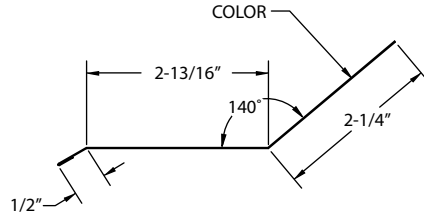
COLOR	CODE	COLOR	CODE	COLOR	CODE
BLACK	BK	ROYAL BROWN	RB	TERRA BRONZE	TB

**Roof to Wall Flashing**

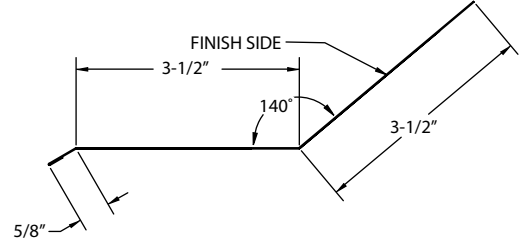


Part #	Description	Color	Nom. Gauge/ Thickness	Piece Length	Pieces/ Box	Boxes/ Pallet	Pieces/ Pallet
ARTW3310 --	Alum. 3 x 3 R/W Flashing	BK, RB, TB, WH	0.019	10'	25	25	625
ARTW4410 --	Alum. 4 x 4 R/W Flashing	BK, RB, TB, WH	0.019	10'	25	25	625
GRTW3310 --	Galv. 3 x 3 R/W Flashing	BK, RB, TB, WH	26 ga	10'	10	25	250
GRTW3310ML	Galv. 3 x 3 R/W Flashing	Mill	26 ga	10'	10	25	250
GRTW4410 --	Galv. 4 x 4 R/W Flashing	BK, RB, TB, WH	26 ga	10'	10	25	250
GRTW4410ML	Galv. 4 x 4 R/W Flashing	Mill	26 ga	10'	10	25	250
CRTW4410	Copper 4 x 4 R/W Flashing	Copper	16 oz	10'	Order by the pc.		

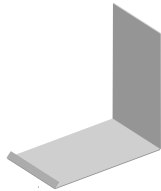
ARTW3310, GRTW3310



ARTW4410, GRTW4410, CRTW4410

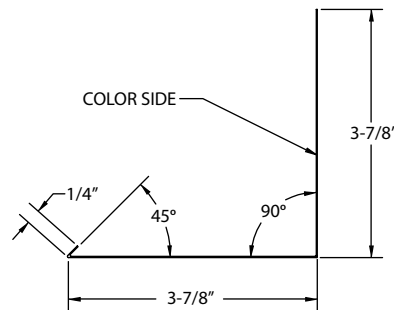


**Side Wall Flashing**

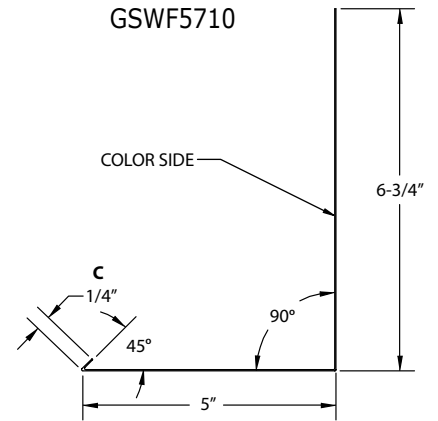


Part #	Description	Color	Nom. Gauge/ Thickness	Piece Length	Pieces/ Box	Boxes/ Pallet	Pieces/ Pallet
ASWF4410 --	Alum. 4 x 4 S/W Flashing	BK, RB, TB, WH	0.019	10'	10	14	140
GSWF4410 --	Galv. 4 x 4 S/W Flashing	RB, TB, WH	26 ga	10'	10	35	350
GSWF4410ML	Galv. 4 x 4 S/W Flashing	Mill	26 ga	10'	10	35	350
GSWF5710 --	Galv. 5 x 7 S/W Flashing	BK, WH	26 ga	10'	10	35	350

ASWF4410, GSWF4410



GSWF5710

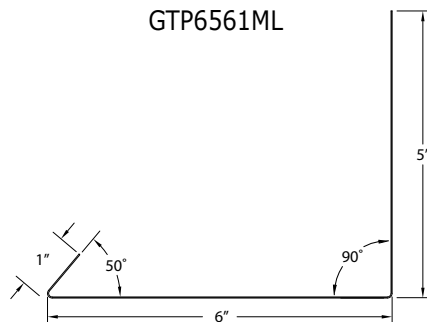


**Tile Pan Flashing**



Part #	Description	Color	Nom. Gauge/ Thickness	Piece Length	Pieces/ Box	Boxes/ Pallet	Pieces/ Pallet
GTP6561ML	Galv. 5 x 6 x 1 Tile Pan	Mill	26 ga	10'	10	35	350

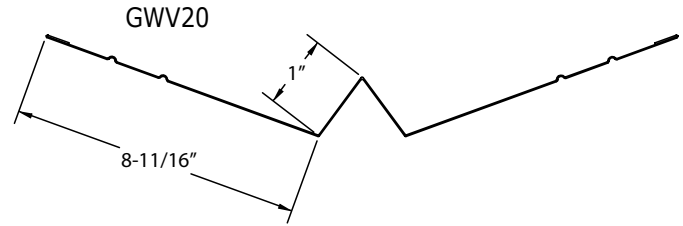
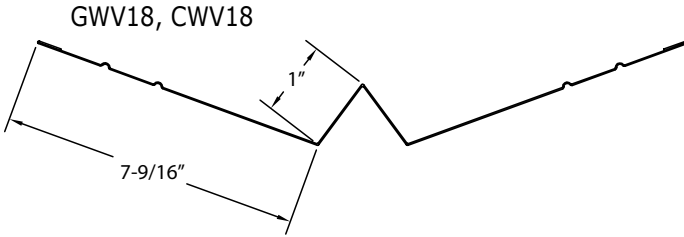
GTP6561ML



**W-Valley**



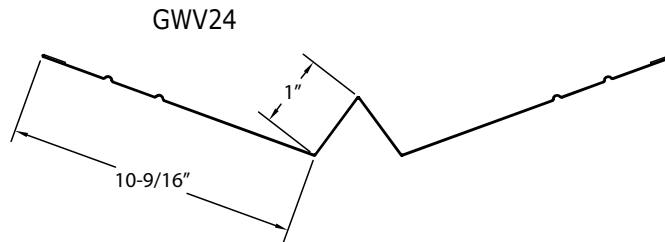
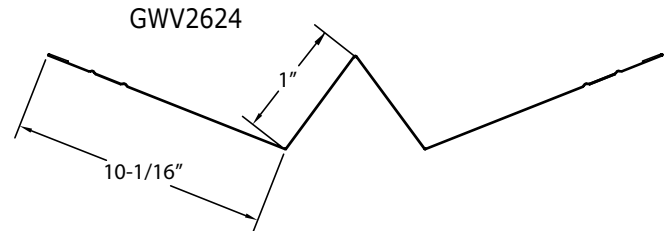
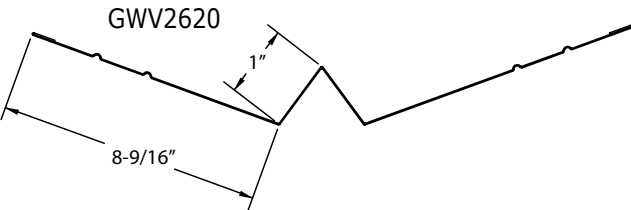
Part #	Description	Colors	Nom. Gauge/ Thickness	Piece Length	Pieces/ Box	Pieces/ Pallet
AWV24 - -	Alum. 24" W-Valley	BK, BZ, RB, TB	0.019	10'		100
AWV224 - -	Alum. 24" W-Valley	BK, RB, MB, WH	0.024	10'		100
GWV18 - -	Galv. 18" W-Valley	BK, RB, TB	30 ga	10'		100
GWV20 - -	Galv. 20" W-Valley	BK, RB, TB, WH	30 ga	10'		100
GWV20ML	Galv. 20" W-Valley	Mill	30 ga	10'		100
GWVA20 - -	Galv. 20" "A" W-Valley	BK, BR, TB	30 ga	10'	100	200
CWV18	Copper 18" W-Valley	Copper	16 oz	10'	10	100
CWV24	Copper 24" W-Valley	Copper	16 oz	10'	10	100



**W-Valley - Professional**



Part #	Description	Colors	Nom. Gauge/ Thickness	Piece Length	Pieces/ Pallet
GWV2620 - -	Galv. 20" Prof. W-Valley	BK, RB, TB	26 ga	10'	100
GWV2624 - -	Galv. 24" Prof. W-Valley	BK, RB, TB	26 ga	10'	100
GWV2624ML	Galv. 24" Prof. W-Valley	Mill	26 ga	10'	100
GWV2820 - -	Galv. 20" Prof. W-Valley	BK, RB, TB	28 ga	10'	100
GWV24 - -	Galv. 24" Prof. W-Valley	BK, RB, TB, WH	28 ga	10'	100
GWV24ML	Galv. 24" Prof. W-Valley	Mill	28 ga	10'	100



**Edge Metal Colors:**

COLOR	CODE	COLOR	CODE	COLOR	CODE	COLOR	CODE
BLACK	BK	ROYAL BROWN	RB	TERRA BRONZE	TB	WHITE	WH
BRONZE	BZ						



AMERICAN CONSTRUCTION METALS

## ALUMINUM LIMITED LIFETIME WARRANTY

## EDGE METAL PRODUCTS

American Construction Metals (ACM), manufactures Aluminum Edge Metal Products in accordance with high standards and tight quality controls. Products covered in this warranty include Drip Edge, W-Valleys, and other Roof Flashings. The aluminum products will not burn, support combustion, split, or crack due to cold weather.



LIMITED  
LIFETIME  
WARRANTY

**BUY ACM PRODUCTS WITH CONFIDENCE KNOWING THAT:**

- ACM Aluminum Edge Metal products carry a Limited Lifetime Warranty.
- Material and Labor is covered.
- Doesn't require registration.

**WHAT DOES THIS WARRANTY COVER?**

ACM warrants to the owner of the property at the time the products were installed, that the products were free from defects in material and workmanship in the course of manufacture, and that the finish on the products will not chip, peel, flake, or blister under conditions of ordinary wear. Products must be installed according to local building codes and industry specifications. This warranty excludes any areas of the material that are within 3/4" of any edge that has been cut subsequent to the application of the paint to the substrate. This warranty is limited to the terms and conditions, exclusions, limitations, requirements, and legal rights stated in this warranty.

**HOW LONG DOES THE COVERAGE LAST?**

If the property is individually owned, this Limited Lifetime Warranty lasts for the life of the property on which the products were originally applied for as long as the individual owns the property. If the property is not individually owned (e.g. corporation, condominium, cooperative housing arrangement, unincorporated association, school, church, government, or public entity, etc.), the warranty period will be 50-years from the date of original installation of the products on the property, prorated as outlined in the Warranty Coverage Schedule contained within. This Limited Lifetime Warranty is limited to the original owner. Coverage will be 100% for ten years after the installation and prorated after that period. See Warranty Coverage Schedule section for details of prorated coverage.

**WHAT WILL ACM DO?**

Property owner must notify the ACM Warranty Department in accordance with the notice requirements outlined below to validate the complaint. In the event the manufacturer is denied access for an inspection, this warranty is null and void. Upon the notification and validation, ACM will undertake the following: ACM will repair, repaint, replace, or refund the purchase price of the defective portion of ACM product that blisters, cracks, crazes, flakes, peels, or weathers unevenly due to a defect in the manufacturing process. ACM's obligations under this warranty will in no event exceed the purchase price of the originally installed products found to be warrantable in the original installation of such defective products. Any additional costs and expenses beyond these amounts are the property owner's responsibility. ACM will not pay or be responsible for any costs associated with or related to anything else affixed to the material or building's roof, including but not limited to solar panels, television antennas, moisture sensors, etc.

In the event of repair, replacement, or refinishing, the warranty will extend only for the time remaining under the original warranty. ACM will determine the reasonable labor costs to repair, repaint, or replace product under this warranty.

**WHAT IS NOT COVERED UNDER THE WARRANTY?**

This warranty does not cover damage of any kind resulting from:

- Uninstalled product that is stored in situations where standing water is covering the surface for a prolonged period of time.
- Faulty or improper installation, including "oil canning", waving, buckling, or other distortions. Flat roof or commercial applications require minimum of .050" aluminum material.
- Installation of ACM product in direct contact with dissimilar materials, salt spray, and cedar shake roofing.
- Cracking or crazing of the product's paint surface due to field forming of products in cold temperatures; or material that has bends less than 2T for a sheet thickness of 0.0299" and thinner and bends less than 4T for a sheet thickness of 0.0300" and thicker.
- Changes in surface color resulting from chalking, fading, soiling, tree sap, or staining. Exposure to the elements may cause these changes over time. The degree to which weathering occurs will vary depending on air quality, the building's location, and other local conditions over which ACM has no control.
- Accidental damage.
- Settlement.
- Structural shrinkage or distortion of the property structure.
- Fire.
- Lightning, hurricane, tornado, windstorm, earthquake, hail, ice damage or other acts of God.
- Issues stemming from ice damming and the common remedies including the use of ice rakes, salt or deicing chemicals, and high pressure steam spraying.
- Harmful chemicals including cleaning compounds, herbicides, and pesticides.
- Fumes, volcanic smog, or vapors within 30-miles of volcano.
- Surface deterioration due to air pollution, use for animal confinement structures, or within a mile of the seacoast and other bodies of saltwater.
- Misuse or abuse. Use of high pressure sprayer will void warranty.
- Vandalism.
- Airborne stains, mold and mildew accumulation.
- Tiger striping or atmospheric soil accumulation is a naturally occurring phenomenon that is not covered under the finish warranty.
- Failure of original property owners to provide reasonable and necessary maintenance of the products.
- Impact of foreign objects.
- Warping or distortion due to exposure to excessive heat sources.
- Products that have been painted, reinstalled, or whose surface has been altered in any manner will void the warranty.
- Any other causes beyond the reasonable control of ACM.

Continued on next page →

## ACM Customer Service

MW / NE - 877-279-5096

SE - 800-749-4067

SW - 800-357-7523

W - 877-213-5962



**STEEL LIMITED LIFETIME WARRANTY**  
**EDGE METAL PRODUCTS**

American Construction Metals (ACM), manufactures Steel Edge Metal Products in accordance with high standards and tight quality controls. Products covered in this warranty include Drip Edge, W-Valleys, and other Roof Flashings. The steel products will not burn, support combustion, split, or crack due to cold weather.



**BUY ACM PRODUCTS WITH CONFIDENCE KNOWING THAT:**

- ACM steel edge metal products carry a Limited Lifetime Warranty.
- Material and labor is covered.
- Doesn't require registration.

**WHAT DOES THIS WARRANTY COVER?**

ACM warrants to the owner of the property at the time the products were installed, that the products were free from defects in material and workmanship in the course of manufacture, and that the finish on the products will not chip, peel, flake, or blister under conditions of ordinary wear. Products must be installed according to local building codes and industry specifications. This warranty excludes any areas of the material that are within 3/4" of any edge that has been cut subsequent to the application of the paint to the substrate. This warranty is limited to the terms and conditions, exclusions, limitations, requirements, and legal rights stated in this warranty.

**HOW LONG DOES THE COVERAGE LAST?**

If the property is individually owned, this Limited Lifetime Warranty lasts for the life of the property on which the products were originally applied for as long as the individual owns the property. If the property is not individually owned (e.g. corporation, condominium, cooperative housing arrangement, unincorporated association, school, church, government, or public entity, etc.), the warranty period will be 50-years from the date of original installation of the products on the property, prorated as outlined in the Warranty Coverage Schedule contained within. This Limited Lifetime Warranty is limited to the original owner. Coverage will be 100% for ten years after the installation and prorated after that period. See Warranty Coverage Schedule section for details of prorated coverage.

**WHAT WILL ACM DO?**

Property owner must notify the ACM Warranty Department in accordance with the notice requirements outlined below to validate the complaint. In the event the manufacturer is denied access for an inspection, this warranty is null and void. Upon the notification and validation, ACM will undertake the following: ACM will repair, repaint, replace, or refund the purchase price of the defective portion of ACM product that blisters, cracks, crazes, flakes, peels, or weathers unevenly due to a defect in the manufacturing process. ACM's obligations under this warranty will in no event exceed the purchase price of the originally installed products found to be warrantable in the original installation of such defective products. Any additional costs and expenses beyond these amounts are the property owner's responsibility. ACM will not pay or be responsible for any costs associated with anything else affixed to the ACM product.

In the event of repair, replacement, or refinishing, the warranty will extend only for the time remaining under the original warranty. ACM will determine the reasonable labor costs to repair, repaint, or replace product under this warranty.

**WHAT IS NOT COVERED UNDER THE WARRANTY?**

This warranty does not cover damage of any kind resulting from:

- Uninstalled product that is stored in situations where standing water is covering the surface for a prolonged period of time.
- Faulty or improper installation, including "oil canning" waving, buckling, or other distortions. Flat roof applications require minimum of 24 ga. steel material.
- Installation of ACM product in direct contact with dissimilar materials, salt spray, and cedar shake roofing. Cracking or crazing of the product's paint surface due to field forming of products in cold temperatures; or material that has bends less than 2T for a sheet thickness of 0.0299" and thinner and bends less than 4T for a sheet thickness of 0.0300" and thicker.
- Changes in surface color resulting from chalking, fading, soiling, tree sap, or staining. Exposure to the elements may cause these changes over time. The degree to which weathering occurs will vary depending on air quality, the building's location, and other local conditions over which ACM has no control.
- Accidental damage.
- Settlement.
- Structural shrinkage or distortion of the property structure.
- Fire.
- Lightning, hurricane, tornado, windstorm, earthquake, hail, ice damage or other acts of God.
- Issues stemming from ice damming and the common remedies including the use of ice rakes, salt or deicing chemicals, and high pressure steam spraying.
- Harmful chemicals including cleaning compounds, herbicides, fertilizers, and pesticides.
- Fumes, volcanic smog, or vapors within 30-miles of volcano.
- Surface deterioration due to air pollution, use for animal confinement structures, or within a mile of a seacoast or other bodies of saltwater.
- Misuse or abuse. Use of high pressure sprayers voids warranty.
- Vandalism.
- Airborne stains, mold and mildew accumulation.
- Tiger striping or atmospheric soil accumulation is a naturally occurring phenomenon that is not covered under the finish warranty.
- Failure of original property owners to provide reasonable and necessary maintenance of the products.
- Impact of foreign objects.
- Warping or distortion due to exposure to excessive heat sources. Products that have been painted, reinstalled, or whose surface has been altered in any manner will void the warranty.
- Any other causes beyond the reasonable control of ACM.

Continued on next page →

**ACM Customer Service**

MW / NE - 877-279-5096

SE - 800-749-4067

SW - 800-357-7523

W - 877-213-5962

(Complete Steel Warranty available upon request)









# EDGE METALS



## **ACM is a "one stop shop" manufacturing system for your exterior metal products.**

ACM manufactures rainware, edge metals, trim coil, soffit and fascia, and siding accessories. We are constantly upgrading our plants and machinery to improve quality, add additional profiles, and create new innovative products.

## **Homeowners want consistent color matches for their soffit and fascia, rainware, edge metals, trim coil, and siding accessories.**

Some contractors buy gutter coil, soffit and fascia, edge metals, etc., from a wide variety of manufacturers and supply centers to get the lowest cost. The end result is that their components don't quite match and now it's permanently spoiled the appearance of the home.

Our **Color-Thru System™** has 24 colors to which you can match all parts of the house. You can use this system of colors to help you sell more jobs. The homeowner will see more value in your proposal if you can provide accurate color matches on all parts of the house.

## **Aluminum is made with majority of post consumer waste.**

Aluminum and steel are recyclable, aluminum even more so. Did you know that Aluminum can be recycled over and over again? 75% of all aluminum ever smelted is still being recycled.

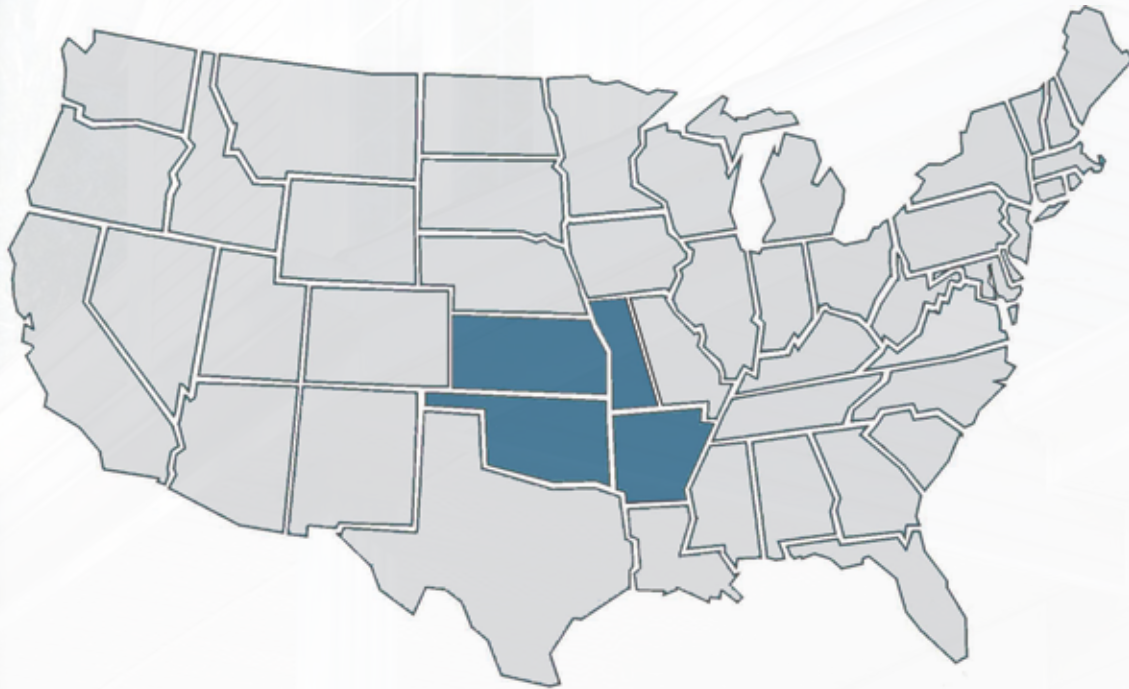
We keep Green Circle Certificates on hand for your access proving that 75% more of our raw material comes from recycled consumer waste. You may use this information to advertise that you are a "Green" company or as back-up documentation for government projects.

**For Customer Service: 877-279-5096**



# EDGE METALS

## Shawnee Plant Coverage Region



**Customer Service: Ph 877-279-5096 • Fax 608-365-0493**  
**[www.acm-metals.com](http://www.acm-metals.com)**